



Beaufort Memorial

Community Health Needs Assessment
September 2022

TABLE OF CONTENTS

EXECUTIVE SUMMARY.....	PAGE 3
Overview, Service Area, Demographics	
Health Status & System Responsiveness	
Concluding Comments	
Implementation Strategies	
2022 COMMUNITY HEALTH NEEDS ASSESSMENT.....	PAGE 6
Introduction	
Beaufort Memorial Hospital Service Area, Map 1	
2022-2025 IMPLEMENTATION STRATEGY	PAGE 7
Strategy 1	
Strategy 2	
Strategy 3	
Strategy 4	
DEMOGRAPHIC OVERVIEW.....	PAGE 10
Population, Tables 1-4	
Economics, Tables 5-6	
COMMUNITY & PUBLIC HEALTH INVOLVEMENT.....	PAGE 13
Community Input – Together for Beaufort County	
Human Services Alliance Organizational Chart, Figure 1, Table 7	
Community Input – SC Revenue and Fiscal Affairs Office	
BEAUFORT COUNTY PHYSICIAN RESOURCES.....	PAGE 16
Healthcare locations	
Summary	
SURVEY ASSESSMENT PROCESS & METHODOLOGY.....	PAGE 17
Community Health Needs Survey	
Table 8, Graph 1-2	
Survey Collection Methods	
Results, Table 9	
2019 COMMUNITY HEALTH NEEDS ASSESSMENT UPDATE.....	PAGE 22
Strategy 1	
Strategy 2	
Strategy 3	
COMMUNITY HEALTH RESOURCE INVENTORY.....	PAGE 34
Table 10	
Identification of Needs, BMH Involvement, & Resources Addressing Need, Table 11	
INFORMATION SOURCES.....	PAGE 50
CHNA CONTRIBUTORS.....	PAGE 51

List of Tables

TABLE 1	Population for Beaufort, Jasper & Hampton Counties	PAGE 11
TABLE 2	Race and Ethnicity in Beaufort County: 2013, 2017, 2021	PAGE 11
TABLE 3	Population by Age and Sex for Beaufort County: 2011-2015 and 2016-2020	PAGE 11
TABLE 4	Population by Age Category for Beaufort County and SC, 2020	PAGE 12
TABLE 5	Summary of Demographics & Economic Indicators	PAGE 13
TABLE 6	Selected Poverty Statistics for Beaufort County and SC	PAGE 13
TABLE 7	Together for Beaufort County Coalitions & BMH Membership	PAGE 15
TABLE 8	Community Health Needs Respondents by Zip Code	PAGE 18
TABLE 9	BMH Survey Prioritization of Health Needs	PAGE 21
TABLE 10	Community Health Resource Inventory	PAGE 34
TABLE 11	Identification of Needs, BMH Involvement, and Resources	PAGE 48



BEAUFORT MEMORIAL HOSPITAL

Our Mission:

To enhance the quality of life in the Lowcountry through improved health, innovative partnerships and superior care.

Executive Summary

Overview

Beaufort Memorial Hospital (BMH) is a 201 bed not-for-profit community hospital located in Beaufort, South Carolina and the largest hospital between Charleston, South Carolina and Savannah, Georgia. It is part of the economic, cultural, and recreational hub of a large, growing region that encompasses parts of the Georgia and South Carolina coasts. It is located 75 miles south of Charleston, South Carolina, 55 miles north of Savannah, Georgia, and 40 miles from Hilton Head Island, South Carolina.

The hospital, established as a quasi-governmental agency in May 1944 with 25 beds, was the first hospital in the area. Over time it has grown to encompass a medical staff of over 230 board-certified or board-eligible providers, an 18-bed inpatient psychiatric unit, a 14-bed acute inpatient rehabilitation unit, a Level 2 nursery, a 26 bed Emergency Department with 2 trauma rooms, and 2 full service cancer centers, Keyserling Cancer Center in Beaufort and New River Cancer Center in Okatie, offering chemotherapy, infusion/transfusion services and radiation therapy with the region's newest True Beam linear accelerator. Starting in July 2022 the Breast Care and Surgery Program began with the addition of a Breast Surgeon. Beaufort Memorial Hospital is accredited by the Joint Commission, and its cardiovascular and cancer services were developed in affiliation with Duke Medicine, which helped bring the latest technology and clinical trial involvement to the region's Lowcountry residents. Most recently, Beaufort Memorial Hospital was reaccredited as a Community Cancer Program by the American College of Surgeons Commission on Cancer. As of July 2016, BMH's clinical affiliation with Duke Medicine was discontinued with the initiation of a clinical affiliation agreement with the Medical University of South Carolina (MUSC) that includes clinical trials.

In addition to earning the Gold Seal of Approval from The Joint Commission for the Accreditation of Healthcare Organizations, we are proud to be recognized for quality and safety as demonstrated by:

- South Carolina Hospital Association Zero Harm Award
- The Joint Commission's Chest Pain Center Certification
- American College of Cardiology Heart Attack Platinum Performance Achievement Award
- American Heart Association's Mission: Lifeline STEMI and NSTEMI and Lifeline Trailblazer Award
- American Association of Cardiovascular and Pulmonary Rehabilitation Certification
- The Joint Commission's Primary Stroke Center Advanced Certification
- Stroke Gold Plus Quality Achievement Award
- American College of Surgeons Commission on Cancer Center Accreditation and Community Cancer Program for the Keyserling Cancer Center

- American College of Radiology Designated Lung Cancer Screening Center
- National Accreditation Program for Breast Cancer Centers
- The Joint Commission’s disease specific certification for total hip and knee replacements
- College of American Pathologists Laboratory Accreditation Program
- American College of Radiology Accreditation for: Breast MRI, CT, MRI, Mammography

Service Area

Based off Fiscal Year (FY) 2020 BMH patient demographic report by zip code, 83% of Beaufort Memorial Hospital’s patients reside in Beaufort County, and 77% of them predominantly in northern Beaufort County which includes thirteen zip codes contiguous to the hospital. Combined Hampton and Jasper Counties made up 14% of FY2020 patients. Facilities such as Beaufort Memorial Harrison Peeples Health Care Center and the Beaufort Memorial Okatie Medical Pavilion provide increased access to care for these locations. Patient origin data reflects the importance of BMH to its surrounding rural communities. The military has a significant presence in Beaufort County with the Marine Corps Recruit Depot, the Marine Corps Air Station, the Naval Hospital Beaufort and a significant veteran population. Care is also provided for military personnel from The Marine Corps Recruit Depot and the Marine Corps Air Station due to some downsizing of the Naval Hospital Beaufort. As a major tourist destination, vacationers and out-of-state residents are also a source of patients, with 1% of the FY2020 patient population residing outside of SC or GA.

Demographics

Beaufort County continues to be ranked as one of the healthiest counties in South Carolina. However, both its demographics and health status indicators are heavily influenced by affluent and healthy retirees that reside in Bluffton or Hilton Head, 25 miles south of the Broad River. Population projections suggest that Beaufort County experienced over 10% growth since 2015. Growth occurred across all minor civil divisions and most age categories. Geographically growth was greatest in Bluffton (58.7%); age-wise, it was in the 65 and older cohort, which continues to comprise over a quarter of the county’s population. Median household income rose among all areas (Beaufort, Bluffton, and Hilton Head). The percentage of families and people whose income in the past 12 months is below the poverty level decreased in all three geographic locations (Beaufort, Bluffton, Hilton Head) from 2015-2020. Lastly, there continues to be strong growth in the retirement age population.

Health Status and System Responsiveness

Statistically, Beaufort County ranks well on health outcomes when compared to other South Carolina counties. Overall, its residents report themselves as healthier and happier, and we achieved some of the national benchmarks in these indicators. Strides have been made in improving the percentages of women receiving adequate prenatal care and reducing infant mortality. Despite improvement in health disparities, the percentage of low-birth weight babies and infant mortality continue to be double or greater for African Americans.

Although Beaufort County has achieved top rankings in health outcomes and health factors and has a resident population that makes use of preventive health measures, there are very definitive areas of concern where intervention is needed to circumvent continued increases in morbidity and potential increases in mortality, especially from preventable causes. Prevention, early detection, and intervention, keystones of public health, will continue to be vital components of the health care system in order to achieve reductions in costs, morbidity, and mortality.

Over the decades, BMH has grown in its capacity and in the complement of services available to the community. Geographic expansion, physician recruitment and additions to service line offerings have been important additions to meeting the needs of a growing and aging population. As new technology and procedures have become safe and available, BMH has pursued these offerings, permitting its residents to obtain a more comprehensive level of care close to home and family. With substantial year or year growth south of the Broad River, particularly Bluffton, BMH has positioned themselves to expand services in this area in just the last 5 years. This included the opening of a medical office building in Okatie (northern Bluffton) with many hospital services including a cancer center, express care, primary care, lab, imaging, women's health, outpatient adult rehabilitation and more. A third express care location opened in southern Bluffton off of 278 and Burnt Church Rd to service Hilton Head and Bluffton residents. BMH acquired Palmetto Medical Group, a well-established primary care office also in Bluffton. There are currently 3 BMH primary care offices south of the Broad River.

Concluding Comments

The future adequacy of a cost-effective health care delivery system within the City of Beaufort and its immediate areas lies largely within the purview of Beaufort Memorial Hospital. With continued shifts in types of payers and reductions in reimbursement at both the Federal and State levels, and a constrained supply of primary care providers even with recent additions, keeping up with the exponential growth of Beaufort County coupled with an aging population, BMH will continue to see access challenges. The availability of telehealth, ongoing recruitment of providers, a new medical office building with a cancer center located mid-county, and the addition of a third express care clinic are all beneficial resources for residents of both Beaufort and Jasper Counties. In keeping with health care challenges, the strategies and implementation plan which evolved from this assessment process attempts to balance the community's identified priorities with endeavors that are fiscally sound and in keeping with BMH's strong stewardship within Beaufort County. The depth and breadth of BMH's involvement in community coalitions positions it well to continue to affect change at all levels. In a post COVID-19 public health centered society, BMH's leadership will continue to be called upon, and its position of importance as a resource to the Lowcountry's array of health and human service agencies will likely provide ample opportunities for BMH to fulfill its mission.

Implementation Strategies

The cost of health care, chronic disease and access/availability to healthcare services were the three areas identified as priorities by the Beaufort County, Jasper County and Hampton County communities in the 2022 Community Health Needs Assessment. The strategies identify the means through which the hospital plan to address needs that are consistent with the hospital's charitable mission, as part of its community benefit programs. The hospital anticipates health needs and resources may change, and thus a flexible approach was adopted in the development of its strategies.

The four strategies developed to address the priorities are:

Strategy 1: Beaufort Memorial Hospital will support current initiatives and promote new solutions to address health care costs.

Strategy 2: Beaufort Memorial Hospital will support innovative chronic disease management programs.

Strategy 3: Beaufort Memorial Hospital will expand and support mental health services in Beaufort County.

Strategy 4: Beaufort Memorial Hospital will continue to increase access to healthcare services.

2022 Community Health Needs Assessment

Introduction

Beaufort Memorial Hospital (BMH) is a 201-bed non-profit community hospital located in Beaufort, South Carolina and the largest hospital between Charleston, South Carolina and Savannah, Georgia. The hospital, established in May 1944 with 25 beds, was the first hospital in the area. Over time it has grown to encompass a medical staff of over 230 board-certified or board-eligible providers, an 18-bed inpatient psychiatric unit, a 14-bed acute inpatient rehabilitation unit, a Level 2 nursery, a 26 bed Emergency Department with 2 trauma rooms, and 2 full service cancer centers, Keyserling Cancer Center in Beaufort and New River Cancer Center in Okatie, offering chemotherapy, infusion/transfusion services and radiation therapy with the region's newest True Beam linear accelerator. Starting in July 2022 the Breast Care and Surgery Program began with the addition of a Breast Surgeon. Beaufort Memorial Hospital is accredited by the Joint Commission, and its cardiovascular and cancer services were developed in affiliation with Duke Medicine, which helped bring the latest technology and clinical trial involvement to the region's Lowcountry residents. Most recently, Beaufort Memorial Hospital was reaccredited as a Community Cancer Program by the American College of Surgeons Commission on Cancer. As of July 2016, BMH's clinical affiliation with Duke Medicine was discontinued with the initiation of a clinical affiliation agreement with the Medical University of South Carolina (MUSC) that includes clinical trials. In 2020, mid COVID-19 pandemic, BMH expanded hospital service lines south of the Broad River opening a medical office building in Okatie, a third express care clinic in Bluffton and acquiring an established Bluffton primary care clinic.

As with any Community Health Needs Assessment (CHNA), the characteristics of the population to be served provide the parameters for the complement of services that are needed to best meet the health and wellness requirements of the community. The cross-functional team, initially established by BMH to ensure that a broad spectrum of stakeholders was represented, continued to provide oversight for this 2022 CHNA update. The team included representatives from the hospital's LifeFit Community Health Department, the Beaufort County Health and Human Services Department, the hospital's Finance and Accounting Department and AccessHealth Lowcountry.

This assessment will review current sociodemographic data, pertinent public health statistics, and discuss the results of a widely dispersed survey that addressed the public's perception of the community's health needs. It will conclude with the identification of specific goals and strategies for BMH to undertake in ensuring it is responsive to the needs of its community.

Beaufort Memorial Hospital Service Area

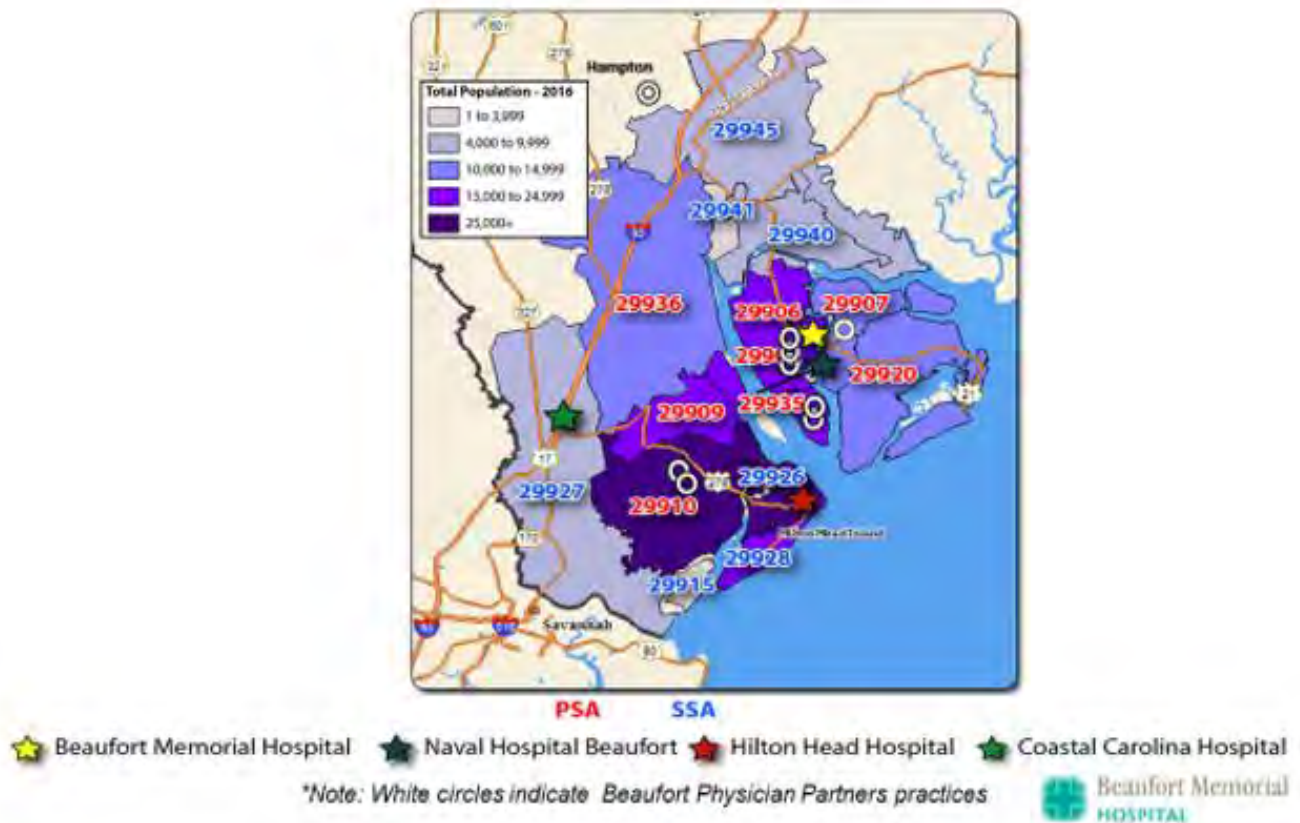
Beaufort Memorial Hospital's patients predominantly reside in Beaufort County, with smaller percentages coming from the outlying areas of Jasper and Hampton Counties. As a tourist destination, out-of-state residents are also a source of patients for BMH. During FY 2020, approximately 17.5% of BMH's inpatients were from outside of Beaufort County with approximately 1% outside of SC or GA. However, for the purposes of this document, focus will be on Beaufort County, where over 84% of BMH's patients reside.

As observed in the Beaufort Memorial Physician Network Service Area map below, most patients reside in the Primary Service Area (PSA) in Beaufort County which includes zip codes 29902, 29906, 29907, 29909, 29910, 29935 and 29936. Geographically these areas are the City of Beaufort, Burton, Lady's Island, Okatie, Bluffton, St. Helena Island, Town of Port Royal and Ridgeland in Jasper County. The Secondary Service Area (SSA) includes zip codes 29915, 29926, 29927, 29928, 29940, 29941, and 29945. These include Daufuskie Island, the population

dense areas of Hilton Head Island (29926-29928) and the rural area referred to as Sheldon Township (29940, 29941, and 29945).

Map 1: Beaufort Memorial Hospital Physician Network Service Area

Physician Network: Service Area Geographies



2022-2025 Implementation Strategy

Beaufort Memorial Hospital conducted a community health needs assessment in 2022. This implementation strategy with related implementation activities documents the efforts of the hospital to address and prioritize the community health needs identified in this 2022 CHNA.

The strategy identifies the means through which the hospital plans to address needs that are consistent with the hospital's mission as part of its community benefit program from 2022-2025.

Beyond the programs discussed in the strategy, the hospital is addressing many of these needs simply by providing care to all, regardless of ability to pay. Health needs and resources may change, so a flexible approach is proposed in the development of the strategy to address needs identified in this 2022 CHNA.

The CHNA strategy with action plans is organized according to identified priorities which are based on the responses of a diverse range of stakeholders to include patients, community members, hospital employees,

family advocates, clinicians and students as the most pressing community health needs. The intent of the strategy is to establish realistic expectations for what the hospital and partners can do to address the identified needs of the community.

Strategy 1:

Beaufort Memorial Hospital will support current initiatives and promote new solutions to address health care costs.

Implementation Activities:

- Continue to offer BMH financial assistance programs such as AccessHealth Lowcountry, MD Save, payment plans, discounts for upfront payments and hospital sponsored financial assistance for qualifying patients and services.
- Address two key social determinants of health in economic stability and access to healthcare by Identifying high risk/low income communities in Beaufort and Jasper Counties to provide free and low cost screenings off the mobile wellness unit.
- Promote and expand the Direct Primary Care clinic as a low cost primary care option for both insured and noninsured individuals.
- Continue to offer multiple levels of care for adults and children available to meet different healthcare needs at appropriate price points. Care options include primary care, urgent care, telemedicine and emergency care.

Strategy 2:

Beaufort Memorial Hospital will support innovative chronic disease management programs.

Implementation Activities:

- Expand Lifefit wellness services and cardiac/pulmonary rehabilitation offerings to south of the Broad River. Monitor and promote wellness center referrals.
- Expand medical nutrition therapy to more provider locations throughout Beaufort, Jasper and Hampton counties through in-person visits and telemedicine.
- Monitor and promote primary care referrals from the mobile wellness unit and Well at Work employer health events specifically for out of range or abnormal findings.
- Promote and track the utilization of the New River Cancer Center located in the Okatie medical office building.

- Expand low cost cardiovascular screenings to Okatie with no referral needed. Continue to promote screenings in Beaufort.
- Continue partnership with MUSC for the Sickle Cell Clinic and support sickle cell patients with transportation assistance and referrals to the clinic.

Strategy 3:

Beaufort Memorial Hospital will expand and support mental health services in Beaufort County.

Implementation Activities:

- Address a key social determinant of health in health care and health access by expanding outpatient mental health services south of the Broad River.
- Implement and provide trauma informed pediatric occupational therapy to children and their families who may be experiencing difficulties secondary to trauma or attachment disorders. Provide education to community partners/agencies and healthcare providers regarding the role and benefit of occupational therapy for this population.
- Continue to support and refer when necessary to the Collaborative Organization of Services for Youth/Adults COSY/COSA program as a partner of the Beaufort County Human Services Alliance.
- Address a key social determinant of health in social and community context through patient and family cancer support groups, Parkinson’s support group and a mental health contract with the Beaufort County Detention Center.

Strategy 4:

Beaufort Memorial Hospital will continue to increase access to healthcare services and education.

Implementation Activities:

- Continue to focus on provider recruitment for existing service lines and add new service lines such as Pulmonology, Endocrinology, Breast Surgery, Spine, Sports Medicine, Pediatric Urgent Care and Direct Primary Care.
- Increase the number of BMH patient transportation vehicles, expand service area and provide transportation for additional visit types.
- Expand the physical locations of easily accessible *BMH Care Anywhere* telemedicine kiosks and offer telemedicine services on the mobile wellness unit.

- Partnership with Amedysis to streamline and grow home health services. Transition orthopedic bridge patients to home health to better meet the need of post-operative care.
- Continue partnership with Marshview Community Organic Farms to address food insecurity in Beaufort County. Implement additional food distribution options and resources to the community through new and existing partnerships and grant opportunities.
- Address a key social determinant of health in education through the speaker's bureau providing experts in topics such as orthopedics, breast health, cancer, access to care and nutrition.

Community Health Needs Assessment Distribution Plan

The Beaufort Memorial Hospital Community Health Needs Assessment 2022 document will be posted on the hospital website at <https://www.bmhsc.org/about-us/community-health-needs-assessment> by September 30, 2022. Printed copies will be available upon request through the hospital's website or by contacting LifeFit Community Health at 843-522-5173.

Demographic Overview

Population

Beaufort is the second oldest city in South Carolina and is part of the economic, cultural, and recreational hub of the large, growing region that encompasses parts of the Georgia and South Carolina coasts. It is located 75 miles south of Charleston, SC, 55 miles north of Savannah, GA, and 40 miles from Hilton Head Island, SC. Beaufort County, comprised of 923 square miles of land and water, is among the fastest growing areas in the state. Currently, the U.S. Census Bureau estimates that 191,748 people reside in Beaufort County, a 14.53% increase in residents since the 2012. Population projections for Beaufort County over the next several years continue the upward trajectory observed in Table 1. While much smaller, a significant amount of growth was also seen in Jasper County (17.85%) since 2012. Hampton County, also within the BMH market area, has seen a 12.33% decrease in population.

As the population has increased, diversity has remained relatively unchanged. The data in Table 2 indicates that the greatest proportionate change in Beaufort County has been within the "two or more" race category. Note there have been improvements made by the US Census in how Hispanic origin and race questions are coded and need to be taken into account when comparing to previous census data.

Demand for health services will continue to be influenced by this population growth, as will the opportunities for expansion. Service configuration will likely be heavily influenced by the age and sex composition of the population, particularly by the aging of the population seen in Table 3 below. Dips in the 9 and under and 20-24 cohorts are overshadowed by the greater growth of those over 65. Significant double digit growth in the retirement aged and beyond with their expected higher utilization of healthcare services will be an important driver for service expansion.

Beaufort County's pre-school (under 5) and school-aged population (5-19) is comparable to the state's; its young adult to middle age population (20-44) is lower than the State's (27.3% compared to 31.7%), the adult

population (45-64) is similar, and in keeping with Beaufort’s popularity as a retirement community, the traditional “senior citizen” population, those over 65, is significantly higher (27.3% versus 17.7%). This burgeoning elderly population will be a key demographic driver for demand of healthcare services. Table 4 provides specific information on the number and percent of the County and State’s population for each of the age cohorts discussed above.

Table 1: Population for Beaufort, Hampton & Jasper Counties

<i>BMH Market Area Population Estimates as of July 1, 2021</i>											
	2012	2013	2014	2015	2016	2017	2018	2019	2020	2021	% Change 2012-2021
Beaufort County	167,415	170,962	175,040	179,796	183,184	186,497	188,876	192,122	187,691	191,748	14.53%
Hampton County	20,737	20,386	20,427	19,963	19,789	19,498	19,348	19,222	18,512	18,180	-12.33%
Jasper County	25,730	26,330	26,685	27,460	28,085	28,522	29,147	30,073	29,073	30,324	17.85%
Total	213,882	217,678	222,152	227,219	231,058	234,517	237,371	241,417	235,276	240,252	12.33%

Source: US Census Bureau Annual Estimates of the Resident Population for Counties in South Carolina: April 1 2010 to July 1, 2019 and April 1, 2020 to July 1, 2021.

Table 2: Race and Ethnicity in Beaufort County: 2013, 2017, And 2021

RACE/ETHNICITY	2013 Estimate	2017 Estimate	2021 Estimate
Black African American Alone	19.0%	19.5%	17.2%
White Alone	72.3%	75.5%	73.7%
Am. Indian/Alaskan Native Alone	0.4%	0.1%	0.3%
Asian Alone	0.9%	1.5%	1.2%
Native Hawaiian or Other Pacific Islander	0.0%	0.1%	0.1%
Two or More Races	2.1%	1.2%	3.5%

Source: U.S. Census Bureau American Community Survey 1-Year Estimates – Race 2013, 2017, 2021

Table 3: Population by Age and Sex for Beaufort County, 2011-2015 and 2016-2020

	2011-2015 Estimates	2016-2020 Estimates	Percent Change 2015-2020
Beaufort County			
Total population	171,420	189,732	10.7%
Male	49.3%	49.0%	-0.5%

Female	50.7%	51.0%	0.5%
Under 5 years	6.0%	5.2%	-13.8%
5 to 9 years	6.1%	4.7%	-23.2%
10 to 14 years	5.2%	5.7%	10.2%
15 to 19 years	5.7%	5.7%	0.2%
20 to 24 years	7.0%	3.6%	-49.3%
25 to 34 years	12.0%	11.2%	-6.7%
35 to 44 years	10.4%	10.0%	-4.1%
45 to 54 years	10.9%	10.5%	-4.1%
55 to 59 years	6.1%	6.7%	10.2%
60 to 64 years	7.2%	6.9%	-4.5%
65 to 74 years	14.5%	16.3%	12.5%
75 to 84 years	6.6%	8.5%	28.2%
85 years and over	2.3%	2.4%	6.0%

Source: U.S. Census Bureau ACS 5-Year estimates Comparison Profiles

Table 4: Population by Age Category for Beaufort County and South Carolina, 2020

Age Group	Beaufort County		South Carolina	
	No.	Percent	No.	Percent
Under 5 years	9,809	5.2%	291,651	5.7%
5-19 years	30,592	16.1%	956,558	18.8%
20-44 years	52,081	27.3%	1,617,677	31.7%
45 to 64 years	45,629	24%	1,324,935	25.9%
65+ years	51,621	27.3%	900,696	17.7%

Source: U.S. Census Bureau ACS 5-Year Estimates Subject Tables – Age and Sex 2020

Economics

Beaufort County is consistently rated as one of the most desirable places to live within South Carolina and receives accolades from national publications (e.g. *Southern Living*, *Architectural Digest*, *American Style*, *Coastal Living*, etc.). It ranks among the highest counties in both economic and public health indicators. But, the presence of a significant number of affluent retirement communities masks the economic disparities that can be found in the area. Nothing quite exemplifies this as the contrast in median housing costs between Beaufort County, its minor civil divisions, and South Carolina. South Carolina had a 2020 median home value of \$170,100, and median household income of \$54,864, Beaufort County had a 2020 median home value of \$309,600 and median household income considerably higher at \$71,430. The Beaufort County median household income is heavily weighted by the affluent areas of Hilton Head Island and Bluffton with median household incomes of \$86,171 and \$85,844, respectively. Table 5 displays the 2020 estimates of these demographic and economic indicators.

If we were to look only at the City of Beaufort’s and the Town of Port Royal’s demographics, which are two of the four areas that compose BMH’s primary service area, a slightly different picture emerges. The City experienced a 4.5% increase in population between 2015 and 2020 but also experienced a large 31.7% decrease in the number of persons living in poverty (12.7% vs. 18.6%). Port Royal experienced a 15.2% increase in population as well as a drastic 68.2% decrease in the number of persons living in poverty. The City of Beaufort has a significantly higher percent of families living in poverty compared to surrounding zip codes in Beaufort County. Table 5 displays the changes in these indicators since the 2015 census.

The median value on an owner-occupied housing unit in Bluffton has increased by 40.9% since 2015 and median household income rose by 23.3% making Bluffton less affordable since 2015. Only 2.8% of Bluffton families live in poverty, and its median gross rent of \$1,761 is the highest of all areas within Beaufort County (see Table 5). When compared to Northern Beaufort County, these individual contrasts to the aggregate data are particularly important to BMH, since the City of Beaufort (12.7% families in poverty) and the Town of Port Royal (3.4% poverty) are the top two sources of inpatients for the hospital.

Table 6 provides more specific information about the growing level of poverty among children and families in Beaufort County. Beaufort County trends slightly below the statewide poverty rates. While the percent of children in poverty has decreased, the percent of persons in poverty as a whole in Beaufort County has also decreased since 2015. Disadvantages that are proven to come with living in poverty include greater infant mortality, lower birth weight, lack of early childhood care, inadequate housing, inadequate healthy food, and eventually lower scores on math and reading tests.

Table 5: Summary of Demographic and Economic Indicators for Beaufort County & Minor Civil Divisions, 2020

Census Data Item	South Carolina	Beaufort County	City of Beaufort	Port Royal	Hilton Head	Bluffton
Population Change 2015-2020	6.6%	10.7%	4.5%	15.2%	2.4%	58.7%
% persons 25+ High School Graduates or higher	88.3%	93.4%	93.9%	95.4%	93.4%	96.8%
% persons 25+ with Bachelor's or higher	29%	42%	35.1%	37.1%	53.9%	46.3%
Median value of owner-occupied housing unit	\$170,100	\$309,600	\$229,600	\$242,700	\$488,000	\$299,700
Median Gross Rent	\$918	\$1,229	\$941	\$1,293	\$1,330	\$1,761
Median Household income	\$54,864	\$71,430	\$54,061	\$59,081	\$86,171	\$85,844
All families in poverty	10.5%	6.9%	12.7%	3.4%	4.3%	2.8%

Source: U.S. Census Bureau 2020: ACS 5-Year Estimates Comparison Profiles: Comparative Economic Characteristics, Comparative Social Characteristics, Comparative Demographic Estimates, Comparative Housing Characteristics

Table 6: Selected Poverty Statistics for Beaufort County & South Carolina, 2017

Percent Below Poverty Level	Beaufort County		South Carolina
	2015	2020	2020
Children (People Under 18)	21.2%	15.6%	21.2%
Persons in Poverty, Percent	12.8%	9.3%	14.7%

Source: U.S. Census Bureau ACS 5-Year Estimates Comparison Profiles: Comparative Economic Characteristics 2011-2015 and 2016-2020

Community & Public Health Involvement

Beaufort Memorial Hospital is fortunate to be located within a county that has a robust configuration of health and human services agencies with a lengthy history of interagency collaboration. BMH and its employees have a track-record of providing technical support and leadership to innumerable organizations. One of the hospital's major commitments has been the participation in the Together for Beaufort County initiative, with employees participating on 5 of the coalitions. The hospital was one of the original partners/funders of this initiative. A historical overview and description of this important public-private partnership follows.

Community Input - Together for Beaufort County

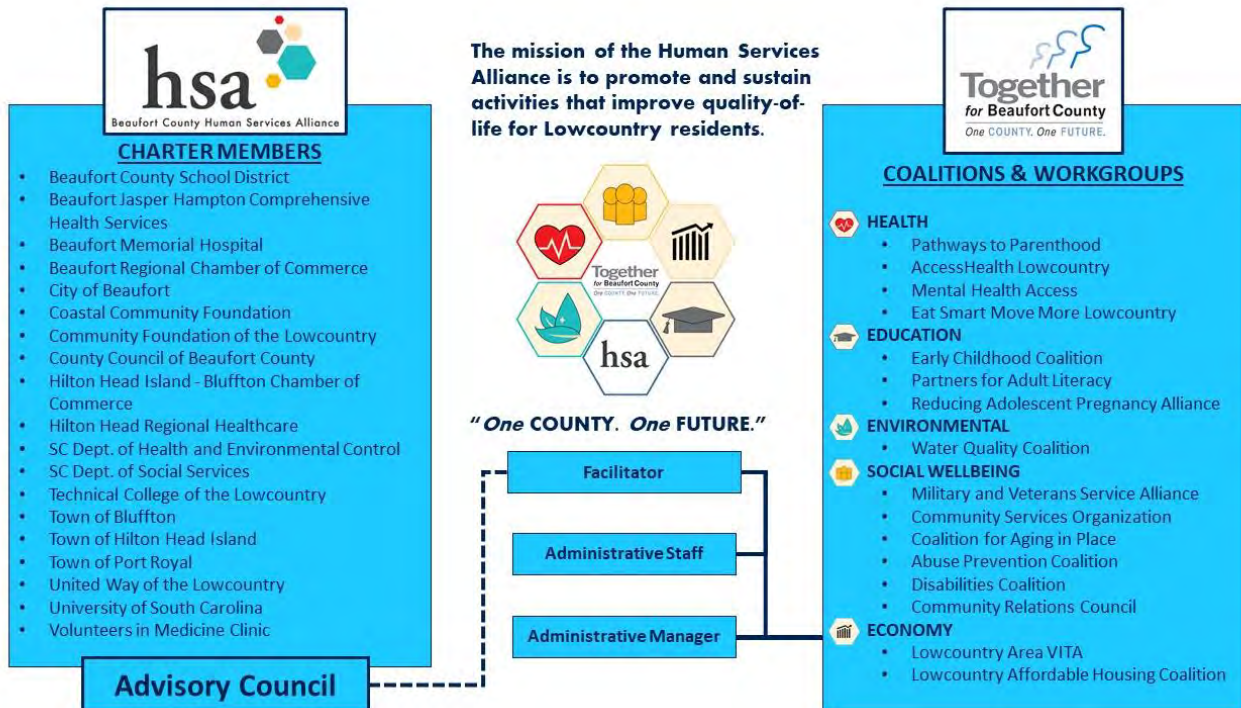
In 2004 a group of Beaufort County leaders introduced a community indicators project called "Together for Beaufort County" (T4BC). This initiative is sponsored by the Beaufort County Human Services Alliance, a department of Beaufort County Administration, and is an initiative that allows all Beaufort County residents to work together to improve the County's quality-of-life. The Alliance initially engaged a consultant to develop a series of indicators that would permit the monitoring of progress as the identified issues were addressed.

Operational definitions of four strategic goals, each with four complementary objectives, and baseline data for measurement of the objectives were delineated. The four strategic goals were:

- **Strategic Goal One:** *Together we will, with our Lowcountry neighbors, build an economy that supports a sustainable quality-of-life.*
- **Strategic Goal Two:** *Together we will break the cycle of illiteracy by exceeding national education standards.*
- **Strategic Goal Three:** *We will break the cycles of poverty that impact children, elderly and the working poor.*
- **Strategic Goal Four:** *Together we will balance growth in a manner that promotes and protects the health of our residents.*

These original strategic goals have evolved into five categories of focus: Health, Social Wellbeing, Economy, Environment and Education. Figure 1 displays these five categories and the associated coalitions.

Figure 1: Human Services Alliance Organizational Chart



The sharing of this information established a common ground for public, private, and nonprofit leaders to engage the public in a dialogue about how to work together to address these and other related issues. Additionally, it fostered collaborations among public, private, nonprofit and faith organizations to address gaps in services, build efficiencies, gain understanding, and address the collective responsibilities to the community shared by the human service sector.

A 2009 Interim Report highlighted the actions taken by local community groups to improve Beaufort County’s quality-of-life. In 2011, the Alliance contracted with University of South Carolina Beaufort to evaluate the progress made toward achieving the original T4BC quality-of-life objectives and present the findings at a series of public forums. In 2013 the Poverty Category was changed to Social Well Being. To date the coalitions continue to address quality of life indicators in Beaufort County. Goals 2 and 3 are most closely interrelated to BMH’s mission as a not-for-profit, community-based hospital. Table 7 displays the hospital’s representation (2019-2022) on the T4BC coalitions.

Table 7: Together for Beaufort County Coalitions & BMH Membership (2019-2022)

Category of Initiatives	BMH Membership
GOAL 1: Environment Water Quality Coalition	
GOAL 2: Health	
Pathways to Parenthood (formerly Adequacy of Prenatal Care)	X
Access Health Lowcountry Coalition (for the uninsured)	X
Mental Health Access Coalition	X
East Smart Move More Lowcountry	X
GOAL 3: SOCIAL WELL BEING	
Military and Veterans Services Alliance	
Community Services Organization	X
Coalition for Aging in Place	
Abuse Prevention Coalition	
Disabilities Coalition	
Community Relations Council	
GOAL 4: ECONOMY	
Lowcountry Area VITA Coalition (Income tax preparation assistance)	X (Hospital promotes)
Lowcountry Affordable Housing Coalition	
GOAL 5: EDUCATION	
Early Childhood Coalition	
Partners for Adult Literacy	
Reducing Adolescent Pregnancy Alliance	

Source: Beaufort Memorial Hospital (2022)

Community Input – SC Revenue and Fiscal Affairs Office

A community’s health is traditionally measured by an assortment of health status indicators, particularly morbidity and mortality data. In general, Beaufort County ranks among the healthiest of South Carolina’s counties. Among the state’s 46 counties, as listed in the 2022 *County Health Rankings: National Findings Report*, Beaufort County ranked 1st in health outcomes and health outcomes. It also ranked 1st in many health factors, a summary ranking that was based on health behaviors (tobacco use, diet and exercise, alcohol and drug use, sexual activity), clinical care (access to care, quality of care), social and economic (education, employment,

income, family and social support, and community safety. Beaufort County's percentage was above state average in excessive drinking and slightly higher in uninsured residents.

Beaufort County is currently ranked as the healthiest county in South Carolina. However, just as aspects of the demographical information were influenced by the more affluent areas, such is the case with morbidity and mortality data. Additionally, this "healthy" ranking must be tempered by South Carolina's national ranking as 11th highest adult rate in obesity, 36th in smoking, 5th in prevalence of diabetes, 8th in high blood pressure, 37th in cancer deaths and 36th in cardiovascular deaths.

Sources: *State of Childhood Obesity – Adult Obesity rates 2020*, www.stateofobesity.org (2021).

Beaufort County Physician Resources

Beaufort County has three distinct medical communities, with the location of practices conforming to the respective hospital service areas of Beaufort Memorial Hospital, Coastal Carolina Hospital, and Hilton Head Regional Medical Center. Hilton Head Hospital and Coastal Carolina Hospital are both owned and operated by Tenet Healthcare. Locations are outlined below. It is important to note the locations below are physical locations that many house multiple service lines.

Tenet Healthcare Locations

Coastal Carolina Hospital – 1000 Medical Center Dr Hardeeville, SC 29927
Hilton Head Hospital – 25 Hospital Center Blvd Hilton Head Island, SC 29926
Bluffton Medical Campus – 75 Baylor Dr Bluffton, SC 29910
Bluffton Okatie Outpatient Center – 40 Okatie Center Blvd S Okatie, SC 29909
Tidewatch Free-Standing Emergency Department – 349 Tidewatch Dr W Bluffton, SC 29910
Wound Healing Center – Bluffton Medical Campus – 75 Baylor Dr Suite 190 Bluffton, SC 29910

Beaufort Memorial Hospital Locations

Beaufort Memorial Hospital – 955 Ribaut Rd Beaufort, SC 29902
AccessHealth Lowcountry – 954 Ribaut Rd Beaufort, SC 29902
Beaufort Medical Plaza – 989 Ribaut Rd Beaufort, SC 29902
Beaufort Memorial Medical and Administrative Center – 990 Ribaut Rd Beaufort, SC 29902
Beaufort Memorial Surgery Center – 1033 Ribaut Rd Beaufort, SC 29902
Beaufort Memorial Port Royal Medical Pavilion – 1680 Ribaut Rd Port Royal, SC 29935
Beaufort Memorial Lowcountry Medical Group – 300 Midtown Dr Beaufort, SC 29906
Beaufort Memorial Lady's Island Internal Medicine – 117 Sea Island Parkway Lady's Island, SC 29907
Beaufort Memorial Okatie Medical Pavilion – 122 Okatie Center Blvd N Okatie, SC 29909
Beaufort Memorial May River Medical Pavilion – 1 Burnt Church Rd Bluffton, SC 29910
Beaufort Memorial Palmetto Medical Group – 4818 Bluffton Parkway Bluffton, SC 29910
Beaufort Memorial HealthLink for Children Bluffton – 31 Innovation Dr Bluffton, SC 29910
Beaufort Memorial Harrison Peebles Health Care Center – 100 W Pine St Varnville, SC 29944

Over the past several years, Beaufort Memorial has aggressively recruited physicians, particularly in primary care. Growth south of the Broad River for Beaufort Memorial has been a highlight for increased access to healthcare services. The opening of the Okatie Medical Pavilion in 2020 provided multi-specialty access and a continued partnership with MUSC. With the projected population growth discussed in the demographics section of the report, BMH will be confronted with continued demand for primary care services and specialties best suited for the treatment of chronic disease and a growing geriatric population.

Summary

Although Beaufort County has achieved top rankings in health outcomes and health factors and has a resident population that makes use of preventive health measures, there are very definitive areas of concern where intervention is needed to circumvent future increases in morbidity and mortality, especially from preventable causes. Excessive weight has been identified as a causal factor in the development of heart disease, diabetes, hypertension, and stroke.

The number of uninsured residents has also been identified as a variable that is impacting the health and wellness of Beaufort County. With the implementation of BMH Care Anywhere telemedicine services, three express care locations, addition of primary care offices, and a direct primary care clinic the intent is to decrease rates of Emergency Department utilization for hypertension, heart disease, and stroke. Educating the community on these available resources outside of the Emergency Department will be a continued challenge as there continues to be a high rate of chronic disease amongst our community.

Survey Assessment Process & Methodology

The quantitative analysis identified several areas of emphasis for Beaufort Memorial Hospital's community wellness programming. Although the precision of vital statistic data can provide impartial guidance for the hospital's resources, it is also essential to understand and be responsive to the community's perception of what they believe are the major health needs.

Community Health Needs Survey

In keeping with BMH's commitment to improve community health and promote wellness, a survey was conducted to gather information about the community's perception of the major health problems and unhealthy behaviors in Beaufort County. The survey was conducted through Survey Monkey. Surveys were administered January-June 2022. Survey responses totaled 1,320. Respondents represented 36 zip codes. Of the total 1,320 surveys received, there were 1,173 respondents who entered a zip code.

The survey was promoted via the Beaufort Memorial Hospital (BMH) website and the hospital's Facebook page, through the BMH COVID-19 updates mailing list and to various community groups. Other sites for electronic administration included distribution to all BMH employees, to Well at Work employers, AccessHealth of the Lowcountry, Good Neighbor Health Clinic, City of Beaufort employees, Town of Bluffton employees, University of SC Beaufort students and staff, Beaufort Jasper Hampton Comprehensive Health Services, BMH mobile wellness, Jasper County Government, Beaufort County School District, and BMH physician practices.

Thirteen hundred and twenty (n=1,320) individuals completed the survey online. The majority of respondents reported residing in BMH's primary and secondary service areas. Of the 1,320 respondents 1,173 respondents chose to enter a zip code. Table 8 displays the survey results by zip code.

The 1,173 zip code responses shown below in Table 8 are residents of the direct marketing area of Beaufort Memorial Hospital. The remainder of the surveys were completed by persons who lived in tertiary areas and beyond, including other locations in Hampton County, SC, and Georgia.

Of the 1,320 responses to the survey, respondents were predominantly female (73.12%) and over age 55 (78.28%). Racial make-up included 88.9 % white, 7.61% black, 0.85% Asian/Pacific Islander, 1.63% Hispanic

American, and 0.93% Hispanic or Latino. A significant number had a college degree (32.98%) or graduate degree (33.66%). Income wise, 1,305 of those completing this question on the survey provided information on household income: 13.79% had household income under \$50,000, 32.19% were between \$50,000-\$99,999, and 31.03% over \$100,000, 22.99% chose not to answer. In terms of paying for health care, 1.12% indicated that they are unable to pay for healthcare, 57.54% had Medicare or Medicaid, 8.57% pay with cash, 0.53% apply for financial assistance, and the remainder 71.64% were insured.

The survey also inquired about the 5 most significant “health problems” in their community. As seen in Graph 1 on page 19, the cost of healthcare and the ability to pay for healthcare were the most frequently cited problems among respondents, with 66.06% and 64.01%, respectively, of those completing the survey indicating these as a significant health problems. The similarity in top health problems can be attributed to the multiple check off nature of the question. Prescription medication too expensive (55.63%), lack of health insurance (41.99%), obesity in adults (41.82%), cancer (33.03%), mental health (32.95%), drug abuse-illegal substances (28.10%), Obesity in children and teenagers (26.05%) and lack of transportation to healthcare services (25.88%) are the other top health problems identified by the survey responses. There was also an “Other” option available to respondents to write-in any health problems they would like to address that were not on the list provided. 145 respondents took advantage of this option and of the 145 responses, 72% reported some variation of availability/access to healthcare services. A follow up question from the survey inquired about medical services most needed in their community. Two stand-outs from this question were 69.08% responses for Adult Primary Care Services and 42.23% for Counseling/Mental Health Services.

As part of the 2021-2022 Community Health Needs Assessment Survey, BMH collected data around the COVID-19 Pandemic. The survey inquired if any person or persons in a household were tested for COVID-19 in the past two years and if COVID-19 limited any access for certain activities or services. The survey reported 78.83% of respondents have been tested in the past two years. As shown in graph 2 on page 20, 76.30% reported trouble accessing time with family/friends, 31.21% trouble accessing exercise, 28.32% general healthcare/doctor, and 22.16% had trouble accessing COVID-19 testing.

Table 8: Community Health Needs Assessment Survey Respondents by Zip Code 2021-2022

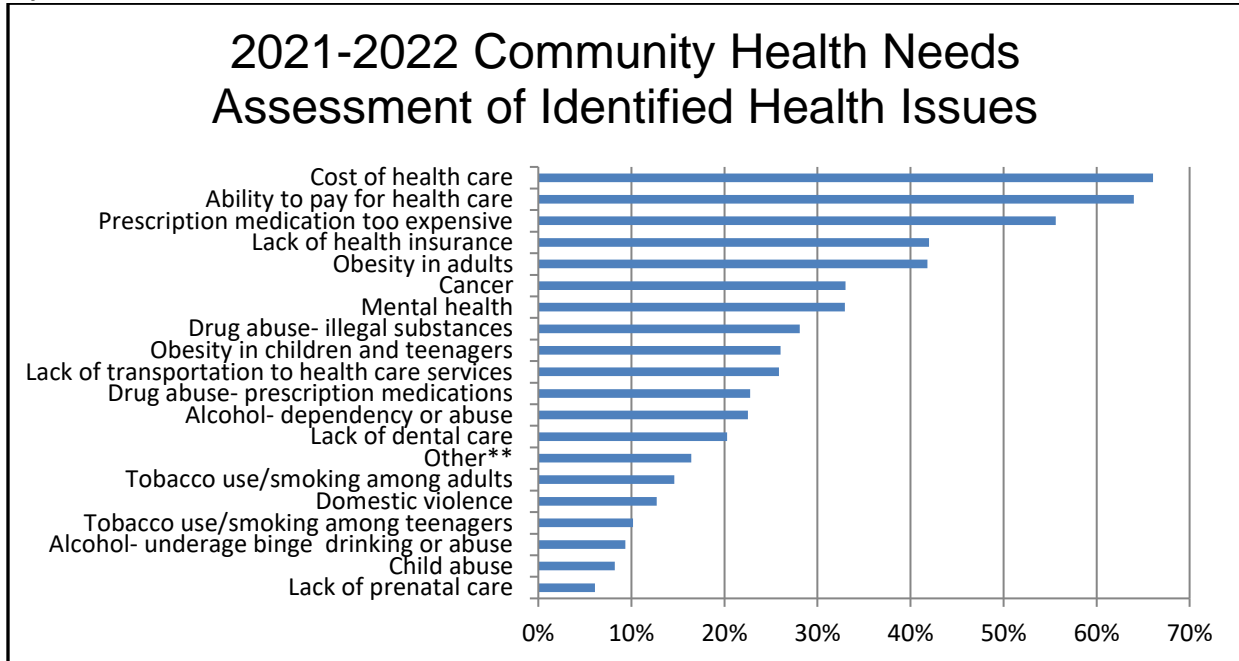
Zip Code	Geographic Location	Sample Size	Vulnerable Population
29907	Lady’s Island	171	Yes
29909	Bluffton/Hardeeville/Okatie	301	Yes
29902/29901/29903	Beaufort/Parris Island/Port Royal	162	Yes
29906	Beaufort/Laurel Bay/Port Royal/Shell Point	137	Yes
29920	Saint Helena Island	104	Yes
29910	Bluffton	218	Yes
29935/29905	Port Royal	35	Yes
29924/29944/29916/29918/29911	Hampton County including Varnville, Almeda, Brunson, Early Branch and Luray	19	Yes
29926/29928/29915	Hilton Head Island/Daufuskie Island	65	Yes
29936	Hardeeville, Ridgeland, Switzerland	22	Yes
29940/29941	Seabrook, Lobeco, Sheldon, Dale, Coosa	22	Yes

29927/29934	Hardeeville, Purrysburg, Limehouse, Levi, Pineland	36	Yes
29945	Yemassee, Salkahatchie, Gardens Corner	6	Yes
Outside Beaufort County and/or South Carolina		21	
Total		1,173	

Source: Beaufort Memorial Hospital Community Health Needs Assessment 2021-2022 Survey

Note: All survey respondents did not enter a zip code.

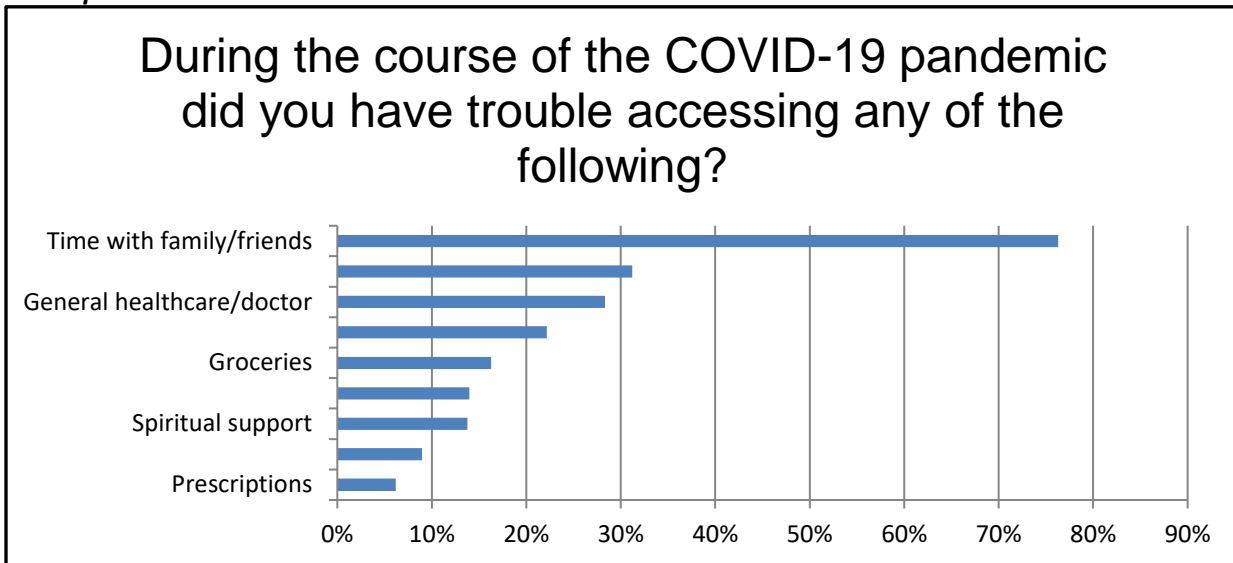
Graph 1



Source: Beaufort Memorial Hospital Community Health Needs Assessment 2021-2022 Survey

**Other responses (145 total) yielded 72% of write in responses as availability / access to health care services

Graph 2



Source: Beaufort Memorial Hospital Community Health Needs Assessment 2021-2022 Survey

Survey Collection Methods

Data was collected, analyzed and disseminated from a variety of sources. Data was scored, based on an evidence-based prioritization. Data from the Community Health Needs Assessment Survey 2022 was the primary “driver” of the items being scored to ensure the voice of the community was captured. The most significant measure included health problems (access to medical care, cost and ability to pay for health care, obesity, drug abuse, mental health issues, etc.) and health behaviors (diet, exercise, etc.). Respondents were instructed to check-off what they considered to be the most important health problems in their community. Measures used in the survey were grouped into categories, or constructs (i.e. cost, wellness/obesity, availability/access). The categories were ranked based on the percentages of responses received for each measure. Additionally, qualitative data was captured in the Community Health Survey in order to give respondents another outlet to express their opinions. A total of 1,320 residents were surveyed, spanning in age from high school students to senior citizens. Surveying opportunities were strategically chosen to ensure inclusion of vulnerable populations. Surveys were distributed through the BMH website and the hospital’s Facebook page, through the BMH COVID-19 updates mailing list and to various community groups. Other sites for electronic administration included distribution to all BMH employees, to Well at Work employers, AccessHealth of the Lowcountry, Good Neighbor Health Clinic, City of Beaufort employees, Town of Bluffton employees, University of SC Beaufort students and staff, Beaufort Jasper Hampton Comprehensive Health Services, BMH mobile wellness, Jasper County Government, Beaufort County School District, and BMH physician practices.

Scoring was based on three criteria: 1.) ability to evaluate outcomes of implemented strategies, 2.) size of population affected, and 3.) seriousness of the health problem. Scores are based on what data is available (anecdotal, baseline, trend). The size of the health problem is based on the percentage of the population affected by a particular problem. To evaluate the seriousness of a health problem, scores are based on the impact of a health problem (i.e. the nature of the problem, does it cause long term illness, death rates, hospitalizations, economic and community impact, etc.).

Results

The top four health problems identified through the ranking process of the 1,217 survey responses to the question “What do you think are the most pressing health problems in our community?” in descending order and combined due to like subject area were: 1.) Cost of health care/ability to pay for health care/prescription medication too expensive, and lack of health insurance 2.) Obesity and cancer 3.) Mental health, drug abuse, alcohol abuse 4.) Access and availability of healthcare services. Qualitative analysis further supports the results of the survey with the top four health problems being cost of health care, chronic disease relating to obesity/cancer, mental health and access/availability of healthcare services. Although obesity is not, in and of itself, excessive compared to Beaufort County data, South Carolina and national benchmarks, it is a precursor to other chronic diseases. Table 9 displays the prioritization of the needs.

Table 9: Beaufort Memorial Hospital Survey Prioritization of Health Needs 2022

Category*	Description	Number of Responses**	Percentage	Ranking
Cost of Healthcare	Ability to pay for health care, Cost of health care, Lack of health insurance, Prescription medication too expensive	2,771	40.75%	1
Chronic Disease	Obesity in adults, Cancer, Obesity in children and teenagers, Tobacco use	1,530	22.5%	2
Mental Health	Mental Health, Drug abuse – illegal substances and prescription medications, alcohol dependency or abuse and alcohol underage binge drinking or abuse	1,408	20.7%	3
Access/Availability of Healthcare Services	Availability of practitioners taking new patients, Access to preventative healthcare, Lack of transportation to healthcare services	104 of 145 write in responses	71.72%***	4

**A total of 1,217 responses to the survey question “What do you think are the most pressing problems in our community” were received. The categories reflect the top 3 consolidated issues and percentages based on survey responses.*

*** The number of responses is greater than the sample size due to the “check-off” nature of the surveys, in which participants could respond to multiple questions.*

****The survey provided a “write-in” option where 71.72% of responses identified access/availability as a pressing community health problem. This percentage of write-ins constituted a #4 ranking for overall health problems.*

2019 Community Health Needs Assessment Update of Implementation Strategies

The 2019 Community Health Needs Assessment (CHNA) was adopted by the Beaufort Memorial Hospital (BMH) Board of Trustees in September 2019 and was subsequently posted on the BMH website for public availability. Community health needs were identified through both qualitative and quantitative data collection and prioritized utilizing a criterion weighting methodology. Three strategies were chosen to address the prioritized needs. What follows is a review of the implementation activities that have transpired between September 2019 and August 2022.

Strategy 1:

Beaufort Memorial Hospital will support initiatives to address health care costs.

Implementation Activities:

- 1.) *Continue to provide the BMH Financial Assistance Application (FAA) where eligible patients pay 30% down for services then continue with arranged regular payments as indicated.*

FY 2020 - 404 patients were served with 1143 accounts which was lower than normal due to the pandemic and related communication challenges.

FY 2021 – 1,532 accounts listed as FAA with \$7,818,531.59 adjusted. This does not include access health or good neighbor patients.

FY 2022 (to July) – 638 accounts listed as FAA with \$3,007,493.76 adjusted. This does not include access health or good neighbor patients.

- 2.) *Continue to promote the MDsave online health care services in which payment covers physician, hospital (Imaging, Rehabilitation Services, Surgery and Medical Nutrition Therapy) and many pathology fees in one amount.*

FY 2020 - October, 2019 – Promoted the MDsave Mammogram Voucher special price (newspaper ads, social media ads, radio, elevator signs and on the website). January, 2020 – Included in blog article on “6 Ways to Save on Your Health Care” <https://www.bmhsc.org/blog/ways-to-save-on-your-health-care> (this content was also turned into a brochure. May, 2020 – Promoted the MDsave Mammogram Voucher special price (newspaper ads, social media ads, radio, elevator signs and on the website). Ongoing Website – We have “calls-to-action” (kind of like mini-ads) all over our website drawing attention to the program as well as ongoing social media posts and ongoing emails promoting the program.

FY 2021 – October, 2020 – Promoted the MDsave Mammogram Voucher special price (newspaper ads, social media ads, radio, elevator signs and on the website). May, 2021 – Promoted the MDsave Mammogram Voucher special price (newspaper ads, social media ads, radio, elevator signs and on the website). Ongoing Website – We have “calls-to-action” (kind of like mini-ads) all over our website drawing attention to the program as well as ongoing social media posts and ongoing emails promoting the program. Printed Materials – Program information included in the patient guide distributed in the hospital and rack cards available in practices and other facilities.

FY 2022 – October, 2021 – Promoted the MDsave Mammogram Voucher special price (newspaper ads, social media ads, radio, elevator signs and on the website). May, 2022 – Promoted the MDsave Mammogram Voucher special price (newspaper ads, social media ads, radio, elevator signs and on the website). Ongoing Website – We have “calls-to-action” (kind of like mini-ads) all over our website drawing attention to the program as well as ongoing social media posts and ongoing emails promoting the program. Printed Materials – Program information included in the patient guide distributed in the hospital, rack cards available in practices and other facilities, and added to the new design for provider bio cards.

3.) *Promote, support and expand the hospital’s telehealth visits through BMH Care Anywhere so that a provider is available anywhere for one set fee.*

FY 2020- 4,928 visits were documented and performed in *BMH Care Anywhere*. Additional telemedicine applications are also utilized by the Beaufort Physician Partners clinics. Under the federal CARES ACT regarding Covid, free Covid related visits were offered March 18-May 31, 2020.

FY 2021 – 1,193 visits were documented and performed in *BMH Care Anywhere*.

FY 2022 (to August) – 451 visits were documented and performed in *BMH Care Anywhere*.

4.) *Continue to support the AccessHealth Lowcountry program for the uninsured (ages 19-64) to provide access to primary and specialty care for residents of Beaufort and Jasper Counties.*

FY 2020 - Beaufort Memorial Hospital continued to support AccessHealth Lowcountry through the provision of office space, IT equipment and support, supplementing staff salaries and providing employee benefits. BMH also provided primary care to approximately 230 patients who have been assigned to a Beaufort Memorial Physician Partners for their medical home. In addition, over 200 patients from the areas free clinics and federally qualified community health centers were seen and treated by a Beaufort Memorial specialists. Twenty-eight (28) free colonoscopies were provided in 2020.

FY 2021 - Beaufort Memorial Hospital continued to support AccessHealth Lowcountry through the provision of office space, IT equipment and support, supplementing staff salaries and providing employee benefits. AccessHealth enrolled 648 patients in case management, 203 patients assigned to a BMH primary care physician, 114 patients enrolled in DHHS healthy outcomes program, 540 referrals navigated for specialty care and 317 colorectal fit tests completed with 29 colonoscopies.

FY 2022 (to July '22) - Beaufort Memorial Hospital continued to support AccessHealth Lowcountry through the provision of office space, IT equipment and support, supplementing staff salaries and providing employee benefits. AccessHealth enrolled 598 patients in case management, 177 patients assigned to a BMH primary care physician, 81 patients enrolled in DHHS healthy outcomes program, 399 referrals navigated for specialty care and 429 colorectal fit tests completed with 24 colonoscopies.

- 5.) *Continue to support the Good Neighbor Free Medical Clinic of Beaufort which serves uninsured residents of northern Beaufort County.*

FY 2020- Beaufort Memorial donated \$50,000 in cash as well as covering charges of \$398,021.14 for Good Neighbor patients in these Categories-Bluffton and Beaufort Imaging, cardiology, CT, Emergency Room, Imaging, labs, MRI, nuclear medicine, pharmacy, respiratory therapy, ultrasound/echo and the Women's Center services.

FY 2021 – Beaufort Memorial covered charges of \$666,439.37 for Good Neighbor patients. BMH did not make a cash donation in 2021, instead providing the building for Good Neighbor at 974 Ribaut Rd, on the BMH campus.

FY 2022 (to July '22) – Beaufort Memorial covered charges of \$430, 590.75 for Good Neighbor patients. BMH did not make a cash donation in 2022, instead providing the building for Good Neighbor at 974 Ribaut Rd, on the BMH campus.

- 6.) *Provide a patient assistance pharmaceutical program for eligible patients who are uninsured or underinsured.*

Beaufort Memorial continues to use funds from the Betty Mazarin Medication Assistance fund to assist patients who are uninsured or don't have any type of medication coverage.

Care Coordination staff work closely with the BMH Medication Reconciliation Team to review a patient's medication regimen to determine if medications are the least expensive option for the patient's identified diagnosis and assist for multiple medication usage. Based on this assessment, recommendations will be made by the pharmacist to the patient's physician for consideration of change in the current medication recommendation. Patients are supplied with information on potential ongoing medication assistance programs that are available to them and are also given information on various low cost generic programs available at local pharmacies. In

FY 2020 - The Betty Mazarin Fund assisted 460 patients with discharge medications for a total of \$19,609.13.

FY 2021 – The Betty Mazarin Fund has assisted 536 patients with discharge medications for a total of \$23,899.72.

FY 2022 (through June '22) - The Betty Mazarin Fund has assisted 324 patients with discharge medications for a total of \$15,026.29.

7.) *Continue to provide the CHiP mobile wellness van which provides free and low cost screenings for the Beaufort and Jasper County community.*

FY 2020 - The CHiP mobile wellness van and staffing were provided by the hospital and in a series of 55 events provided screenings to 1146 residents of Beaufort and Jasper Counties. Free and low cost screenings included glucose checks, lipids and PSA's for men as well as clinical breast exams, prostate exams and skin cancer checks. Screenings and community events were halted in March 2020 due to the pandemic. In FY 2020 a new mobile wellness van was purchased by the hospital's Foundation and was used as a clinical setting for special mass Covid vaccination clinics as well as daily pre-surgical Covid screenings and weekly free community Covid tests in the hospital's Okatie location. The hospital's original mobile wellness van was used for pre-surgical and community Covid screenings in Beaufort.

FY 2021 – The mobile wellness unit solely provided COVID-19 testing for the community during FY 2021.

FY 2022 (to July '22) - The mobile wellness unit provided 32 events and has screened 748 people. There has been 397 blood pressures with 46 abnormal, 372 glucose screenings with 30 abnormal, and 174 lipid screenings with 111 abnormal and 66 prostate screenings with 10 abnormal.

8.) *Provide flu shot clinics as preventive measures for community wellness.*

FY 2020 - the Community Health Improvement Program served several communities by providing 340 flu shots at annual community events. The senior dose of the influenza vaccine was provided for the first time.

FY 2021 – the Mobile Wellness Unit (rebranded 2020) solely provided COVID-19 testing to the community in FY 2021.

FY 2022 – the Mobile Wellness Unit provided approximately 500 flu shots at annual community events.

9.) *Monitor growth of access to care through the addition of express care sites.*

The Beaufort Express Care and Occupational Health clinic opened on February 2018, and in order to meet the need for additional express care and occupational health services, the Bluffton Express Care and Occupational Health clinic opened on September 9, 2019. A third express care clinic, the Okatie Express Care and Occupational Health, clinic opened on November 2, 2020. The third clinic is located closer to Jasper County.

FY 2020 - Express Care in Beaufort served 11,096 persons.

FY 2021 – Express Care Beaufort served 17,750 persons.
Express Care Bluffton served 13,628 persons.
Express Care Okatie served 4,077 persons.

YTD 2022 – Express Care Beaufort served 11,745 persons.

Express Care Bluffton served 7,664 persons.
Express Care Okatie served 6,165 persons.

10) Navigate patients receiving financial assistance to ensure they have a primary care provider.

Patients who receive financial assistance are referred to the AccessHealth Lowcountry program for placement with primary care providers. These may be providers in the Beaufort Physician Partners network, or through the area's free medical clinics and the Federally Qualified Health Centers.

Strategy 2:

Beaufort Memorial Hospital will partner with other community organizations to provide programs that address alcohol, drug and mental health issues.

Note: The hospital is not licensed to provide inpatient chemical dependency treatment. All efforts to address alcohol and other drugs will be on an outpatient basis.

Implementation Activities:

- 1. Promote the Beaufort County medication drop boxes to remove unwanted medication in conjunction with efforts of the Beaufort County Sheriff's Office.*

Rack cards entitled "Do you have unused medications? We've got the drop!" were created and distributed throughout the county. Social media posts were completed on the hospital's website, Facebook, Twitter and LinkedIn accounts. The LinkedIn account reached more than 4,329 followers over two years.

FY 2022 (to August) – Beaufort Memorial promoted drop box locations on social media. BMH has 10,881 Facebook page likes, 1,277 Instagram followers, 2,096 twitter followers and 4,951 LinkedIn followers.

- 2. Implement Screening Brief Intervention and Referral to Treatment (SBIRT) program, a comprehensive, integrated public health approach to the delivery of early intervention and treatment services in the hospital's Emergency Department to address addictions in partnership with the Beaufort County Alcohol and Drug Abuse Department.*

Due to challenges with staffing and oversight of the program, this program was not initiated in FY 2020.

FY 2021-The contract with the Beaufort County Alcohol and Drug Abuse Department was signed in April 2021 with Steve Larson, MD as the medical director and Amanda Stutts, RN as the Emergency Department clinical liaison. FY 2021 and 2022 (to July '22) – 11 referrals from Beaufort Memorial Emergency Department to BCADAD.

3. *Continue partnership with Beaufort County Alcohol and Drug Abuse Department (BCADAD). Clients are screened by the hospital's Emergency Department, participate in counseling at BCADAD, then are referred to the hospital's Beaufort Physician Partners for suboxone medication and required regular medication assessment visits.*

FY 2020 - The partnership benefited 25 patients in this time period. Benefited

FY 2021 and 2022 (to July '22) – 11 referrals from Beaufort Memorial Emergency Department to BCADAD.

4. *Expand promotion of program and referrals to South Carolina Department of Health and Environmental Control's evidence-based Quit line telephone counseling program for tobacco cessation.*

FY 2020-Community Health provided information packets and education on this program to the following hospital departments: The Breast Health Center, Radiation Oncology at the Keyserling Cancer Center, AccessHealth Lowcountry, OB GYN Specialists, Lowcountry Medical Group, Harrison Peeples, Beaufort Primary Care and Lady's Island Internal Medicine, Beaufort and Bluffton Express Care clinics, the CHiP mobile wellness van, Surgical Specialists, Beaufort Memorial Orthopedic Specialists and Well at Work. The Quitline was also promoted to the Good Neighbor Free Medical Clinic of Beaufort, the Burton Fire District, the Beaufort Orthopedic Sports and Spine Center and the Together for Beaufort County Pathways to Parenthood coalition. This resource was added to the hospital's patient guides which are provided for all inpatients. Promotion and referrals were negatively impacted part of this time due to Covid pandemic restrictions regarding meetings and distribution of literature.

In the Emergency Department, the ED provider may select the Smoking Cessation form to be included in the discharge packet for the patient which contains information on the SC DHEC Quitline.

FY 2021 –Effective 5/13/2021- At discharge, the SC DHEC Tobacco Quitline questionnaire has been added to the discharge checklist. Clinical staff use the Tobacco Quitline Fax Referral form located in AccessE forms to fax a patient's information to SC DHEC. A SC DHEC Tobacco Quitline counselor will then contact the patient upon discharge.

FY 2022 – Tobacco cessation referrals are sent by primary care providers to the Lifefit Wellness Center via fax. Community health calls patients and provides Quitline information for smoking cessation.

5. *Track and monitor patient utilization of BMH Care Anywhere telehealth health visits for behavioral health appointments.*

FY 2020 - 220 visits for behavioral health with additional patient visits using other platforms.

FY 2021 – 2,580 visits for behavioral health with additional patient visits using other platforms.

FY 2022 – 1,524 visits for behavioral health with additional patient visits using other platforms.

Strategy 3: Beaufort Memorial Hospital will continue to address chronic disease management.

Note: Community survey responses targeted cancer and obesity as primary issues.

Implementation Activities:

1. *Continue to provide outpatient pediatric and adult Medical Nutrition Therapy to address weight loss/weight management through consultations with registered dietitians in Beaufort and Bluffton.*

The hospital's registered dietitians provided weight management which includes medical nutrition therapy in locations in both Beaufort and Bluffton. In addition, one BMH family practitioner provides a weight management program with intensive behavioral therapy from a registered dietitian. FY 2020 - 226 patients were served (188 adult/38 pediatric) with a combined total of 500 visits (459 adult/41 pediatric) with a dietitian in these medical nutrition therapy and intensive behavioral therapy services.

Weight management intensive behavioral therapy
FY 2020 – 799 patients served
FY 2021 – 754 patients served

Diabetes care center: pediatrics, weight management and diabetes management:
FY 2020 – 772 patients served
FY 2021 – 819 patients served

2. *Continue to promote and provide the LifeFit Wellness Center's Body Make Over to engage members, employees and the community.*

FY 2020 -Due to Covid and reallocation of staffing to assist with Covid needs in the hospital, the January 2020 program was shortened. Virtual education and training sessions were provided. Approximately 25-30 people were served in this year.

FY 2021 – Due to Covid-19 and relocation of Lifefit staff the Body Make Over program was not offered.

FY 2022 - In January 2022, LifeFit offered a modified Body Makeover program, called "Body Makeover Express," to the community. Approximately 25 individuals participated in this program. Participants received 24 group personal training sessions, weekly education on nutrition and lifestyle change, and body composition assessments pre- and post-participation.

3. *Promote and track utilization of Dr. Ivette Pellegrino's weight management program from a Beaufort Physician Partners' clinic. Program provides dietary guidance, pharmaceutical intervention, and lifestyle behavior modification to encourage weight loss in obese patients.*

FY 2020 -Dr. Pellegrino saw 158 patients for weight management services. She ordered nutritional counseling or intensive behavioral therapy with a dietitian for most patients who participate in the program.

FY 2021 – Dr. Pellegrino saw 165 patients for weight management services. She ordered nutritional counseling or intensive behavioral therapy with a dietitian for most patients who participate in the program.

FY 2022 (to July) - Dr. Pellegrino saw 173 patients for weight management services. She ordered nutritional counseling or intensive behavioral therapy with a dietitian for most patients who participate in the program.

4. *Continue the hospital's monthly General Cancer Support Group for cancer patients and caregivers.*

FY 2020 - The General Cancer Support Group met October 2019-January 2020 and served 39 patients and caregivers. Staffing changes and the pandemic then caused the suspension of the group.

FY 2021 – Cancer support groups were paused due to the COVID-19 pandemic.

FY 2022 – Cancer support groups were reinstated with little to no participation. Support groups are promoted via social media and print around the BMH campus.

5. *Provide programs through the LifeFit Wellness Center and Outpatient Rehabilitation Services for cancer patients, which includes three month's free access to the Center as well as lymphedema screening.*

FY 2020- 10 patients participated in the cancer program and 3 were *screened for* lymphedema. Services were interrupted due to the pandemic.

FY 2021 – Cancer program discontinued and 12 were *screened for* lymphedema.

FY 2022 – Cancer program discontinued and 9 were *screened for* lymphedema.

6. *Continue support of the Dragon Boat Beaufort program which provides financial assistance to the area's cancer patients.*

The hospital's patient navigators request financial assistance for cancer patients from the Dragon Boat program in the areas of medical equipment and supplies and transportation services for medical appointments.

FY 2020 -Employee's donations to the Beaufort Memorial Foundation designated for the Dragon Boat Beaufort program totaled \$5,316.

FY 2021 – Employee's donations to the Beaufort Memorial Foundation designated for the Dragon Boat Beaufort program totaled \$3,062.85.

FY 2022 (to July) - Employee's donations to the Beaufort Memorial Foundation designated for the Dragon Boat Beaufort program totaled \$1,584.42.

7. *Promote and provide the hospital's CHiP mobile wellness van to offer free and low-cost screenings in Beaufort and Jasper Counties. Screenings include blood pressure, glucose, cholesterol and cancer*

screenings -Prostate Specific Antigen (PSA) labs, clinical breast exams, prostate exams and skin cancer checks.

FY 2020 - The CHiP mobile wellness van provided screenings to 1,165 residents of Beaufort and Jasper counties. Normal screening operations were halted in March due to safety precautions around Covid 19.

A second mobile wellness van was purchased and delivered in February 2020 and was a mobile testing site for drive up pre- surgical and Covid testing.

FY 2021 – Both mobile units provided COVID-19 testing services in Beaufort and Okatie.

FY 2022 – The mobile wellness began normal operations again March 2022, year to date 748 people have been screened across 32 events.

8. *Continue partnership with the SC Department of Health and Environmental Control Health wise initiative with the CHiP mobile wellness van providing screenings for the uninsured and underinsured of Beaufort and Jasper Counties at specified community events.*

FY 2020 - The CHiP mobile wellness van provided screenings at four health wise initiative events which served 108 residents of Beaufort and Jasper Counties. Some additional planned events were not held due to the restrictions from the Covid 19 pandemic.

FY 2021 and FY 2022 – No events were held due to COVID-19. There are plans to start attending Healthies events in the fall of 2022.

10. *Provide Delay the Disease program which offers evidence-based physical activity concepts for Parkinson's disease patients through the hospital's Lifefit Wellness Center.*

FY 2020 – Delay the Disease classes offered twice weekly for people with Parkinson's disease and other movement disorders. Between 10 and 15 participants engaged in the classes on a weekly basis until March of 2020 and classes were paused due to Covid-19.

FY 2021 – Delay the Disease classes began being offered again twice weekly in January 2021.

FY 2022 (to July) – Delay the Disease classes offered with 10-15 participants in 2 classes twice a week.

12. *Increase utilization of Lifefit Wellness Services programs – Cardiac/Pulmonary Rehabilitation, the LifeFit Wellness Center and the CHiP Mobile Wellness – to prevent readmissions in high risk populations.*

FY 2020 - The Beaufort Memorial Cardiopulmonary Rehab program continues to serve patients with heart and lung conditions referred by their provider.

FY 2021 – The program expanded into Okatie in November 2020 allowing access to South of the Broad patients for cardiopulmonary rehab services.

FY 2022 – The Beaufort Memorial Cardiopulmonary Rehab program is in full swing in Beaufort and Okatie locations recovering to pre-pandemic levels of participation.

14. Promote and monitor referrals to the hospital's Joint Optimization Program.

FY 2020 - 2022 – The Joint Optimization Program has been discontinued. In its place, a referral process from all Beaufort Memorial providers has been created, with the purpose of connecting patients directly with Wellness Center staff.

15. Provide screening interventions for chronic disease management through vascular screenings, calcium scoring tests and low dose lung CT scans.

FY 2020 - 298 vascular screenings were performed as well as 513 low dose CT's and 244 calcium scoring tests.

FY 2021 – 382 vascular screenings, 692 low dose CT's and 457 calcium scoring tests were performed.

FY 2022 (to August) – 203 vascular screenings, 868 low dose CT's and 699 calcium scoring tests were performed.

16. Provide telehealth for residents of Hampton County, a rural area adjacent to Beaufort County which the hospital serves in a primary care clinic.

In a partnership with the South Carolina Telehealth Alliance, telemedicine carts were provided for tele cardiology.

FY 2020 - The new program served 7 patients.

FY 2021 – The program served 4 patients.

FY 2022 (to August) – The program served 24 patients.

17. Increase frequency of chronic care management visits for Medicare patients through the hospital's Beaufort Physician Partners network.

Due to the reorganization of the Transitional Care/Bridge to Home department and staffing changes this was not implemented in FY 2020.

Chronic disease management BCBS Patient Centered Medical Home – A model of patient care that uses a team-based approach and emphasizes care coordination and communication to provide quality care, help lower medical costs and achieve an excellent patient care experience. Self-care management support services are available to these patients to better manage chronic conditions. The program started in 2021.

2021 – 94 enrolled patients

2022 (to August) – 281 enrolled patients

Chronic Care Management - Expert assistance with setting and meeting health goals for those patients enrolled in Medicare with 2 or more chronic conditions. Started in late March 2022 with one provider at Beaufort Primary Care. As of August 2022, 25 patients enrolled in this program.

18. *Provide screenings and education programs for employers engaged in the hospitals Well at Work program.*

FY 2020 - The Well at Work program screened 3,601 employees at 84 events for the fiscal year 2020. The 84 events included flu shot clinics, firefighter physicals, after hours' mammogram events, nutrition education lunch and learns, Covid 19 testing events, employer health fairs and employer open enrollment events.

FY 2021 – The Well at Work program screened 2,055 persons at 84 events.

FY 2022 (to August) – The Well at Work program screened 1,711 persons at 68 events.

19. *Monitor efforts of the hospital's website, social and print media, Speakers Bureau and health fairs to address prevention and intervention efforts toward chronic disease.*

The hospital's used digital media to offer these blog articles in addition to Pandora ads running for cancer and heart screenings:

- 5 Questions About Mammograms Answered - <https://www.bmhsc.org/blog/answers-to-5-questions-about-mammograms> (plus 3 breast cancer patient stories in October for breast cancer awareness month)
- Lung Cancer Risk Factors - <https://www.bmhsc.org/blog/what-is-your-lung-cancer-risk>
- Could it be COPD? - <https://www.bmhsc.org/blog/could-it-be-copd>
- How Smoking Affects Your Heart - <https://www.bmhsc.org/blog/effect-of-smoking-on-your-heart>
- Helping Loved Ones With Addiction - <https://www.bmhsc.org/blog/helping-loved-ones-with-addiction>
- Weight-Loss Habits Working Against You - <https://www.bmhsc.org/blog/weight-loss-habits-that-are-working-against-you>
- Reverse Prediabetes for a Better Future - <https://www.bmhsc.org/blog/prediabetes-and-your-future>
- Food Rules for a Healthy Heart - <https://www.bmhsc.org/blog/food-rules-for-a-healthy-heart>
- Why Women Shouldn't Overlook Heart Disease - <https://www.bmhsc.org/blog/why-women-shouldnt-overlook-heart-disease>
- What is Gestational Diabetes? - <https://www.bmhsc.org/blog/what-is-gestational-diabetes>
- At-Home Colon Cancer Tests vs. Colonoscopies - <https://www.bmhsc.org/blog/at-home-colon-cancer-tests-vs-colonoscopies>
- Exercise Offers Help to Cancer Patients - <https://www.bmhsc.org/blog/exercise-offers-help-to-cancer-patients>
- Prostate Cancer Screenings: The Facts - <https://www.bmhsc.org/blog/prostate-cancer-screenings-the-facts>
- Diabetes Do's and Don'ts - <https://www.bmhsc.org/blog/diabetes-dos-and-donts>
- African American Men and Prostate Cancer - <https://www.bmhsc.org/blog/african-american-men-and-prostate-cancer>
- Breast Cancer Screening for Women with Dense Breasts - <https://www.bmhsc.org/blog/breast-cancer-screening-for-women-with-dense-breasts>

Besides social media posts for each of the above, other social posts included:

- Gyn cancer risk - <https://business.facebook.com/146804608690131/posts/3279618658742028/>

- Women’s Screenings - <https://www.facebook.com/BeaufortMemorial/photos/a.157621997608392/3223572374346657/?type=3>
- Colorectal Cancer - <https://www.facebook.com/BeaufortMemorial/photos/a.157621997608392/3220366494667245/?type=3>
- Skin Cancer Screening - <https://business.facebook.com/146804608690131/posts/2942871239083440/>
- Stroke - <https://business.facebook.com/146804608690131/posts/2926426370727927/>
- Mammography - <https://business.facebook.com/146804608690131/posts/2912280482142516/>
- \$99 Mammography Special - <https://business.facebook.com/146804608690131/posts/2909055965798301/>
- \$99 Mammography Special - <https://business.facebook.com/146804608690131/posts/2895215183849046/>
- Colorectal cancer - <https://business.facebook.com/146804608690131/posts/2748547038515862/>
- Vascular Screening - <https://business.facebook.com/146804608690131/posts/2723931794310720/>
- Coronary Calcium Scoring - <https://business.facebook.com/146804608690131/posts/2690494580987775/>
- Wear Red for Heart Disease - <https://business.facebook.com/146804608690131/posts/2698079840229249/>
- World Cancer Day - <https://business.facebook.com/146804608690131/posts/2692524937451406/>
- Cancer Care - <https://business.facebook.com/146804608690131/posts/2689876541049579/>
- Heart Screening - <https://business.facebook.com/146804608690131/posts/2681608838543016/>
- Heart Health - <https://business.facebook.com/146804608690131/posts/2498607123509856/>
- Family Heart Health - <https://business.facebook.com/146804608690131/posts/2475311775839391/>
- Breast Cancer - <https://www.facebook.com/BeaufortMemorial/photos/a.157621997608392/2464967796873789/?type=3>
- Free Clinical Breast Exams - <https://business.facebook.com/146804608690131/posts/2462613097109259/>
- Breast Cancer Risk - <https://www.facebook.com/BeaufortMemorial/photos/a.157621997608392/2456219691081933/?type=3>

FY 2020 - The website had 1,677,860 page views and the multiple subjects offered by blog had 31,162 page views.

FY 2021 – The website had 1,982,854 page views and 46, 456 blog page views.

FY 2022 (to Aug 20.) – The website had 1,730,364 page views and 292,242 blog page views.

20. *Provide the CHNA 2019 community health resource inventory as a resource guide for the community through the hospital’s website.*

Community Health Resource Inventory

In accordance with the IRS proposed regulations governing the submission of a Community Health Needs Assessment (CHNA), an inventory of existing community resources is available to address the needs identified in the CHNA Survey and displayed in Table 10. Table 11 delineates the identified needs, whether it is being addressed by Beaufort Memorial Hospital or other community resources.

Table 10: Community Health Resource Inventory

	Name of Resource	Description	Population Served
1.	ABLE – The Disabilities Foundation of Beaufort County	A non-profit organization that supports special services for individuals with developmental disabilities. ABLE grants fund a summer programs for disabled children and a mentoring program for adults. http://ablefoundationbc.org	Beaufort County
2.	Access Network	Care management for persons affected by HIV-AIDS, their families, friends, care-partners, emergency assistance for medication, housing, utilities, nutrition, and transportation. Free counseling and testing. http://www.theaccess-network.org	Beaufort, Colleton, Hampton and Jasper Counties
3.	AccessHealth Lowcountry of Together for Beaufort County	AccessHealth Lowcountry is a program to help citizens ages 19 to 64 to find medical care with providers who offer free or sliding fee scale services. They work with low income, uninsured adults, and ages 19-64, in Beaufort and Jasper counties. In addition to helping citizens find a primary care provider, they assist with prescription drugs and transportation. http://www.accesshealthlowcountry.org	Beaufort and Jasper Counties
4.	Adequacy of Prenatal Care Coalition of Together for Beaufort County, now called Pathways to Parenthood	The Adequacy of Prenatal Care Coalition works to increase the percentage of births reported as having received adequate prenatal care throughout Beaufort County. Women who see a health care provider regularly during pregnancy have healthier babies, are less likely to deliver prematurely and are less likely to have other serious problems related to pregnancy. Beaufort Memorial Hospital is a founding member of the coalition which formed in 2006. http://www.BeaufortBaby.com	Beaufort and Jasper Counties
5.	AGAPE Family Life Center	Provides a food bank, clothing, GED classes, life skills, after school programs, summer camp, exercise classes, facility rentals. https://www.agapeflc.org	Jasper County; any county for GED classes
6.	Al-Anon Family Group	The Al-Anon Family Groups are a fellowship of relatives and friends of alcoholics who share their experience, strength, and hope in order to solve their common problems. http://al-anon-sc.org	Beaufort County
7.	Alcoholics Anonymous	Alcoholics Anonymous® is an international fellowship of men and women who share their experience, strength and hope with each other that they may solve their common problem and help others to recover from alcoholism. http://www.area62.org/lookup.php	Beaufort County

8.	American Cancer Society	Services for all cancer diagnoses. Provides access to referrals for financial assistance, temporary housing, wigs, and transportation and prescription assistance. http://www.beaufortsc.org/services/non-profits/american-cancer-society/	Nationwide non-profit available to all cancer patients and their caregivers
9.	American Red Cross – Palmetto Chapter	Disaster Services – 24/7 single family and large disasters provides emergency food, shelter, and emotion support; Disaster Preparedness and Education; Service to the Armed Forces – 24/7 emergency communications, counseling, financial assistance, and other services to members of the Armed Forces, veterans and military families; Lifesaving Blood; CPR, First Aid and AED certifications; Babysitting and Caregiving training; Swim and Water Safety; and International Service, which includes family tracing during disasters and conflicts. http://www.redcross.org/sc/north-charleston	Disaster – Colleton, Hampton, Jasper, and Beaufort Counties Armed Forces – All counties in South Carolina
10.	AMIkids Beaufort	A national non-profit organization that provides troubled youth the support they need to become great people. http://www.amikids.org/programs-and-services/programs/amikids-beaufort/story/about	Beaufort County
11.	BabyNet – South Carolina’s Early Intervention System	Provides evaluation and assessment for infants and toddlers with developmental delays. https://www.scdhhs.gov/resource/babynet	Beaufort, Jasper, Hampton and Colleton Counties
12.	Beaufort and Jasper Counties Sheriffs’ Offices	Partners with the South Carolina Department of Public Safety and law enforcement agencies across the Palmetto State for the annual seatbelt campaign observed during the Memorial Day weekend. The effort and enforcement focus on the importance of using a seatbelt while driving or riding in a vehicle. Beaufort County Sheriff's Office Crime Prevention Specialist is responsible for all community and business crime prevention initiatives within the jurisdiction of the Sheriff's Office. http://www.bcsso.net/home.php	Beaufort and Jasper Counties
13.	Beaufort County Alcohol and Drug Abuse Department	A component of Beaufort County Government established under South Carolina law to help individuals and families troubled by alcohol, tobacco or other drug related problems with outpatient and prevention programs. http://www.bcgov.net/departments/Community-Services/alcohol-and-drug-abuse/index.php	Beaufort County
14.	Beaufort County Department of Social Services	Provides adult protective services, child protective services, family independence, food stamps, foster care services, foster home and group home licensing, referrals for child support, emergency financial services (utilities and medicine). https://dss.sc.gov/contact/beaufort/	Beaufort County
15.	Beaufort County Disabilities and Special Needs	Provides family support services, residential, employment services, day programs, early intervention. http://www.bcgov.net/departments/Community-Services/disabilities-and-special-needs/index.php	Beaufort County

16.	Beaufort County Early Childhood Coalition & School Readiness Workgroup	This coalition and workgroup build collaborative efforts to assist Beaufort County children to be healthy and ready for success upon entering school. https://www.beaufortcountysc.gov/human-services/how-to-get-involved.html	Beaufort County
17.	Beaufort County First Steps	South Carolina First Steps is the state's early childhood education initiative. The program's efforts ensure Beaufort County's children are ready for school success. Includes home visitation strategies, child care quality enhancement strategies and early identification and referral strategies. https://beaufortfirststeps.com/	Beaufort County
18.	Beaufort County Health Department, SC DHEC Lowcountry Region	Family planning, immunizations, STD testing, TB testing and WIC prenatal resources, and community health promotion. https://scdhec.gov/health/public-health-departments-clinics	Beaufort County
19.	Beaufort County Sheriff's Office	Special Operations Branch offers School Resource Officer's Program, Diversion Programs, Domestic Abuse Prevention Program, Gang Resistance Education and Training, Educational programs for parents, educators and community organizations, and drug awareness training for school-age children. http://www.bcsso.net/home.php	Beaufort County
20.	Beaufort County Youth Conference	The annual <i>Youth Conference</i> is a one-day educational event planned by teens for their peers. It was developed and delivered by a partnership of Carae's Lowcountry Modeling, the Beaufort County Alcohol and Drug Abuse Department, Department of Social Services, Technical College of the Lowcountry, Beaufort Memorial Hospital, the Boys & Girls Clubs of the Lowcountry, several faith-based organizations and area teenagers. https://caraesbeaufort.org/beaufort-youth-conference.html	Beaufort County
21.	Beaufort Housing Authority	Beaufort Housing Authority – Housing provided to those in need who meet eligibility guidelines. www.beaufortha.com	Beaufort County
22.	Beaufort Jasper Economic Opportunity Commission	Direct assistance with utilities, emergency heating/cooling, housing rehabilitation, prescription medication assistance, rental assistance, emergency assistance with food, Youth Leadership Program, child and adult care food program, Head Start and Early Head Start. Includes assistance for cancer. www.beaufortjaspereoc.org	Services available to Beaufort and Jasper Counties (Poverty income guidelines)
23.	Beaufort Jasper Hampton Comprehensive Health Services, Inc.	Federally Qualified Health Centers that offer primary care, gynecology, obstetrics, pediatrics, pharmacies, WIC, nutritional consultations, mammography, migrant health programs and Ryan White (HIV/AIDS) medical services. http://www.bjhchs.org	Eight health centers serve children and adults on a sliding fee scale in Beaufort, Jasper, and Hampton Counties
24.	Beaufort Soil and Water	Partner with USDA Natural Resources Conservation Service (NRCS), SC Department of Natural Resources, and Beaufort County to conserve, maintain and improve our environment by promoting wise land use	Beaufort County

Conservation District	practices, technical assistance, providing environmental education programs, and promoting hiking and paddling trails in Beaufort County. Key programs include the Together for Beaufort County Water Quality Committee, storm water education, school and festival outreach programs, and Eco Camp. http://www.beaufortconservationdistrict.org	
25. Best Chance Network	The Best Chance Network (BCN) program provides free breast and cervical cancer screenings for South Carolina women who meet program eligibility requirements. The BCN is primarily funded by the Centers for Disease Control and Prevention (CDC), the Prevention and Public Health Funds and state funds allocated by the South Carolina Legislature. Screening services include mammograms, clinical breast exams, pap tests, pelvic exams, human papillomavirus tests, diagnostic testing for women with abnormal screening results, support services including patient navigation and referral for treatment, and community education on breast and cervical cancer. https://scdhec.gov/health/diseases-conditions/cancer/best-chance-network-women-may-qualify-free-cancer-screenings	State of South Carolina
26. Better Choices Better Health	Workshop for adults with ongoing health conditions such as arthritis, chronic lung disease, depression, diabetes, heart disease, high blood pressure. Workshops are 2-1/2 hours and held each week for six weeks. They support practical ways to deal with pain and fatigue; information on nutrition and exercise; help understanding how to live with difficult emotions; learning ways to talk with your doctor and family about your health. : https://uwlowcountry.org/community-directory/name/better-choices-better-health/	Beaufort, Jasper, Colleton, and Hampton Counties
27. Bluffton Self Help	Bluffton Self Help is a South Carolina non-profit charity committed to providing free food, clothing and short-term financial assistance for Bluffton area adults, while supporting them to become more self-reliant. http://www.blufftonselfhelp.org	Greater Bluffton area of Beaufort County
28. BMH Care Anywhere	This Beaufort Memorial Hospital program provides 24/7 online doctor visits with no appointment necessary. The virtual doctor visit is private and secure and offers board-certified providers. <i>BMH Care Anywhere</i> providers can consult, diagnose and prescribe for cold/flu, sore throat, allergies, infection and more for adults and children. A smart phone, tablet or computer are necessary for the virtual visits. https://bmhcareanywhere.org/landing.htm	
29. Born To Read	Registered 501(C) 3 non-profit charitable organization promoting early literacy in the Lowcountry. New parents are given a gift bag with a book and advice on the importance of reading to their child starting in infancy. If requested by parents, referrals are provided for obtaining a GED, attending English classes for non-English speaking parents, and help in seeking a pediatrician for their family. http://borntoread.org	Beaufort and Jasper Counties

30.	Bridge to Home Program – Beaufort Memorial Hospital, a Care Transitions Initiative	Provides coordination to ensure continuity of care for patients with defined chronic diseases when discharged from the hospital. Goals are to assist in the transition from hospital to home, provide patient education, medication, and appropriate follow-up care. https://www.bmhsc.org/health-and-wellness/education-support/bridge-to-home-program	Beaufort Memorial Hospital patients with chronic diseases who reside in Beaufort, Jasper or Hampton Counties
31.	Cancer Awareness Foundation / Off Island Thrift Store	Provides financial assistance to cancer patients. http://www.offislandthrift.com/	Southern Beaufort County including Hilton Head, Bluffton, and Okatie
32.	Cancer Care	All cancer diagnoses – Limited financial grants for transportation, homecare, childcare, and pain medications. Also, Linking Arms Program can provide grant for breast cancer patients to help with oral medications and lymphedema supply costs. Assistance is also available for men. https://www.cancercare.org/	Nationwide non-profit providing services to all qualifying cancer patients
33.	Cancer Care Co-Payment Assistance Foundation	Provides co-payment assistance for pharmaceutical products to insured individuals who are covered by private insurance, employer-sponsored health plan, or have Medicare Part D or Medicare Advantage. Household income must be at or within 400% US Federal Poverty guidelines for people residing and receiving treatment in the United States or its territories. Financial assistance for all types of cancer. https://www.cancercare.org/copayfoundation	
34.	Cancer Thrift Store of Beaufort	The Cancer Thrift Store of Beaufort is a non-profit organization that supports those affected by cancer. They provide financial help for medical costs, support, and resources. https://www.cancerthriftstore.com/	Beaufort County cancer patients
35.	Child Abuse Prevention Association (CAPA)	CAPA Parenting classes, parent support group, adolescent pregnancy prevention and school-based education are offered in Beaufort County. Safe Sleep Education and mandated reporter serve Beaufort and Jasper Counties. The Open Arms Children’s Home for abused and neglected children serves Beaufort, Jasper, Colleton, Allendale, and Hampton Counties. http://capabeaufort.org	Beaufort, Jasper, Hampton, Colleton, and Allendale Counties
36.	Children’s Rehabilitative Services – South Carolina DHEC	Medical evaluation and treatment of children from birth to 17 years for conditions such as bone and joint diseases, hearing loss, cleft lip and palate, seizures, congenital heart conditions, spina bifida, cystic fibrosis, endocrine disorders, hemophilia, sickle cell disorder, developmental delays, kidney disease. This is statewide; must be a SC resident and US citizen. https://scdhec.gov/health/child-teen-health/services-children-special-health-care-needs/childrens-rehabilitative	Beaufort and Jasper Counties
37.	Chronic Disease Fund or Good Days	Co-payment assistance for pharmaceutical products for patients with private insurance or Medicare Part D. Patients who utilize a participating pharmacy can have their out of pocket expenses remitted by the fund directly to the pharmacy. Patients using non-participating pharmacies	Nationwide non-profit providing services to all qualifying patients

		can submit receipts for reimbursement. Breast cancer is covered. https://www.mygooddays.org/	
38.	Citizens Opposed to Domestic Abuse (CODA) now called Hopeful Horizons	Provides professional supportive services to victims of intimate partner abuse and their children. Conducts community education programs to confront the societal norms that condone abusive behavior. https://www.hopefulhorizons.org/our-story	Beaufort, Colleton, Hampton, and Jasper Counties
39.	Coalition for Aging in Place of Together for Beaufort County	The Coalition for Aging in Place strives to provide mature adults living in Beaufort County with a network of support that offers the practical means and confidence to enjoy life to its fullest in the homes and communities they value. http://seniorsresourcedirectory.com/community-services/	Beaufort County
40.	Coastal Empire Community Mental Health Center	Provides outpatient mental health assessment, counseling, crisis intervention, psychiatric treatment/therapy, and support services to adults, children, and their families who are affected by serious mental illnesses and significant emotional disorders. https://scdmh.net/cecmhc/	Beaufort, Allendale, Colleton, Hampton, and Jasper Counties
41.	Collaborative Organization of Services For Youth	Therapeutic treatment plan coordination for youth service agencies serving Beaufort County. https://www.bcgov.net/departments/community-services/human-services-alliance/COSY-homepage.php	Beaufort County
42.	Deep Well Project	Emergency assistance with food, rent, water and utility bills, household furnishings for families who suffer catastrophic loss, transportation, home repairs, medicine, clothing, childcare, and school supplies. http://www.deepwellproject.org	Anyone in need on Hilton Head Island, Beaufort County
43.	Disabilities Coalition	The mission of the Disabilities Coalition is to enhance the lives of persons with disabilities in Beaufort County by working together to provide, improve or expand needed services and opportunities for them and their families. http://www.disabilitiescoalition.org/	Beaufort County
44.	Dragon Boat Beaufort	Dragon Boat Beaufort was created by cancer survivors and is available to assist those in Beaufort County who are affected or have been affected by the disease. Dragon Boat helps with meal preparation and delivery, transportation to and from clinic appointments, daycare services during appointments, and cleaning services. Financial assistance is available in some cases. https://www.dragonboat-raceday.com	Beaufort County
45.	Emergency Shelter after Dark	Call to gain assistance for shelter after dark for individuals who are homeless. https://211lifeline.org/detail.php?id=15570257	Beaufort County
46.	Family Promise of Beaufort County	Transitional housing for families in a crisis such as job loss, unexpected illness, death in family, house fire, eviction, divorce, relocation, or other challenges. https://familypromisebeaufortcounty.org/	Beaufort County
47.	Family Services, Inc.	Provides financial management/protection of assets; manages day-to-day financial obligations for individuals who are on a fixed income; promotes home ownership for low and moderate income housing which includes first time homebuyers' workshops, credit analysis, reverse mortgage	State of South Carolina

		counseling, and default counseling; behavioral health services and Employee Assistance Programs. https://originsc.org/ https://www.guidestar.org/profile/57-0324920	
48.	Farmers' Markets	Locally grown produce is offered to residents, to encourage selecting healthy and nutritional foods. Many markets participate in the SNAP and WIC Farmers Market Nutrition program.	Beaufort and Jasper Counties
49.	Farm Worker Health Program	Beaufort Jasper Hampton Comprehensive Health Services Leroy E. Browne Medical Center on St. Helena Island is a federally funded program that provides medical, dental and social services. https://www.bjhchs.org/farm-worker-program/	Migrant and seasonal farm worker population in the Beaufort, Jasper and Hampton Counties
50.	Florence Crittenton Programs of SC	Residential program for single pregnant women and teens provides medical, educational, and counseling services. http://florencecrittentonsc.org	All single pregnant women and teens from across South Carolina
51.	Franciscan Center (St. Francis Center)	The Franciscan Center is a Diocese of Charleston outreach program to serve the poor and underserved residents. https://www.facebook.com/pages/category/Nonprofit-Organization/St-Francis-Center-on-St-Helena-Island-SC-174598323252010/	Beaufort County
52.	Fresh Start Healing Heart	An organization providing safe housing, immediate needs, case management and support to victims of commercial sexual exploitation and labor trafficking. Works to educate the community on human trafficking through materials, education sessions and fund raising. http://www.freshstarhealingheart.org	State of South Carolina
53.	Friends with Wheels	Provides transportation for medical appointments by appointment. https://uwlowcountry.org/community-directory/name/friends-with-wheels/	Hilton Head, Bluffton, occasionally Beaufort, Hardeeville, Okatie, Savannah, Charleston
54.	Good Neighbor Free Medical Clinic of Beaufort	Faith-based organization serving very low-income, uninsured adults to provide medical treatment and visits for health education, prescription assistance and pastoral care. Diagnostic tests, laboratory services and medications prescribed by the Clinic's health care providers are made available through Beaufort Memorial Hospital and pharmaceutical company patient assistance programs. http://gnfmcbeaufort.org/	Serves uninsured Beaufort County residents

55.	Greater Bluffton Jasper County Volunteers in Medicine	Medical clinic that provides medical care in a compassionate and professional manner to the uninsured of greater Bluffton and Jasper County. Volunteers in Medicine emphasize the use of retired medical professionals to provide quality healthcare services in two free clinics.	Bluffton in Beaufort County and Jasper County
56.	Gullah Church Nurses Association	Provides basic life support certification, conducts workshops in health education on diabetes, nutrition, HIV/AIDS, hypertension, breast cancer and other health related subjects. https://uwlowcountry.org/community-directory/name/gullah-church-nurses-association/	Beaufort and Jasper Counties (predominately African American churches)
57.	Healing Waters Mission and Wellness Center	Provides spiritual growth and development and life skills on health and safety. Assess and provide for social and health needs of the community with a food and clothes pantry. Provides free HIV counseling and testing. Assists with the free school out lunch program throughout the state. http://Healingwatersmission.com	Beaufort County
58.	HealthWell Foundation	The HealthWell Foundation reduces financial barriers to care for underinsured patients with chronic or life-threatening diseases. Offers assistance for the specific condition of breast cancer. https://www.healthwellfoundation.org/	Nationwide non-profit providing services to all qualifying patients
59.	Help of Beaufort	Provides emergency assistance, food, clothing and sometimes financial assistance. http://www.helpofbeaufort.org	Beaufort, Jasper, and Hampton Counties
60.	Hilton Head Regional Habitat for Humanity	Non-profit housing ministry for low to very low income families. Provides a 30-year mortgage at 0% interest for the cost of construction. http://habitatthi.org	Hilton Head, Bluffton, Ridgeland, Hardeeville
61.	Hopeful Horizons	24/7 rape crisis hotline, hospital/medical accompaniment, court accompaniment, counseling, forensic interview for alleged cases of child sexual and severe physical abuse. https://www.hopefulhorizons.org/our-story	Beaufort, Jasper, Hampton, Colleton, and Allendale Counties
62.	Jasper County Department of Social Services	Provides adult protective services, child protective services, family independence, food stamps, foster care services, foster home and group home licensing, referrals for child support, emergency financial services (utilities and medicine). https://dss.sc.gov/contact/jasper/	Jasper County
63.	KidFest	KidFest is a large one-day event held each spring to celebrate Child Abuse Prevention Month and Month of the Military Child. KidFest involves 60+ different community agencies and businesses and provides an opportunity for community families to learn about various services available in the Beaufort area. https://www.facebook.com/KidFest-Beaufort-588703834537417/ http://mykidfest.com/	Beaufort County
64.	Komen Lowcountry	Komen Lowcountry provides funding programs that support those in the fight to save lives and educate individuals about breast cancer risk factors, the importance of early detection and the resources that are available to help them. http://komenlowcountry.org/	Beaufort, Jasper, Hampton, and Colleton Counties

65.	LifeFit Wellness Center – Beaufort Memorial Hospital	Community fitness facility, LifeFit Wellness Center that focuses on disease management and prevention through a case management philosophy. Offers lab screenings and evaluation of risk factors, customized exercise program, group classes, access to a registered dietician and discounted prices for massage therapy and personal training. https://www.bmhsc.org/health-and-wellness/lifefit-wellness-center/	Residents of Beaufort County; scholarships are available
66.	Lions Club – Beaufort	A charitable organization that focuses on the visual needs of community residents. Provides financial assistance for eye glasses for low income local residents. Also provides eye screenings in local private and public schools from nursery through high school as well as at local health fairs. http://www.beaufortlionsclub.org	Beaufort
67.	Lowcountry Affordable Housing Coalition	The Lowcountry Affordable Housing Coalition is a group of governmental, non-profit, and private organizations working together to make housing more affordable for Lowcountry residents. https://www.bcgov.net/departments/Community-Services/human-services-alliance/how-to-get-involved.php	Beaufort, Colleton, Hampton, and Jasper Counties
68.	Lowcountry Area Coalition VITA	Formed with the assistance of the Internal Revenue Service to expand the single largest anti-poverty program offered by the federal government – VITA, the Volunteer Income Tax Assistance program. https://uwlowcountry.org/lowcountry-area-vita-coalition-helps-with-taxes/	Beaufort County
69.	Lowcountry Community Action Agency	Provides financial assistance for utility bills, medications, rent, mortgage, food, shelter. http://www.lowcountrycaa.org	Colleton and Hampton Counties
70.	Lowcountry Council of Governments	Provides caregiver support, information, education and services, offers information and referral assistance to seniors and caregivers, provides insurance counseling assistance and referral for elders. A service coordinator conducts new client intake and assessments for group dining meals, home delivered meals, and home care as well as coordination of services for eligible persons. http://www.lowcountrycog.org/	Beaufort, Jasper, Hampton, Colleton Counties
71.	Lowcountry Habitat for Humanity	Non-profit housing ministry for low to very low income families. Provides a 30-year mortgage at 0% interest for the cost of construction. https://lowcountryhabitat.org/	Beaufort, Jasper, Hampton, and Colleton Counties
72.	Lowcountry Regional Transportation Authority D.B.A. Palmetto Breeze	The Palmetto Breeze provides a wide variety of public transportation and contract services. The organization was formerly known as the Lowcountry Regional Transit Authority. https://palmettbreezetransit.com/wp/	Beaufort, Colleton, Hampton, and Jasper Counties
73.	Marine Corps Community Services	Information and referral, substance abuse programs, family counseling, child and spouse abuse reporting and case management. http://www.mccs-sc.com/index.shtml	Marine Corp services available to enlisted,

			veterans, and dependents
74.	Meals-on-Wheels	Provides a hot, mid-day meal 5 days per week. https://lowmow.net/	Beaufort County
75.	Med-I-Assist Program	A Patient Prescription Assistance Program designed to assist patients who have no prescription insurance coverage and are unable to afford their prescription medication. http://www.accesshealthlowcountry.org/med-i-assist.html	Beaufort and Jasper Counties
76.	Medical University of South Carolina College of Dental Medicine	Offers dental care at adjustable fees based on services provided by Dental Student Clinics, graduate Residency Clinics, and Dental Faculty Practices. https://muschealth.org/medical-services/dental	General Public
77.	Mental Health Access Coalition of Together for Beaufort County	In an effort to increase the availability and accessibility of mental health resources in our community, this group has defined two priorities: transportation and education. https://www.beaufortcountysc.gov/human-services/how-to-get-involved.html	Beaufort and Jasper Counties
78.	Mental Health America Beaufort/Jasper – Island House	Operates a psychiatric rehabilitation program which helps adults with severe and persistent illness work on the recovery goals of their choice. Program members work towards enhancing their psychological, social and living skills and moving towards a future of their choice. This is a Medicaid funded program that also provides limited scholarship slots and a private pay option. https://mhaislandhouse.com/	Beaufort and Jasper Counties
79.	Mobile Wellness Unit – Beaufort Memorial Hospital	The Mobile Wellness Unit is a 40-foot healthcare mobile unit that provides free and low cost screenings and some immunizations to neighborhoods, businesses, schools, churches, senior citizen centers, and other organizations. Also provides free skin cancer screenings, free clinical breast exams, and low cost prostate cancer screenings. https://www.bmhsc.org/health-and-wellness/for-the-community/mobile-wellness-unit	Beaufort and Jasper Counties
80.	Morris Village Alcohol and Drug Addiction Treatment Center	A state-run facility that provides inpatient substance abuse treatment services to chemically dependent adults struggling with addiction and co-occurring mental health disorders. https://www.rehabs.com/listings/morris-village-alcohol-and-drug-addiction-treatment-center-3563155374/ http://www.state.sc.us/dmh/morrisvillage/	State of South Carolina
81.	National Alliance on Mental Illness (NAMI)	Free education courses and support groups for individuals with mental illness, and for their families and caregivers. Community outreach programs include free Crisis Intervention Training for law enforcement; free mental health education programs including Parents and Teachers as Allies (for public and private schools); and in Our Own Voice presentations by people who have experienced mental illness.	Beaufort County

		https://namilowcountry.org/	
82.	Neighborhood Outreach Connection	Focuses on low income families from all major ethnic groups. Identifies distressed neighborhoods and offers assistance and encouragement to struggling individuals and families in low income neighborhoods with education, healthcare, and workforce development. http://www.noc-sc.org/	Beaufort County
83.	New Life Center Commission on Alcohol & Other Drug Abuse	Outpatient treatment for addictions, prevention programs, adolescent counseling, red ribbon campaign, employee assistance programs. https://uwlowcountry.org/community-directory/name/new-life-center-commission-on-alcohol-other-drug-abuse/	Jasper and Hampton Counties, South Carolina and active duty military
84.	Office of Early Childhood, Parenting & Family Literacy	Provides parent education, early childhood services and Parents as Teachers home visitation programs. Parent Information and Resource Centers provide adult literacy, child assessments, interagency collaboration, and case management for parents of young children. https://uwlowcountry.org/community-directory/name/office-of-early-childhood-parenting-family-literacy/	Beaufort County
85.	Office of Ocean and Coastal Resource Management – SC DHEC	Environmental engineer handles storm water, waste water and water supply permits. Regulates development in eight coastal counties, dock permits, erosion control devices, and all Atlantic Ocean development. https://www.scdhec.gov/environment/your-water-coast/ocean-coastal-management-ocrm	Beaufort, Jasper and Colleton Counties
86.	Partnership for Adult Literacy	Work group focused on increasing enrollment in adult education and literacy programs. https://www.beaufortcountysc.gov/human-services/how-to-get-involved.html	Beaufort County
87.	Partnership for Prescription Assistance (PPA)	Partnership for Prescription Assistance offers a single point of access to more than 475 public and private patient assistance programs, including more than 150 programs offered by pharmaceutical companies. https://www.aafp.org/about/initiatives/prescription-assistance.html	Nationwide non-profit providing services to all qualifying patients
88.	PASOs Family and Community Health Programs	Helps the Latino community and service providers work together for strong and healthy families. This is done through education, support, and grassroots leadership development. http://www.scpasos.org/low-country/	Beaufort and Jasper Counties
89.	Patient Access Network (PAN) Foundation	Assists patients who cannot access the treatments they need due to out-of-pocket health care costs including deductibles, co-payments, and co-insurance. Offers assistance for breast cancer. https://panfoundation.org/index.php/en/	Nationwide non-profit providing services to all qualifying patients
90.	Patient Advocate Foundation's Co-Pay Relief Program	Provides direct co-payment assistance for pharmaceutical products to insured patients (including Medicare Part D beneficiaries) who financially and medically qualify. Includes assistance for breast cancer. https://www.copays.org/	Nationwide non-profit providing services to all qualifying patients
91.	Penn Center – Program for	The PACE program fosters youth development programs for Sea Island children ages 14 months – 17 years. Instruction focuses on education,	Beaufort County

Academic and Cultural Enrichment (PACE)	social, environmental and cultural development and enrichment. Also provides tutoring for 4 th through 8 th grade students. http://www.penncenter.com/community-members	
92. Physical Activity Resources	Locally owned organizations that offer fitness equipment and programs include Anytime Fitness, City Fit, Earth Fit, the LifeFit Wellness Center, Planet Fitness, the Omni, and the YMCA of Beaufort County. The YMCA also serves families. Walking trails are available at several locations in Beaufort County, including the Spanish Moss Trail, and one on the BMH campus. Recently, a pedestrian area was included on the new McTeer Memorial Bridge that crosses the Intercostal waterway.	Residents of northern Beaufort County (service area of Beaufort Memorial Hospital)
93. Pink Fund	The Pink Fund is a public charity that distributes short-term financial aid for basic living expenses on behalf of breast cancer patients who have lost all or a part of their income during active treatment. Payments are made directly to the patient's creditors. https://www.pinkfund.org/	Nationwide non-profit providing services to breast cancer qualifying patients
94. Pregnancy Center and Clinic of the Low Country	Free and low cost services for prenatal care up to 16 weeks, testing for pregnancy and sexually transmitted diseases, guidance, education, support and parenting classes, infant equipment. http://www.pregnancycenterhhi.org	Beaufort and Jasper Counties
95. Radiance Women's Center	The Radiance Women's Center is a non-profit pregnancy care center offering free pregnancy testing, options counseling, limited ultrasounds, STI testing, referrals, abortion recovery, and pregnancy and parenting classes. https://radiancewomenscenter.com/	Women of Beaufort and Jasper Counties
96. St. Francis Center	Assistance with utilities, medicine, emergency home repair, migrant outreach, food assistance. https://www.facebook.com/pages/category/Nonprofit-Organization/St-Francis-Center-on-St-Helena-Island-SC-174598323252010/	Beaufort County
97. Salvation Army – Emergency Financial Assistance Program	Assists residents with rent/mortgage, lodging, utilities, food and those who have experienced a house fire. https://uwlowlowcountry.org/community-directory/name/the-salvation-army-the-emergency-financial-assistance-program/	Beaufort, Jasper, Hampton Counties
98. Second Helpings	Non-profit agency that collects surplus food from grocery and other stores and distributes it the same day to agencies who serve the needy. The Food Network serves Hilton Head, Bluffton and Beaufort. http://secondhelpingslc.org/	Helps agencies serve the Lowcountry of South Carolina
99. Senior Services of Beaufort County	Home delivered meals, transportation, group dining, homemaker services, and health wellness programs. http://www.seniorservicesofbeaufort.org	Beaufort County
100. Share Our Suzy	Provides a bridge for the financial gap from diagnosis to remission of breast cancer. Funds are available to provide assistance with wigs, prosthetics, childcare, gas cards, utility bill assistance, medication assistance and more.	South Carolina

		http://www.soslowcountry.org/	
101.	Sheldon Township Community Support Partnership	Grassroots coalition formed in 1998 by BMH and SC DHEC Lowcountry region to address educational and economic diversities in the Sheldon Township of northern Beaufort County. This group has received numerous grants which have funded educational resources, leadership development, and health promotion in local area churches. The group was instrumental in facilitating a bond issue leading to a new high school with access to free technical college courses, healthcare for local students, the establishment of a local library branch, and an expansion of a Head Start facility.	Residents of Sheldon Township, northern Beaufort County (Census Tract #1)
102.	Sisters Network Inc.	A national African American breast cancer survivorship organization that provides financial assistance to breast cancer survivors while undergoing radiation or chemotherapy treatment. Assistance includes utility bills, medical bills, rent, and mortgage. https://www.sistersnetworkinc.org/	Nationwide non-profit providing services to all qualifying breast cancer patients
103.	South Carolina 2-1-1	Resource for finding assistance in local communities. 2-1-1 keeps a database of a wide variety of service providers including support groups, community clinics, counselors, shelters, food pantries, programs for seniors, and many more agencies in South Carolina. 2-1-1 can be called anytime, 24 hours a day, 365 days a year to link to vital services in the community. They can also be reached toll free at 1-866-892-9211. The service is free and available in multiple languages. https://sc211.org/ (and) http://www.211.org/	State of South Carolina
104.	South Carolina Department of Natural Resources	Hunter education program provides training on the responsibility and ethics in the field, as well as firearms safety. Oversees the conservation efforts of the South Carolina state government. http://www.dnr.sc.gov/	State of South Carolina
105.	South Carolina Office of Victim Assistance	Helps with filing for compensation fund, advocacy and support, referrals, training and technical assistance. Benefits can be paid up to \$15,000 for medical costs, counseling costs, lost wages or loss of support, burial/funeral costs. Crime must have cause physical injury or emotional trauma; victim must not have been engaged in illegal activity http://sova.sc.gov/ https://scaccess.communityos.org/zf/profile/program/id/79792	State of South Carolina
106.	South Carolina Vocational Rehabilitation Department	Vocational assessment and counseling. Helps those with disabilities prepare for, achieve, and maintain employment. https://scvrd.net/	State of South Carolina
107.	Spanish Moss Trail	The Spanish Moss Trail is a rails-to-trail greenway project owned by Beaufort County, SC and located in the heart of northern Beaufort County. Beaufort Memorial has partnered with the City of Beaufort to provide the trail for walking, biking, and jogging. The BMH Board dedicated a portion of hospital property to the City as the path provides a health-related community benefit, especially as it will eventually connect the existing wellness trail on the Hospital's main campus to the Spanish Moss Trail. http://www.spanishmosstrail.com/home	General Public

108.	SC Seat Belt Law	<p>“Buckle Up South Carolina.” Under the law, a law enforcement officer has the authority to stop a driver if the officer has a clear and unobstructed view of a driver or occupant of a motor vehicle not wearing a safety belt or not secured in a child restraint system.</p> <p>https://scdps.sc.gov/buckleupsc</p>	State of South Carolina
109.	Stork’s Nest Program	<p>A collaborative project of Zeta Phi Beta Sorority, March of Dimes, and Beaufort Memorial Hospital to improve the health of babies by preventing birth defects and infant mortality through research, community service, education, and advocacy. This incentive program encourages pregnant women to participate in prenatal education and receive regular prenatal care to earn points that can be spent on baby items.</p> <p>https://www.facebook.com/storksnest.beaufort/ and https://mupizeta.com/storks-nest</p>	Beaufort County
110.	United Way of Lowcountry (UWL) Directory & Helpline	<p>An online directory of community resources, including assistance for healthcare and transportation. Works to be the leading force for social change to improve basic needs, education, health and financial stability outcomes. UWL maintains a Helpline to connect citizens with a network of resources and services in the Lowcountry.</p> <p>https://uwlowcountry.org/community-directory/name/united-way-of-the-lowcountry-helpline/</p>	Beaufort and Jasper Counties
111.	Urgent Care Centers	<p>Private, franchised care centers that offer immediate care services for minor illnesses and injuries and some lab/imaging services. Many operate seven days a week.</p> <p>Beaufort Memorial Hospital operates three Express Care clinics- in Beaufort, Okatie and Bluffton. These clinics are open daily and provide immediate care for individuals who can’t visit their regular healthcare provider or who may not have a healthcare provider.</p> <p>https://www.bmhsc.org/services/immediate-care-options/express-care/</p>	Beaufort and Jasper Counties
112.	Volunteers in Medicine- Hilton Head Island	<p>Free medical clinic that provides free and low cost medical, dental and mental health services to families and individuals who otherwise have no access to quality-driven healthcare. Services include immunizations, physical exams, general medicine, dental care and a wide variety of specialized services.</p> <p>https://vimclinic.org/</p>	Men, women and children who live or work on Hilton Head Island and Daufuskie Island in Beaufort County. (Also known as VIM Hilton Head)
113.	Water Quality Coalition	<p>This local work group, pulled together by the Beaufort Soil and Water Conservation District, involves numerous stakeholders in water quality issues both governmental and non-governmental who collaborate on problems and solutions. The collaboration has led to developing the Intergovernmental Agreement Plan, the Storm-water Implementation Committee, and the County and Municipality Water Quality Monitoring Committee.</p>	Beaufort County

<https://www.beaufortcountysc.gov/human-services/how-to-get-involved.html>

Source: United Way of the Lowcountry, Beaufort Memorial Hospital, Beaufort County Government, 2019.

BMH’s commitment to being an authentic community-based hospital is reflected through the leadership and support it provides to community initiatives which foster the health and wellness of its service area and the larger community. This commitment includes supporting the local government and local wellness coalitions in their efforts to impact the health and wellness of the community, particularly with respect to social issues which the hospital is not in a position to directly impact. Table 11 lists the needs that were identified through the quantitative and qualitative sections of the CHNA. As required, indication is provided as to whether a need is being “addressed” or “not addressed” by BMH. The third, and last column, inventories the resources currently addressing the need. The numbers in parentheses correspond to the resource inventory provided in Table 10.

Table 11: Identification of Needs, BMH Involvement, & Resources Addressing Need

Identified Need	Addressed/Not Addressed by Hospital	Explanation of Addressed/Unaddressed Need (Item Number in Resource Inventory)
Chronic Diseases	Addressing	Beaufort Memorial Hospital CHiP Wellness Van (79) Beaufort Memorial Hospital LifeFit Wellness Services (65) Beaufort Memorial Hospital Bridge to Home Transitional Care Program (30) Better Choices, Better Health (26) BMH Care Anywhere (28) Greater Bluffton & Jasper County Volunteers in Medicine (55) Gullah Church Nurses Association (56) Physical Activity Resources (92) Sheldon Township Community Support Partnership (101)
Obesity	Addressing	Beaufort Memorial Hospital LifeFit Wellness Center (65) Beaufort Memorial Hospital Bridge to Home Transitional Care Program (30) Farmers’ Markets (48) Physical Activity Resources (92)
Access to Medical Care	Addressing	AccessHealth Lowcountry (3) Beaufort County Health Department, SC DHEC Lowcountry Region (18) Note: Provide similar services in Jasper & Hampton Counties Beaufort Jasper Hampton Comprehensive Health Services (23) Beaufort Memorial Hospital CHiP Mobile Wellness Van (79) Beaufort Memorial Hospital Express Care Centers (111) Beaufort Memorial Hospital Transitional Care Program (30) BMH Care Anywhere (28) Good Neighbor Free Medical Clinic of Beaufort (54) Greater Bluffton & Jasper County Volunteers in Medicine Clinics (55) Med-I-Assist Program (75) Palmetto Breeze (72) The Farm Worker Health Program (49) United Way of the Lowcountry Helpline (110) Urgent Care Centers/Express Care Clinics (111) Volunteers in Medicine Hilton Head (112)
Prenatal Care	Addressing	Adequacy of Prenatal Care Coalition (4)

(infant death, teen pregnancy, all pregnancy areas)		<p>Beaufort County Health Department, SC DHEC Lowcountry Region (18)</p> <p>Beaufort Jasper Hampton Comprehensive Health Services, Inc. (23)</p> <p>Beaufort Jasper Economic Opportunity Commission (22)</p> <p>Radiance Women’s Center (95)</p> <p>Child Abuse Prevention Association (35)</p> <p>Florence Crittenton Programs of SC (50)</p> <p>PASOs Family & Community Health Programs (88)</p> <p>Pregnancy Center & Clinic of the Low Country (94)</p> <p>Stork’s Nest Program (109)</p>
Substance Abuse and Mental Health (tobacco, alcohol, drugs)	Addressing (on outpatient basis)	<p>Al-Anon Family Group (6)</p> <p>Alcoholics Anonymous (7)</p> <p>Beaufort County Alcohol and Drug Abuse Department (13)</p> <p>Beaufort County Youth Conference (20)</p> <p>Beaufort Memorial Hospital LifeFit Wellness Services (65)</p> <p>Coastal Empire Community Mental Health Center (40)</p> <p>Collaborative Organization of Services for Youth (41)</p> <p>Morris Village Alcohol and Drug Addiction Treatment Center (80)</p> <p>Mental Health Access Coalition (77)</p> <p>New Life Center Commission on Alcohol & Other Drug Abuse (83)</p> <p>Behavioral Health Branch, Marine Corp Community Services (73)</p>
Violence (child abuse, domestic violence, rape, youth violence, violent behavior)	Not Addressing	<p>Beaufort County Department of Social Services (14)</p> <p>Beaufort County Early Childhood Coalition (16)</p> <p>AMIKids (10)</p> <p>Child Abuse Prevention Association (35)</p> <p>Citizens Opposed to Domestic Abuse now DBA Hopeful Horizons (38)</p> <p>Hope Haven of the Lowcountry now DBA Hopeful Horizons (61)</p> <p>Jasper County Department of Social Services (62)</p> <p>KidFest (63)</p> <p>Marine Corps Community Services, Behavioral Health Branch (73)</p> <p>Penn Center – Early Intervention Program (91)</p>
Injury (firearm, suicide, distracted driving, seat belts, car accidents)	Not Addressing	<p>Beaufort and Jasper Counties Sheriffs’ Offices (12)</p> <p>South Carolina Department of Natural Resources (104)</p> <p>South Carolina Office of Victim Assistance (105)</p> <p>State Seat Belt Law (108)</p>
Poverty (homelessness, unemployment, dropping out of school)	Not Addressing	<p>Beaufort County Early Childhood Coalition (16)</p> <p>Beaufort Housing Authority (21)</p> <p>Beaufort Jasper Economic Opportunity Commission (22)</p> <p>AMIKids (10)</p> <p>Bluffton Self Help Inc. (27)</p> <p>Deep Well Project (42)</p> <p>Emergency Shelter after Dark (45)</p> <p>Family Promise (46)</p> <p>Help of Beaufort (59)</p> <p>Lowcountry Area Coalition –VITA (68)</p> <p>Neighborhood Outreach Connection (82)</p> <p>Partnership for Adult Literacy (86)</p> <p>Second Helpings (98)</p> <p>The Coalition for Aging in Place (39)</p>

Infectious Disease (STDs, HIV/AIDs, Immunizations)	Addressing	Access Network (2) Beaufort County Health Department, SC DHEC Lowcountry Region (18) Beaufort Jasper Hampton Comprehensive Health Services (23) Beaufort Memorial Hospital Mobile Wellness (79) Greater Bluffton Jasper County Volunteers in Medicine Clinics () Gullah Church Nurses Association (56) Med-I-Assist (75) Volunteers In Medicine Hilton Head (114)
Dental (access, not going to the dentist)	Addressing	AccessHealth Lowcountry (3) Beaufort Jasper Hampton Comprehensive Health Services (23) Good Neighbor Free Medical Clinic of Beaufort (54) Greater Bluffton & Jasper County Volunteers in Medicine Clinic (55) Medical University of South Carolina College of Dental Medicine (76) The Farm Worker Health Program (49) Volunteers In Medicine Hilton Head Island (112)

Sources

Beaufort County, Beaufort County Human Services Alliance, *Together for Beaufort 2006-2009 Beaufort County, South Carolina*

Beaufort Memorial Hospital 2019 Community Health Needs Assessment

Beaufort Memorial Hospital, Physician Staff List

Coastal Carolina Hospital and Hilton Head Regional Healthcare, Directory of Physicians and Services.

Lowcountry Council of Governments, Lowcountry Economic Development District Comprehensive Economic Development Strategy 2022

National KIDS COUNT Program, Children’s Trust of South Carolina 2017

S.C. Department of Health and Environmental Control, S.C. Public Health Data 2022

S.C. Office of Revenue and Fiscal Affairs, Health & Demographics Section 2022

State of Childhood Obesity <https://stateofchildhoodobesity.org/>

United Health Foundation *America’s Health Rankings 2021*

United Way of the Lowcountry. Retrieved from <https://uwlowcountry.org>.

University of Wisconsin Population Health Institute with support by Robert Wood Johnson Foundation, County Health Rankings and Roadmaps. Retrieved from <http://www.countyhealthrankings.org>.

Contributors

Amber Williams, CRCA, Patient Financial Services Manager, Beaufort Memorial Hospital

Ashton Viterbo, MS, ATC, Corporate Health Consultant, Beaufort Memorial Hospital

Ben Boswell, Administrative Manager, Beaufort County Human Services Department, Beaufort County Government

Betsy A. Sears, PT, DPT, Physical Therapist, Center Coordinator for Clinical Experience, Beaufort Memorial Outpatient Rehabilitation

Carrie Confare, LBSW, Director Care Coordination, Beaufort Memorial Hospital

Christopher Ketchie, MHA, Vice President of Physician Services

Cindy Gibson, Director of Finance, Beaufort Memorial Hospital

David Purser, MS, Manager, Lifefit/Cardiopulmonary Rehab, Beaufort Memorial Hospital

Deidre Robinson, Department Director Marketing and Communications, Beaufort Memorial Hospital

Faith Polkey, MD MPH, FAAP, Chief Clinical Officer, Beaufort Jasper Hampton Comprehensive Health Services, Inc., Regional Director of Medical Education, A. T. Still University School of Osteopathic Medicine in Arizona, Board of Trustees, Beaufort Memorial Hospital

Fred Leyda, Director, Beaufort County Human Services Department, Beaufort County Government

Jason Meyer, Senior Mobile Wellness Specialist, Community Health Improvement Program, Beaufort Memorial Hospital

Jesse Ausec, Occupational Therapist, Beaufort Memorial Hospital

Jessica Egan, Director, AccessHealth Lowcountry, Beaufort Memorial Hospital

Jonathan Lohr, CSM, EHealth Technical Analyst, Digital Health innovations, Beaufort Memorial Hospital

Kevin Kremer, RN, BSN, CEN, Director Emergency Department, Beaufort Memorial Hospital

Kimberly H. Yawn, MS, Associate Vice President and Chief Development Officer, Beaufort Memorial Hospital

Matthew Hurtt, PACS Administrator, Beaufort Memorial Hospital

Megan Mack, OTR/L, MSHA, FACHE, Rehab Director, Beaufort Memorial Hospital

Paula T. Creech, CT Manager, Beaufort Memorial Hospital

Robert "David" Anderson, MSN, Clinical IS Analyst, Beaufort Memorial Hospital

Roxanne J. Davis-Cote, MPH, RD, LD, CNSC, Clinical Nutrition Manager, Beaufort Memorial Hospital

Russell Baxley, MHA, President and CEO, Beaufort Memorial Hospital

Sandra J. Perks, LISW-CP, CCM, CRC, Manager, Outpatient Care Management, Beaufort Memorial Hospital

Steve Donaldson, LAC, MAC, CACII, Director, Beaufort County Alcohol and Drug Abuse Department

Tiffany Washington, RN, Department Director Birthing Center, Beaufort Memorial Hospital

Victoria Viventi, Community & Corporate Health Manager, Beaufort Memorial Hospital