



# Beaufort Memorial

Community Health Needs Assessment  
September 2019

# TABLE OF CONTENTS

EXECUTIVE SUMMARY.....	PAGE 3
Overview, Service Area, Demographics	
Health Status & System Responsiveness	
Concluding Comments	
2019 COMMUNITY HEALTH NEEDS ASSESSMENT.....	PAGE 6
Introduction	
Beaufort Memorial Hospital Service Area, Map 1	
2019-2022 IMPLEMENTATION STRATEGY .....	PAGE 7
DEMOGRAPHIC OVERVIEW.....	PAGE 11
Population, Tables 1-4	
Economics, Tables 5-7	
COMMUNITY & PUBLIC HEALTH INVOLVEMENT.....	PAGE 15
Community Input – Together for Beaufort County	
Human Services Alliance Organizational Chart, Figure 1, Table 8	
Community Input – Office of Research and Statistics	
Child & Adolescent Mortality Data, Tables 9-11	
Adult Morbidity, Tables 12	
Adult Mortality, Tables 13	
Cancer & Heart Disease Deaths, Tables 14-15	
BEAUFORT Physician Resources .....	PAGE 22
Table 16, Graph 1	
Summary	
SURVEY ASSESSMENT PROCESS & METHODOLOGY.....	PAGE 24
Community Health Needs Survey	
Table 17, Graph 2	
Focus Group	
Prioritization of Health Needs Table 18	
Results	
2016 COMMUNITY HEALTH NEEDS ASSESSMENT UPDATE.....	PAGE 31
Strategy 1	
Strategy 2	
Strategy 3	
COMMUNITY HEALTH RESOURCE INVENTORY.....	PAGE 44
Table 19	
Identification of Needs, BMH Involvement, & Resources Addressing Need, Table 20	
INFORMATION SOURCES.....	PAGE 60
CHNA WORK GROUP/CONTRIBUTORS.....	PAGE 61

# List of Tables

TABLE 1	Population for Beaufort, Jasper & Hampton Counties	PAGE 12
TABLE 2	Race and Ethnicity in Beaufort County	PAGE 12
TABLE 3	Population by Age for Beaufort County	PAGE 12
TABLE 4	Population by Age Category for Beaufort County and South Carolina	PAGE 13
TABLE 5	Summary of Demographics & Economic Indicators	PAGE 14
TABLE 6	Changes in Demographic and Economic Indicators	PAGE 14
TABLE 7	Selected Poverty Statistics for Beaufort County and SC	PAGE 14
TABLE 8	Together for Beaufort County Coalitions	PAGE 16
TABLE 9	Infant Mortality Rate per 1000 Live Births	PAGE 18
TABLE 10	Percent of Babies Born with Less than Adequate Prenatal Care	PAGE 18
TABLE 11	Deaths by Accident in Beaufort County	PAGE 18
TABLE 12	Selected Morbidity Data	PAGE 19
TABLE 13	Causes of Death All Ages	PAGE 20
TABLE 14	Cancer Deaths in Beaufort County	PAGE 20
TABLE 15	Heart Disease Deaths in Beaufort County	PAGE 21
TABLE 16	Physician Hospital Affiliation by Specialty	PAGE 23
TABLE 17	Community Health Needs Respondents by Zip Code	PAGE 26
TABLE 18	Prioritization of Health Needs	PAGE 29
TABLE 19	Community Health Resource Inventory	PAGE 45
TABLE 20	Identification of Needs, BMH Involvement, and Resources	PAGE 59



## BEAUFORT MEMORIAL HOSPITAL

### Our Mission:

To deliver superior health care services to our patients and to improve the health of our community.

# Executive Summary

---

## Overview

Beaufort Memorial Hospital (BMH) is a 197 bed not-for-profit community hospital located in Beaufort, South Carolina and the largest hospital between Charleston, South Carolina and Savannah, Georgia. Beaufort is the second oldest city in South Carolina and is among the fastest growing areas of the state. It is part of the economic, cultural, and recreational hub of a large, growing region that encompasses parts of the Georgia and South Carolina coasts. It is located 75 miles south of Charleston, South Carolina, 55 miles north of Savannah, Georgia, and 40 miles from Hilton Head Island, South Carolina.

The hospital, established as a quasi-governmental agency in May 1944 with 25 beds, was the first hospital in the area. It is currently celebrating its 75<sup>th</sup> anniversary. Over time it has grown to encompass a medical staff of over 230 board-certified or board-eligible providers, a 14-bed inpatient psychiatric unit, a 14-bed acute inpatient rehabilitation unit, a Level 2 nursery, a 26 bed Emergency Department with 2 trauma rooms, and a full service cancer center offering chemotherapy, infusion services and radiation with the region's newest True Beam linear accelerator. Beaufort Memorial Hospital is accredited by the Joint Commission, and its cardiovascular and cancer services were developed in affiliation with Duke Medicine, which helped bring the latest technology and clinical trial involvement to the region's Lowcountry residents. Most recently, the Keyserling Cancer Center was reaccredited by the American College of Surgeons Commission on Cancer. As of July 2016, BMH's clinical affiliation with Duke Medicine was discontinued with the initiation of a clinical affiliation agreement with the Medical University of South Carolina (MUSC).

In addition to earning the Gold Seal of Approval from The Joint Commission for the Accreditation of Healthcare Organizations, we are proud to be recognized for quality and safety as demonstrated by:

- The Joint Commission's Chest Pain Center Certification
- The Joint Commission's Primary Stroke Center Advanced Certification
- American College of Surgeons Commission on Cancer Accreditation for the Keyserling Cancer Center
- American College of Radiology Designated Lung Cancer Screening Center
- National Comprehensive Breast Care Certification for the Breast Health Center
- American College of Radiology Breast Imaging Center of Excellence
- The Joint Commission's disease specific certification for total hip and knee replacements
- Blue Cross and Blue Shield's disease specific certification for obstetrical care

## Service Area

Over 85% of Beaufort Memorial Hospital's patients reside in Beaufort County, and 56% of them predominantly in northern Beaufort County which includes four zip codes contiguous to the hospital. Patient origin data reflects the importance of BMH to its surrounding rural communities. Although Jasper and Hampton counties are not a major source of patients for BMH, a significant percentage of hospitalizations from these areas are at BMH. (The hospital acquired a primary care clinic in Hampton County, Harrison Peeples, in 2014.) The military has a significant presence with the Marine Corps Recruit Depot, the Marine Corps Air Station, the Naval Hospital Beaufort and a significant veteran population. The hospital has delivered babies for military families for more than two decades. Care is also provided for military personnel from The Marine Corps Recruit Depot and the Marine Corps Air Station due to some downsizing of the Naval Hospital Beaufort. As a major tourist destination, vacationers and out-of-state residents are also a source of patients.

## Demographics

Beaufort County continues to be ranked as one of the healthiest counties in South Carolina. However, both its demographics and health status indicators are heavily influenced by affluent and healthy retirees that reside in Bluffton or Hilton Head, 25 miles south of the Broad River. Population projections suggest that Beaufort County experienced over 16% growth since 2010. Growth occurred across all minor civil divisions and most age categories. Geographically growth was greatest in Bluffton (76.9%) and the Town of Port Royal (22.7%); age-wise, it was in the 65 and older cohort, which continues to comprise nearly a quarter of the county's population. The City of Beaufort also grew 8.2%, reversing the population decline that occurred between 2000 and 2010. Median household income rose among all areas except in Port Royal, where income declined slightly (-0.3%). Poverty in the City of Beaufort rose slightly (19% to 19.3%). Poverty also grew slightly within Port Royal, from nearly 15% to 16% of the town's population. This growth in indigence is particularly concerning since BMH draws heavily from these areas for its emergency room and inpatient populations. Lastly, there continues to be strong growth in the retirement aged. In Fiscal Year 2018 48% of the hospital's reimbursement was from Medicare.

## Health Status and System Responsiveness

Statistically, Beaufort County ranks well on health outcomes when compared to other South Carolina counties. Overall, its residents report themselves as healthier and happier, and we achieved some of the national benchmarks in these indicators. Strides have been made in improving the percentages of women receiving adequate prenatal care and reducing infant mortality. Despite improvement in health disparities, the percentage of low-birth weight babies and infant mortality continue to be double or greater for African Americans.

Although Beaufort County has achieved top rankings in health outcomes and health factors and has a resident population that makes use of preventive health measures, there are very definitive areas of concern where intervention is needed to circumvent continued increases in morbidity and potential increases in mortality, especially from preventable causes. Prevention, early detection, and intervention, keystones of public health, will continue to be vital components of the health care system in order to achieve reductions in costs, morbidity, and mortality.

Over the decades, BMH has grown in its capacity and in the complement of services available to the community. Physician recruitment and additions to service line offerings have been important additions to meeting the needs of a growing and aging population. As new technology and procedures have become safe and available, BMH has pursued these offerings, permitting its residents to obtain a more comprehensive level of care close to home and family. However, shifts in market share have been occurring, and BMH has not been as well positioned geographically to capitalize on the growth occurring south of the Broad River. Currently the construction of a medical office with many hospital services including a cancer center in the Okatie area along

with the addition in FY 2019 of an Express Care Clinic and Primary Care Clinic in the Bluffton area will assist in offerings for residents south of the Broad River area as well as for those in Jasper County. This will continue to be an important market and much needed to help offset the charitable costs outlaid as the county's only not-for-profit community hospital.

## Concluding Comments

The future adequacy of a cost-effective health care delivery system within the City of Beaufort and its immediate areas lies largely within the purview of Beaufort Memorial Hospital. With continued growth of poverty and uninsured, shifts and reductions in reimbursement at both the Federal and State levels, and a constrained supply of primary care providers, staying steady at the helm will be a challenge for BMH. The availability of telehealth, ongoing recruitment of providers, a new medical office building with cancer center under construction in the middle of the county, and the addition of an Express Care Clinic on the hospital campus are all beneficial resources for residents of both Beaufort and Jasper Counties. A second Express Care Clinic and a Primary Care Clinic opened in Bluffton (mid-county) in September 2019. In keeping with health care challenges, the strategies and implementation plan which evolved from this assessment process attempts to balance the community's identified priorities with endeavors that are fiscally sound and in keeping with BMH's strong stewardship within Beaufort County. The depth and breadth of BMH's involvement in community coalitions positions it well to continue to affect change at all levels. With public health's growing focus on "population health management," BMH's leadership will continue to be called upon, and its position of importance as a resource to the Lowcountry's array of health and human service agencies will likely provide ample opportunities for BMH to fulfill its mission.

## Implementation Strategies

The cost of health care, behavioral health issues and chronic disease were the three areas identified as priorities by the Beaufort County, Jasper County and Hampton County communities in the 2019 Community Health Needs Assessment. Identification of these priorities was based on results from the community health needs survey and focus group. The strategies identify the means through which the hospital plan to address needs that are consistent with the hospital's charitable mission, as part of its community benefit programs. The hospital anticipates health needs and resources may change, and thus a flexible approach was adopted in the development of its strategies.

The three strategies developed to address the priorities are:

Strategy 1: Beaufort Memorial Hospital will support initiatives to address health care costs.

Strategy 2: Beaufort Memorial Hospital will partner with other community organizations to provide programs that address alcohol, drug and mental health issues.

Strategy 3: Beaufort Memorial Hospital will continue to address chronic disease management.

# 2019 Community Health Needs Assessment

## Introduction

Beaufort Memorial Hospital (BMH) is a 197-bed non-profit community hospital located in Beaufort, South Carolina and the largest hospital between Charleston, South Carolina and Savannah, Georgia. The hospital, established in May 1944 with 25 beds, was the first hospital in the area. Over time it has grown to encompass a medical staff of more than 230 board certified or board-eligible physicians, a 14-bed inpatient psychiatric unit, a 14-bed rehabilitation unit, a full-service cancer center offering chemotherapy, infusion services, and radiation therapy with the region's newest True Beam linear accelerator. Beaufort Memorial Hospital is accredited by The Joint Commission, and its cardiovascular and cancer services were developed under an affiliation with Duke Medicine, which helped bring the latest technology and clinical trial involvement to the region's Lowcountry residents. Most recently, the Keyserling Cancer Center was reaccredited by the American College of Surgeons Commission on Cancer. As of July 2016, BMH's clinical affiliation with Duke Medicine was discontinued with the initiation of an affiliation agreement with the Medical University of South Carolina (MUSC) in Charleston, South Carolina. In December 2017 easier access became available to health care providers with the initiation of *BMH Care Anywhere* telemedicine online appointments. In 2018 the hospital added an Express Care and Occupational Health Clinic located adjacent to the hospital campus. In May 2019 the construction began of a new medical office in Okatie (middle of Beaufort County) which will offer residents a variety of medical services and specialties, including medical practices and a second cancer center.

As with any Community Health Needs Assessment (CHNA), the characteristics of the population to be served provide the parameters for the complement of services that are needed to best meet the health and wellness requirements of the community. The cross-functional team, initially established by BMH to ensure that a broad spectrum of stakeholders was represented, continued to provide oversight for this 2019 CHNA update. The team included representatives from the hospital's LifeFit Community Health Department, the South Carolina Department of Health and Environmental Control, the hospital's Food and Nutrition Services Department and AccessHealth Lowcountry.

This assessment will review current sociodemographic data, pertinent public health statistics, including morbidity and mortality data, and lastly, discuss the results of a recent survey and a focus group that addressed the public's perception of the community's health needs. It will conclude with the identification of specific goals and strategies for BMH to undertake in ensuring it is responsive to the needs of its community.

## Beaufort Memorial Hospital Service Area

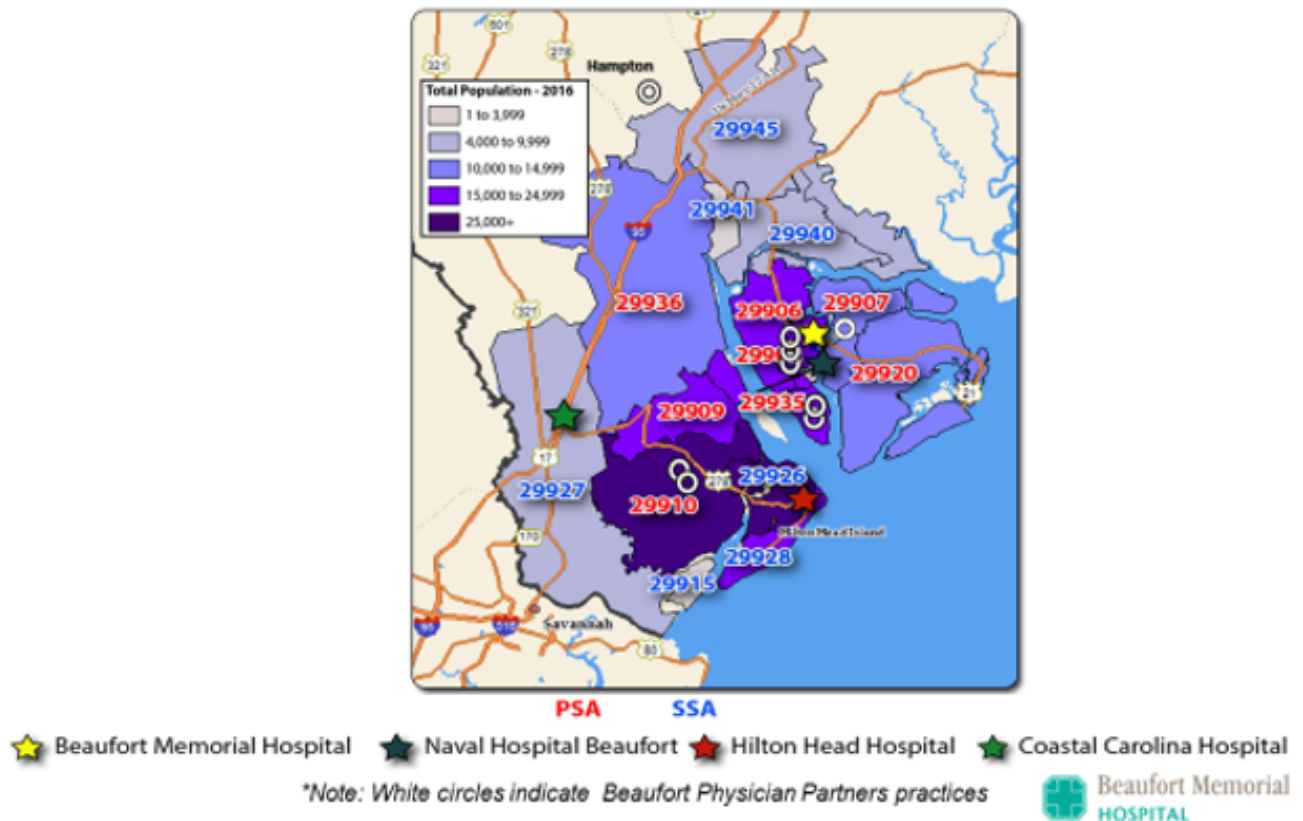
Beaufort Memorial Hospital's patients predominantly reside in Beaufort County, with smaller percentages coming from the outlying areas of Jasper and Hampton Counties. As a tourist destination, out-of-state residents are also a source of patients for BMH. During FY 2015-2017, approximately 2.5% of BMH's inpatients were from out-of-state locations. However, for the purposes of this document, focus will be on Beaufort County, where over 85% of BMH's patients reside.

As observed in the Beaufort Memorial Physician Network Service Area map below, most patients reside in the Primary Service Area (PSA) in Beaufort County which includes zip codes 29902, 29906, 29907, 29909, 29910, 29935 and 29936. Geographically these areas are the City of Beaufort, Burton, Lady's Island, Okatie, Bluffton, St. Helena Island, Town of Port Royal and Ridgeland in Jasper County. The Secondary Service Area (SSA) includes zip codes 29915, 29926, 29927, 29928, 29940, 29941, and 29945. These include Daufuskie Island, the population

dense areas of Hilton Head Island (29926-29928) and the rural area referred to as Sheldon Township (29940, 29941, 29945).

Map 1: Beaufort Memorial Hospital Physician Network Service Area

## Physician Network: Service Area Geographies



## 2019-2022 Implementation Strategy

Beaufort Memorial Hospital conducted a community health needs assessment in 2019. This implementation strategy with related implementation activities documents the efforts of the hospital to address and prioritize the community health needs identified in this 2019 CHNA.

The strategy identifies the means through which the hospital plans to address needs that are consistent with the hospital’s mission as part of its community benefit program from 2019-2022.

Beyond the programs discussed in the strategy, the hospital is addressing many of these needs simply by providing care to all, regardless of ability to pay. Health needs and resources may change, so a flexible approach is proposed in the development of the strategy to address needs identified in this 2019 CHNA.

The CHNA strategy with action plans is organized according to identified priorities which are based on the responses of a diverse range of stakeholders to include patients, community members, hospital employees,



family advocates, focus group participants, clinicians and students as the most pressing community health needs. The intent of the strategy is to establish realistic expectations for what the hospital and partners can do to address the identified needs of the community.

## **Strategy 1:**

### **Beaufort Memorial Hospital will support initiatives to address health care costs.**

#### **Implementation Activities:**

- Continue to provide the BMH Financial Assistance Application where eligible patients pay 30% down for services then continue with arranged regular payments as indicated.
- Continue to promote the MDSave online health care services in which payment covers physician, hospital (Imaging, Rehabilitation Services, Surgery and Medical Nutrition Therapy) and many pathology fees in one amount.
- Promote, support and expand the hospital's telehealth visits through *BMH Care Anywhere* so that a provider is available anywhere for one set fee.
- Continue to support the AccessHealth Lowcountry program for the uninsured (ages 19-64) to provide access to primary and specialty care for residents of Beaufort and Jasper Counties.
- Continue to support the Good Neighbor Free Medical Clinic of Beaufort which serves uninsured residents of northern Beaufort County.
- Provide a patient assistance pharmaceutical program for eligible patients who are uninsured or underinsured.
- Continue to provide the CHiP mobile wellness van which provides free and low cost screenings for the Beaufort and Jasper County community.
- Provide flu shot clinics as preventive measures for community wellness.
- Monitor growth of access to care through the addition of express care sites.
- Navigate patients receiving financial assistance to ensure they have a primary care provider.

## **Strategy 2:**

### **Beaufort Memorial Hospital will partner with other community organizations to provide programs that address alcohol, drug and mental health issues.**

Note: The hospital is not licensed to provide inpatient chemical dependency treatment. All efforts to address alcohol and other drugs will be on an outpatient basis.

### Implementation Activities:

- Promote the Beaufort County medication drop boxes to remove unwanted medication in conjunction with efforts of the Beaufort County Sheriff's Office.
- Implement Screening Brief Intervention and Referral to Treatment (SBIRT) program, a comprehensive, integrated public health approach to the delivery of early intervention and treatment services in the hospital's Emergency Department to address addictions in partnership with the Beaufort County Alcohol and Drug Abuse Department.
- Continue partnership with Beaufort County Alcohol and Drug Abuse Department (BCADAD). Clients are screened by the hospital's Emergency Department, participate in counseling at BCADAD, then are referred to the hospital's Beaufort Physician Partners for suboxone medication and required regular medication assessment visits.
- Expand promotion of program and referrals to South Carolina Department of Health and Environmental Control's evidence-based *Quitline* telephone counseling program for tobacco cessation.
- Track and monitor patient utilization of *BMH Care Anywhere* telehealth health visits for behavioral health appointments.

### Strategy 3: Beaufort Memorial Hospital will continue to address chronic disease management.

**Note: Community survey responses targeted cancer and obesity as primary issues.**

### Implementation Activities:

- Continue to provide outpatient pediatric and adult Medical Nutrition Therapy to address weight loss/weight management through consultations with registered dietitians in Beaufort and Bluffton.
- Continue to promote and provide the LifeFit Wellness Center's *Body Make Over* to engage members, employees and the community.
- Promote and track utilization of Dr. Ivette Pellegrino's weight management program from a Beaufort Physician Partners' clinic. Program provides dietary guidance, pharmaceutical intervention, and lifestyle behavior modification to encourage weight loss in obese patients.
- Continue the hospital's monthly General Cancer Support Group for cancer patients and caregivers.
- Provide programs through the LifeFit Wellness Center and Outpatient Rehabilitation Services for cancer patients, which includes three month's free access to the Center as well as lymphedema screening.
- Continue support of the DragonBoat Beaufort program which provides financial assistance to the area's cancer patients.

- Promote and provide the hospital’s CHiP mobile wellness van to offer free and low-cost screenings in Beaufort and Jasper Counties. Screenings include blood pressure, glucose, cholesterol and cancer screenings -Prostate Specific Antigen (PSA) labs, clinical breast exams, prostate exams and skin cancer checks.
- Continue partnership with the SC Department of Health and Environmental Control *Healthwise* initiative with the CHiP mobile wellness van providing screenings for the uninsured and underinsured of Beaufort and Jasper Counties at specified community events.
- Provide *Delay the Disease* program which offers evidence-based physical activity concepts for Parkinson’s disease patients through the hospital’s LifeFit Wellness Center.
- Increase utilization of LifeFit Wellness Services programs – Cardiac/Pulmonary Rehabilitation, the LifeFit Wellness Center and the CHiP mobile wellness- to prevent readmissions in high risk populations.
- Promote and monitor referrals to the hospital’s Joint Optimization Program.
- Provide screening interventions for chronic disease management through vascular screenings, calcium scoring tests and low dose lung CT scans.
- Provide telehealth for residents of Hampton County, a rural area adjacent to Beaufort County which the hospital serves in a primary care clinic.
- Increase frequency of chronic care management visits for Medicare patients through the hospital’s Beaufort Physician Partners network.
- Provide screenings and education programs for employers engaged in the hospital’s Well at Work program.
- Monitor efforts of the hospital’s website, social and print media, Speakers Bureau and health fairs to address prevention and intervention efforts toward chronic disease.
- Provide the CHNA 2019 community health resource inventory as a resource guide for the community through the hospital’s website.

## Community Health Needs Assessment Distribution Plan

The Beaufort Memorial Hospital Community Health Needs Assessment 2019 document will be posted on the hospital website at <https://www.bmhsc.org/about-us/community-health-needs-assessment> by September 30, 2019. Printed copies will be available upon request through the hospital’s website or by contacting LifeFit Community Health at 843-522-5835.

## Demographic Overview

## Population

Beaufort is the second oldest city in South Carolina and is part of the economic, cultural, and recreational hub of the large, growing region that encompasses parts of the Georgia and South Carolina coasts. It is located 75 miles south of Charleston, SC, 55 miles north of Savannah, GA, and 40 miles from Hilton Head Island, SC. Beaufort County, comprised of 923 square miles of land and water, is among the fastest growing areas in the state. Currently, the U.S. Census Bureau estimates that 188,715 people reside in Beaufort County, a 16% increase in residents since the 2010 census. Growth has been greatest in Bluffton and Port Royal followed by Hilton Head and the City of Beaufort. Bluffton and Hilton Head are both towns in the southern portion of the county. Population projections for Beaufort County over the next several years continue the upward trajectory observed in Table 1. While much smaller, a significant amount of growth was also seen in Jasper County (16%) since the 2010 census. Hampton County, also within the BMH market area, has seen an 8% decrease in population.

As the population has increased, diversity has remained relatively unchanged. The data in Table 2 indicates that the greatest proportionate change in Beaufort County has been within the Caucasian/White Alone race category impacting the smaller increments of growth in Beaufort's Asian and American Indian/Alaskan Native populations. In terms of ethnicity, which is inclusive of all races, there was an approximate 1% decline in the Hispanic/Latino population since 2010.

Demand for health services will continue to be influenced by this population growth, as will the opportunities for expansion. Service configuration will likely be heavily influenced by the age and sex composition of the population, particularly by the aging of the population seen in Table 3 below. Small dips in the preschool and high school age cohorts are overshadowed by the greater growth of those over 65. Significant double digit growth in the retirement aged and beyond with their expected higher utilization of healthcare services will be an important driver for service expansion.

Beaufort's pre-school and school-aged population is comparable to the state's; its young adult (20-44) and middle-aged population are both lower (28.75% vs. 32.25% and 24.03% vs. 26.42% respectively), and in keeping with Beaufort's popularity as a retirement community, the traditional "senior citizen" population, those over 65, is significantly higher (24.91% versus 16.25%). Although the proportion of senior citizen population has increased statewide (from 14.1% to 16.3%), the growth has been even more significant in Beaufort County (21.4% to 24.91%). Table 4 provides specific information on the number and percent of the County and State's population for each of the age cohorts discussed above.

Age demographics are an important variable in the planning of future services and potential care delivery sites for BMH. Beaufort, Bluffton and Port Royal continue to experience population growth. Age-specific data reflects a dip in the preschool-age population but continued growth, particularly in those over aged 65, and the old-old, with a 42.5% increase since 2010 in those over age 85. This burgeoning elderly population will be a key demographic driver for demand of healthcare services.

**Table 1: Population for Beaufort, Hampton & Jasper Counties**

*BMH Market Area Population Estimates as of July 1, 2018*

	2010	2011	2012	2013	2014	2015	2016	2017	2018	Change 2010- 2018
<b>Beaufort County</b>	162,231	163,958	167,460	171,010	175,178	179,782	183,149	186,844	188,715	16.32%
<b>Hampton County</b>	21,090	20,775	20,725	20,378	20,400	20,056	19,922	19,602	19,351	-8.25%
<b>Jasper County</b>	24,779	25,408	25,952	26,624	26,998	27,889	28,071	28,458	28,971	16.92%
<b>Total</b>	<b>208,100</b>	<b>210,141</b>	<b>214,137</b>	<b>218,012</b>	<b>222,576</b>	<b>227,727</b>	<b>231,142</b>	<b>234,904</b>	<b>237,037</b>	<b>13.91%</b>

Source: Low Country Council of Governments, Planning Department, July 2018

**Table 2: Race and Ethnicity in Beaufort County: 2010, 2017**

RACE/ETHNICITY	2010	2017 Estimate
African American Alone	19.3%	18.5%
Caucasian/White Alone	71.9%	74.7%
Am. Indian/Alaskan Native Alone	.3%	.2%
Asian Alone	1.2%	1.2%
Native Hawaiian or Other Pacific Islander	.1%	.1%
Two or More Races	2.1%	2.2%
Hispanic/Latino	12.1%	11.3%

Source: U.S. Census Bureau 2010-2017

**Table 3: Population by Age for Beaufort County, 2000, 2010, and 2017**

	2000 Census	2010 Census	Percent Change 2000-2010	2017 Projection	Percent Change 2010-2017
Beaufort County					
Under 5 years	8,110	10,960	35.1%	10,134	-7.5%
5 to 9 years	8,033	9,566	19.1%	10,328	8%
10 to 14 years	7,747	8,553	10.4%	9,396	9.9%
15 to 19 years	8,722	9,956	14.1%	10,146	1.9%
20 to 24 years	10,002	11,756	17.5%	12,408	5.6%
25 to 34 years	16,434	20,137	22.5%	20,819	3.3%
35 to 44 years	16,433	17,534	6.7%	18,332	4.6%
45 to 54 years	14,019	18,580	32.5%	19,229	3.5%
55 to 59 years	6,397	9,886	54.5%	11,585	17%
60 to 64 years	6,286	12,273	95.2%	12,264	-.7%
65 to 74 years	11,329	20,137	77.7%	27,722	38%
75 to 84 years	5,913	9,698	64.0%	12,396	28%
85 years +	1,512	3,197	111.4%	4,557	42.5%

Source: U.S. Census Bureau and SC Revenue and Fiscal Affairs Office, 2018.

**Table 4: Population by Age Category for Beaufort County and South Carolina, 2017**

Age Group	Beaufort County		South Carolina	
	No.	Percent	No.	Percent
Under 5 years	10,134	5.65%	289,964	5.93%
5 to 19 years	29,870	16.66%	937,717	19.15%
20-44 years	51,559	28.75%	1,577,439	32.25%
45 to 64 years	43,078	24.03%	1,293,068	26.42%
65+ years	44,675	24.91%	795,256	16.25%
<b>TOTAL</b>	<b>179,316</b>	<b>100.0</b>	<b>4,893,444</b>	<b>100.0</b>

Source: U.S. Census Bureau and SC Revenue and Fiscal Affairs Office, 2016.

## Economics

Beaufort County is consistently rated as one of the most desirable places to live within South Carolina and receives accolades from national publications (e.g. *Southern Living*, *Architectural Digest*, *American Style*, *Coastal Living*, etc.) It ranks among the highest counties in both economic and public health indicators. But, the presence of a significant number of affluent retirement communities masks the economic disparities that can be found in the area. Nothing quite exemplifies this as the contrast in median housing costs between Beaufort County, its minor civil divisions, and South Carolina. With an average median home value of \$148,600, median gross rent of \$836, and median household income of \$48,781, South Carolina as a whole is more affordable than Beaufort County which has an average median home value of \$283,800 and median gross rent of \$1,105. Although Beaufort County’s median household income is considerably higher at \$60,603, it is heavily weighted by the affluent areas of Hilton Head Island and Bluffton with median household incomes of \$72,569 and \$70,222, respectively. Table 5 displays the 2017 estimates of these demographic and economic indicators.

If we were to look only at the City of Beaufort’s and the Town of Port Royal’s demographics, which are two of the four areas that compose BMH’s primary service area, a slightly different picture emerges. The City experienced an 8.2% increase in population between 2010 and 2017 but also experienced a 4% increase in the number of persons living in poverty (19.3% vs. 15%). Port Royal experienced a 22.7% increase in population as well as an increase in the number of persons living in poverty. Overall, these areas have higher levels of poverty (19.3% and 16% versus 10.7%), a lower median household income (\$47,452 and \$46,475 vs. \$60,603) and lower median value of owner-occupied housing units (\$210,700 and \$211,500 vs. \$283,800). Table 6 displays the changes in these indicators since the 2010 census.

The median value on an owner-occupied housing unit in Bluffton has increased by 19.8% since 2010 and median household income rose by 9% making Bluffton less affordable since 2014. Only 6.8% of its residents live in poverty, and its median gross rent of \$1,456 is the highest of all areas within Beaufort County (see Table 6). When compared to Northern Beaufort County, these individual contrasts to the aggregate data are particularly important to BMH, since the City of Beaufort (19.3% poverty) and the Town of Port Royal (16% poverty) are the top two sources of inpatients for the hospital.

Table 7 provides more specific information about the growing level of poverty among children and families in Beaufort County. Beaufort County trends slightly below the statewide poverty rates. While the percent of children in poverty has decreased, the percent of persons in poverty as a whole in Beaufort County has increased since 2010. As discussed in the 2012 Together for Beaufort County Annual Report, children living in poverty are at a disadvantage for future opportunities. These disadvantages include greater infant mortality,

lower birth weight, lack of early childhood care, inadequate housing, inadequate healthy food, and eventually lower scores on math and reading tests. The 2017 Kids Count data distributed by Children’s Trust of South Carolina indicates that many of the economic, education, health, and family and community indicators for Beaufort County have worsened or only changed slightly since 2010. This disadvantage can be seen in the review of morbidity and mortality statistics relevant to childhood in the following section.

**Table 5: Summary of Demographic and Economic Indicators for Beaufort County & Minor Civil Divisions, 2017**

Census Data Item	South Carolina	Beaufort County	City of Beaufort	Port Royal	Hilton Head	Bluffton
Population Change 2010-2017	9.9%	16.3%	8.2%	22.7%	6.9%	76.9%
Foreign Born persons, % 2010-2017	4.9%	8.6%	4.6%	4.8%	12.8%	14%
High School Graduates, % persons 25+	86.5%	92.7%	91.2%	94%	93.6%	93%
% persons 25+ with Bachelor’s or higher	27%	39.8%	32.9%	28.4%	52%	42.8%
Median value of owner-occupied housing unit	\$148,600	\$283,800	\$210,700	\$211,500	\$454,300	\$244,100
Median Gross Rent	\$836	\$1,105	\$859	\$1,101	\$1,153	\$1,456
Median HH income	\$48,781	\$60,603	\$47,452	\$46,475	\$72,569	\$70,222
Persons in poverty	15.4%	10.7%	19.3%	16%	10.9%	6.8%

Source: <http://quickfacts.census.gov>

X=Projections at MCD level are not available.

**Table 6: Changes in Demographic and Economic Indicators for Beaufort County & Minor Civil Divisions, 2010-2017**

Census Data Item	South Carolina	Beaufort County	City of Beaufort	Port Royal	Hilton Head	Bluffton
% Change in Foreign Born persons, 2010-2017	-1%	-1.2%	-2.3%	.5%	-1.8%	-3.4%
% Change High School Graduates, persons 25+	1.5%	1.0%	1.1%	1.4%	.8%	4.5%
% Change persons 25+ with Bachelor’s or higher	1.7%	2.4%	-6.5%	-1.3%	4.8%	13.4%
% Change in Median value of owner-occupied housing unit	8%	4%	-14%	8.9%	2%	19.8%
Median Gross Rent	\$836	\$1,105	\$859	\$1,101	\$1,1153	\$1,456
% Change in Median HH income	8.3%	5.8%	1.1%	-.3%	6%	9%
% Change in Persons in poverty	-2.6%	-2.2%	.3%	1.4%	1.6%	-8.8%

Source: <http://quickfacts.census.gov>

**Table 7: Selected Poverty Statistics for Beaufort County & South Carolina, 2017**

Percent Below Poverty Level	Beaufort County		South Carolina
	2010	2017	2017
Children (People Under 18)	21.0%	18.3%	22.3%
Persons in Poverty, Percent	10.5%	10.7%	15.4%

Source: U.S. Census Bureau 2008-2017 American Community Survey 5-Year Estimates and 2010-2017 American Community Survey 5-Year Estimates

## Community & Public Health Involvement

Beaufort Memorial Hospital is fortunate to be located within a county that has a robust configuration of health and human services agencies with a lengthy history of interagency collaboration. BMH and its employees have a track-record of providing technical support and leadership to innumerable organizations. One of the hospital's major commitments has been the participation in the Together for Beaufort County initiative, with employees participating on 5 of the coalitions. The hospital was one of the original partners/funders of this initiative. A historical overview and description of this important public-private partnership follows.

## **Community Input - Together for Beaufort County**

In 2004 a group of Beaufort County leaders introduced a community indicators project called "Together for Beaufort County" (T4BC). This initiative is sponsored by the Beaufort County Human Services Alliance, a department of Beaufort County Administration, and is an initiative that allows all Beaufort County residents to work together to improve the County's quality-of-life. The Alliance initially engaged a consultant to develop a series of indicators that would permit the monitoring of progress as the identified issues were addressed.

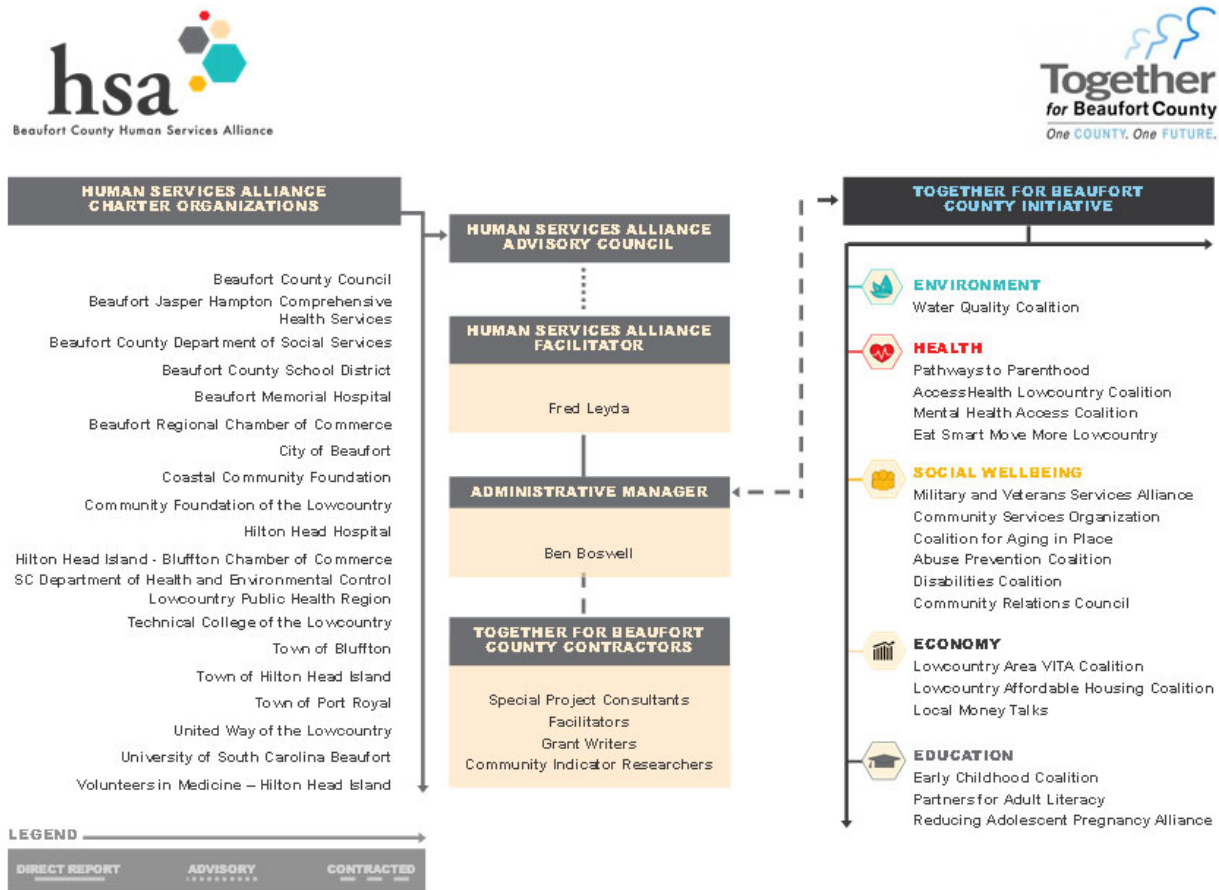
Operational definitions of four strategic goals, each with four complementary objectives, and baseline data for measurement of the objectives were delineated. The four strategic goals were:

- **Strategic Goal One:** *Together we will, with our Lowcountry neighbors, build an economy that supports a sustainable quality-of-life.*
- **Strategic Goal Two:** *Together we will break the cycle of illiteracy by exceeding national education standards.*
- **Strategic Goal Three:** *We will break the cycles of poverty that impact children, elderly and the working poor.*
- **Strategic Goal Four:** *Together we will balance growth in a manner that promotes and protects the health of our residents.*

These original strategic goals have evolved into five categories of focus: Economy, Education, Poverty, Health and Environment. Figure 1 (next page) displays these five categories and the associated coalitions.



Figure 1: Human Services Alliance Organizational Chart



The sharing of this information established a common ground for public, private, and nonprofit leaders to engage the public in a dialogue about how to work together to address these and other related issues. Additionally, it fostered collaborations among public, private, nonprofit and faith organizations to address gaps in services, build efficiencies, gain understanding, and address the collective responsibilities to the community shared by the human service sector.

A 2009 Interim Report highlighted the actions taken by local community groups to improve Beaufort County’s quality-of-life. In 2011, the Alliance contracted with University of South Carolina Beaufort to evaluate the progress made toward achieving the original T4BC quality-of-life objectives and present the findings at a series of public forums. In 2013 the Poverty Category was changed to Social Well Being. To date the coalitions continue to address quality of life indicators in Beaufort County. Goals 2 and 3 are most closely interrelated to BMH’s mission as a not-for-profit, community-based hospital. Table 8 displays the hospital’s representation (2016-2019) on the T4BC coalitions.

**Table 8: Together for Beaufort County Coalitions & BMH Membership (2016-2019)**

Category of Initiatives		BMH Membership
GOAL 1: Environment Water Quality Coalition		
GOAL 2: Health		
Pathways to Parenthood (formerly Adequacy of Prenatal Care)		X
Access Health Lowcountry Coalition (for the uninsured)		X

Mental Health Access Coalition		X
Eat Smart Move More Lowcountry		X
<b>GOAL 3: SOCIAL WELL BEING</b>		
Military and Veterans Services Alliance		
Community Services Organization		X
Coalition for Aging in Place		
Abuse Prevention Coalition		
Disabilities Coalition		
Community Relations Council		
<b>GOAL 4: ECONOMY</b>		
Lowcountry Area VITA Coalition (Income tax preparation assistance)		X (Hospital promotes through <i>You First</i> employee newsletter.)
Lowcountry Affordable Housing Coalition		
Local Money Talks		
<b>GOAL 5: EDUCATION</b>		
Early Childhood Coalition		
Partners for Adult Literacy		
Reducing Adolescent Pregnancy Alliance		

Source: Beaufort Memorial Hospital (2019)

## Community Input – SC Revenue and Fiscal Affairs Office

A community’s health is traditionally measured by an assortment of health status indicators, particularly morbidity and mortality data. In general, Beaufort County ranks among the healthiest of South Carolina’s counties. Among the state’s 46 counties, as listed in *County Health Rankings: 2019 South Carolina*, Beaufort County ranked 1<sup>st</sup> in health outcomes for length and quality of life. It also ranked 1<sup>st</sup> in many health factors, a summary ranking that was based on health behaviors (tobacco use, diet and exercise, alcohol and drug use, sexual activity), clinical care (access to care, quality of care), social and economic (education, employment, income, family and social support, and community safety). Beaufort County’s percentage was above state average in adult alcohol use and uninsured residents.

Beaufort County is currently ranked as the healthiest county in South Carolina. However, just as aspects of the demographical information were influenced by the more affluent areas, such is the case with morbidity and mortality data. Additionally, this “healthy” ranking must be tempered by South Carolina’s national ranking as 12<sup>th</sup> highest adult rate in obesity, 36<sup>th</sup> in smoking, 5<sup>th</sup> in prevalence of diabetes, 8<sup>th</sup> in high blood pressure, 37<sup>th</sup> in cancer deaths and 36<sup>th</sup> in cardiovascular deaths.

Sources: United Health Foundation America’s Health Rankings 2018, [www.stateofobesity.org](http://www.stateofobesity.org) (2017).

## Child and Adolescent Mortality

While Beaufort County’s Infant Mortality Rate is lower than that of South Carolina, as shown in Table 9, (4.1/1000 to 6.8/1000) there is statistical disparity between white and African American populations. With community partners, Beaufort Memorial is working to address these disparities with an emphasis on increasing the percentage of women receiving adequate prenatal care (Table 10).

The leading causes of death for children and adolescents nationwide are accidents, suicide and homicide. As calculated from Table 11, accidents make up 41% of deaths to children 1-17 in Beaufort County.

According to the SC Department of Health and Environmental Control, S.C. Public Health Statistics, from 2010 to 2017, homicide made up 10% of child and adolescent deaths in Beaufort County followed by cancer (8%). Suicide made up only 3% of child and adolescent deaths in Beaufort County. The percentage of accidental deaths among young adults (18-34) after collapsing the data was similar at 43%, but suicide rates in this population were much higher (16%).

**Table 9: Infant Mortality Rate per 1000 Live Births, Beaufort County, 2014-2017**

Year	Infant Mortality Rate, All	White Infants	Black Infants	SC – All Infants
2014-2016	4.1	2.9	7.6	6.8
2015-2017	4.1	2.5	9	6.8

Source: National KIDS COUNT program, Children’s Trust of South Carolina, 2017

**Table 10: Percent of Babies Born with Less than Adequate Prenatal Care, Beaufort County, 2014-2017**

Year	All	White	Black	SC - All
2014	40.6	38.8	44.9	32.9
2017	36.5	35.7	38.5	31.9

Source: National KIDS COUNT Program, Children’s Trust of South Carolina, 2017

**Table 11: Deaths by Accident in Beaufort County, 2010- 2017**

Death Statistics for Residents of Beaufort				
Year(s): 2010-2017				
County: Beaufort				
	Cause of Death			
	Accidents		All Causes	
Age	Number	Rate	Number	Rate
0 to 1	6	35.8	66	394.0
1 to 4	8	12.2	22	33.4
5 to 9	4	5.0	11	13.7
10 to 14	4	5.4	11	14.9
15 to 17	8	16.7	15	31.2
18 to 19	13	40.6	21	65.6
20 to 24	39	40.2	80	82.4
25 to 34	78	47.3	202	122.6
35 to 44	55	37.9	227	156.4
45 to 54	66	43.4	524	344.5
55 to 64	64	34.2	1,240	661.9
65 to 74	58	28.6	2,204	1088.1
75 to 84	81	85.3	3,054	3216.5
85 plus	115	364.6	3,795	12032.3
Unknown	0	0.0	0	0.0
All Ages	599	43.0	11,472	824.0

Footnote	Rates per 1,000 population for All Causes							
	Rates per 100,000 population for Specific Cause of Death							
	Rates calculated with small numbers are unreliable and should be used cautiously.							

Source: S.C. Department of Health and Environmental Control, S.C. Public Health Statistics, 2017

## Adult Morbidity

According to the Robert Wood Johnson Foundation’s *County Health Rankings and Roadmaps*, the average life expectancy at birth was 82.5 years of age compared to 77 years of age for South Carolina. This same report indicated that 50% of women in Beaufort County received a mammogram and 48% of the population in Beaufort County had a flu vaccine. Beaufort County’s residents exceeded state percentages for these preventive measures (50% in Beaufort County to 45% in South Carolina and 48% in Beaufort County to 45% in South Carolina).

Table 12 reviews a number of other indicators of morbidity. In general, Beaufort County residents fare better than their state counterparts. However, Beaufort lags behind the state for excessive drinking (21% to 18%) and, while much improved since 2014, the number of health care uninsured is still slightly above the State average (14% to 12%).

As previously mentioned, the statistical information available at the county level frequently masks the disparities found in vulnerable populations with disparities evident between whites, African American and other non-white populations.

**Table 12: Selected Morbidity Data for Beaufort County, 2014 - 2019**

Outcomes	2013		2014		2015		2019	
	Beaufort Co.	SC	Beaufort Co.	SC	Beaufort County	SC	Beaufort County	SC
<b>MORBIDITY</b>								
Poor or Fair Health	10%	16%	10%	16%	10%	16%	13%	19%
Poor Physical Health Days	2.7	3.6	2.7	3.6	2.7	3.6	3.3	4.2
Poor Mental Health Days	2.9	3.6	2.9	3.7	2.9	3.7	3.8	4.4
<b>HEALTH BEHAVIORS</b>								
Adult Smoking	16%	21%	17%	20%	17%	20%	13%	20%
Adult Obesity	21%	31%	22%	32%	22%	32%	23%	32%
Physical Inactivity	18%	28%	17%	27%	17%	26%	16%	25%
Excessive Drinking	19%	14%	19%	14%	19%	14%	21%	18%
<b>CLINICAL CARE</b>								
Uninsured	27%	20%	22%	19%	22%	20%	14%	12%
Primary Care MDs	1,552:1	1,545:1	1,554:1	1,535:1	1,556:1	1,521:1	1,370:1	1,490:1
Dentists	1,129:1	2,229:1	1,098:1	2,068:1	1,116:1	2,002:1	960:1	1,840:1

Source: <http://www.countyhealthrankings.org>

\* Indicates data was not available

## Adult Mortality

The following data shows causes of death by age in Beaufort County since 2010 according to the S.C. Department of Health and Environmental Control (SC DHEC).

Nationally, the three leading causes of death for adults are heart disease, cancer and stroke (cerebrovascular disease). According to the calculation of information taken from SC DHEC, in Beaufort County cancer was the leading cause of death (34%) for the adult (35-84) age group (Table 14). Cancer was the cause of death for 14% of those over 85 in Beaufort County during this time period.

Heart disease, the leading cause of death in most industrialized countries, comprised only 18% of the adult (34-84) deaths in Beaufort but 22% of the deaths in those 85 or older (Table 15).

According to SC DHEC, the leading type of cancer in Beaufort County was cancer of the lungs and bronchus with 455 deaths from 2013-2017 and a rate of 29.2 deaths per 100,000 population. This is followed with prostate cancer with a rate of 19.4 and female breast cancer with a rate of 18.8. These are illustrated in the following chart on page 22.

**Table 13: Causes of Death All Ages in Beaufort County, 2010-2017**

Death Statistics for Residents of Beaufort		
Year(s): 2010-2017		
County: Beaufort		
	<u>All Causes</u>	
Age	Number	Rate
0 to 1	66	3.9
1 to 4	22	0.3
5 to 9	11	0.1
10 to 14	11	0.1
15 to 17	15	0.3
18 to 19	21	0.7
20 to 24	80	0.8
25 to 34	202	1.2
35 to 44	227	1.6
45 to 54	524	3.4
55 to 64	1,240	6.6
65 to 74	2,204	10.9
75 to 84	3,054	32.2
85 plus	3,795	120.3
Unknown	0	0.0
All Ages	11,472	8.2
Footnote	Rates per 1,000 population for All Causes Rates calculated with small numbers are unreliable and should be used cautiously.	

Source: S.C. Department of Health and Environmental Control, S.C. Public Health Statistics, 2010-2017

**Table 14: Cancer Deaths in Beaufort, 2010-2017**

Death Statistics for Residents of Beaufort				
Year(s): 2010-2017				
County: Beaufort				
Cause of Death				
	<u>Cancer (Malignant neoplasms)</u>		<u>All Causes</u>	
Age	Number	Rate	Number	Rate

0 to 1	0	0.0	66	394.0
1 to 4	1	1.5	22	33.4
5 to 9	2	2.5	11	13.7
10 to 14	2	2.7	11	14.9
15 to 17	0	0.0	15	31.2
18 to 19	0	0.0	21	65.6
20 to 24	1	1.0	80	82.4
25 to 34	13	7.9	202	122.6
35 to 44	44	30.3	227	156.4
45 to 54	148	97.3	524	344.5
55 to 64	469	250.3	1,240	661.9
65 to 74	890	439.4	2,204	1088.1
75 to 84	887	934.2	3,054	3216.5
85 plus	530	1680.4	3,795	12032.3
Unknown	0	0.0	0	0.0
All Ages	2,987	214.5	11,472	824.0
Footnote	Rates per 1,000 population for All Causes Rates per 100,000 population for Specific Cause of Death Rates calculated with small numbers are unreliable and should be used cautiously.			

Source: S.C. Department of Health and Environmental Control, S.C. Public Health Statistics, 2010-2017

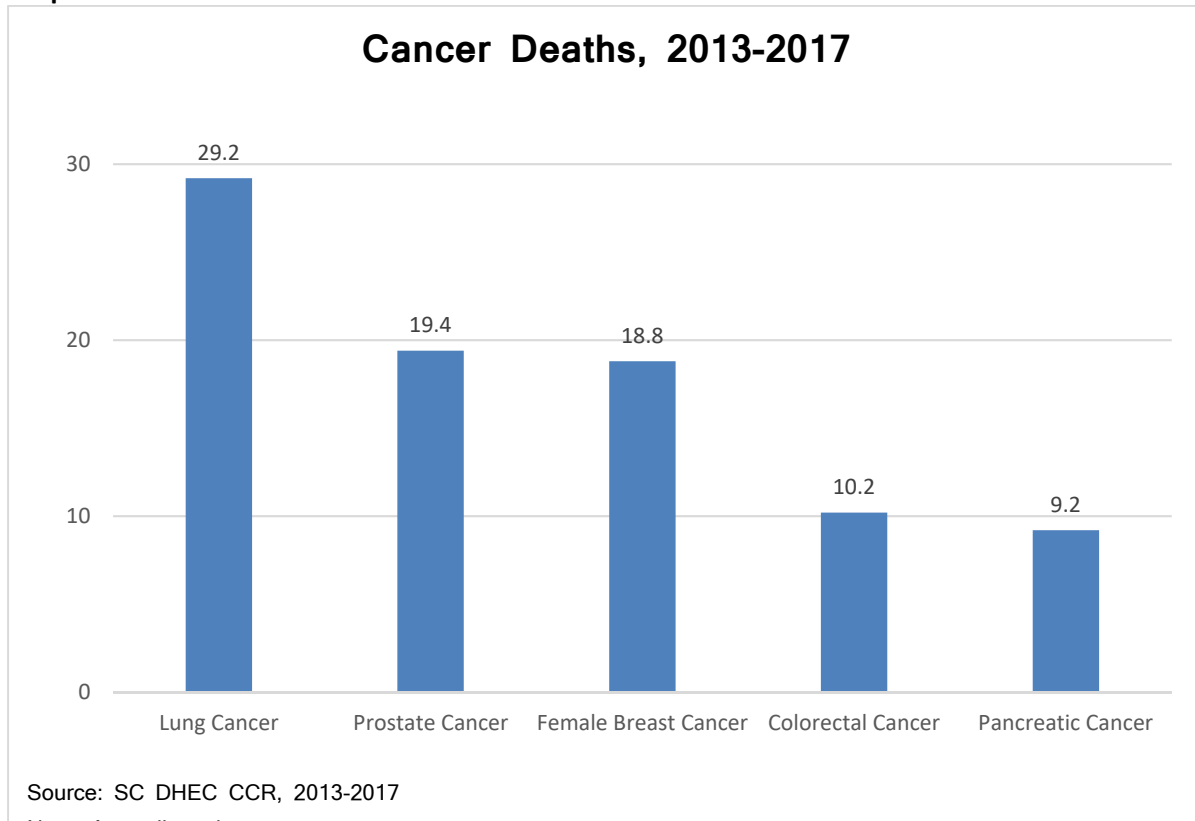
Table 15: Heart Disease Deaths in Beaufort County, 2010-2017

Death Statistics for Residents of Beaufort				
Year(s): 2010-2017				
County: Beaufort				
Cause of Death				
Age	<u>Diseases of heart</u>		<u>All Causes</u>	
	Number	Rate	Number	Rate
0 to 1	2	11.9	66	394.0
1 to 4	2	3.0	22	33.4
5 to 9	0	0.0	11	13.7
10 to 14	0	0.0	11	14.9
15 to 17	1	2.1	15	31.2
18 to 19	1	3.1	21	65.6
20 to 24	0	0.0	80	82.4
25 to 34	9	5.5	202	122.6
35 to 44	26	17.9	227	156.4
45 to 54	92	60.5	524	344.5
55 to 64	225	120.1	1,240	661.9
65 to 74	383	189.1	2,204	1088.1
75 to 84	577	607.7	3,054	3216.5
85 plus	827	2622.1	3,795	12032.3
Unknown	0	0.0	0	0.0
All Ages	2,145	154.1	11,472	824.0

Footnote	<p>Rates per 1,000 population for All Causes  Rates per 100,000 population for Specific Cause of Death  Rates calculated with small numbers are unreliable and should be used cautiously.</p>
----------	---

Source: S.C. Department of Health and Environmental Control, S.C. Public Health Statistics, 2010-2017

**Graph 1**



## Beaufort County Physician Resources

Beaufort County has three distinct medical communities, with the location of practices conforming to the respective hospital services areas of Beaufort Memorial Hospital, Coastal Carolina Hospital, and Hilton Head Regional Medical Center. Table 16 displays the number of physicians on staff at each of the three hospitals. The listing has not been adjusted for cross-privileges nor does it reflect full-time-equivalents (FTEs).

**Table 16: Physician Hospital Affiliation by Specialty, 2019**

Physician Specialty	Beaufort Memorial Hospital	Coastal Carolina Hospital*	Hilton Head Regional Medical Center*
Cardiology	4	8	10

Dermatology	1	Not listed	2
Emergency Medicine	17	13	8
Family Medicine	10	10	9
Gastroenterology	5	4	8
General Surgery	4	5	10
Gynecology	See Obstetrics	See Obstetrics	See Obstetrics
Hematology	1	3	4
Hospitalists	21	1	6
Internal Medicine	22	17	5
Interventional Radiology	7	1	Not listed
Neurology	2	2	2
Nephrology	7	4	9
Obstetrics & Gynecology	9	8	11
Oncology	1	1	5
Ophthalmology	5	Not listed	4
Otolaryngology (ENT)	5	Not listed	Not listed
Orthopaedics	13	10	10
Pediatrics	11	7	10
Plastic & Reconstructive Surgery	2	2	7
Psychiatry	4	Not listed	1
Pulmonology, Critical Care	2	2	2
Radiation Oncology	2	2	1
Urology	2	5	4
Vascular Surgery	1	Not listed	2

*\*Physician count has not been adjusted for cross-privileges between the two Tenant-owned facilities.*

*Source: Coastal Carolina Hospital website, Hilton Head Hospital website, Beaufort Memorial Hospital Medical Staff Services, July 2019.*

In 2019, Beaufort County had a primary care physician to population ratio of 1,370:1 compared to the State of South Carolina at 1,490:1. This ratio includes family practitioners, internists, and pediatricians.

Over the past several years, BMH has aggressively recruited physicians, particularly in primary care and psychiatry. Successful recruitment has led to the establishment of Beaufort Memorial Bluffton Medical Services and Lady’s Island Internal Medicine. With the greying of Baby Boomers and the projected population growth, BMH will be confronted with continued demand for primary care services and specialties best suited for the treatment of chronic disease and a growing geriatric population.

## Summary

Overall, health status indicators for Beaufort County reflect a population that is somewhat healthier than the rest of South Carolina. This appears to be in keeping with people’s perceptions. With only 13% of the population rating their health as fair or poor, and even fewer experiencing poor physical health days (3.3), and poor mental health days (3.8), this is compared to the rest of the state, where 19% reported poor or fair health, 4.2 poor physical health days, and 4.4 poor mental health days.

Although Beaufort County has achieved top rankings in health outcomes and health factors and has a resident population that makes use of preventive health measures, there are very definitive areas of concern where intervention is needed to circumvent future increases in morbidity and mortality, especially from preventable causes. Excessive weight has been identified as a causal factor in the development of heart disease, diabetes, hypertension, and stroke.



The number of uninsured residents has also been identified as a variable that is impacting the health and wellness of Beaufort County. Of considerable concern is the growing percentage of individuals and families living in poverty within the Beaufort Memorial Hospital service area. This compromises access to health care, already constrained by insufficient primary care capacity and challenges in overcoming geographic distance to obtain care. The limited access to primary care practitioners may be a contributing factor in the higher rates of Emergency Department utilization for hypertension, heart disease, and stroke. Continued lack of access to adequate primary care will impede progress in reducing morbidity related to chronic disease and could ultimately lead to premature death.

## Survey Assessment Process & Methodology

The quantitative analysis identified several areas of emphasis for Beaufort Memorial Hospital's community wellness programming. Although the precision of vital statistic data can provide impartial guidance for the hospital's resources, it is also essential to understand and be responsive to the community's perception of what they believe are the major health needs.

### Community Health Needs Survey

In keeping with BMH's commitment to improve community health and promote wellness, a survey was conducted to gather information about the community's perception of the major health problems and unhealthy behaviors in Beaufort County. The survey was conducted through Survey Monkey. Surveys were administered January-March 2019, both online and in paper in English. Survey data from paper copies were entered into the Survey Monkey program. Spanish surveys were administered January-April, 2019 also online and in paper. English survey responses totaled 1,643 and were received electronically and on paper. Spanish responses totaled 40. Respondents represented 26 zip codes. Of the total 1,643 English surveys received, there were 1,630 respondents who entered a zip code.

The survey was promoted via the Beaufort Memorial Hospital (BMH) website and the hospital's Facebook page, through the patient portal to patients with an email address enrolled in the hospital's clinics (practices), through the Beaufort County Human Services Alliance weekly electronic newsletter (distribution 700+) and to various community groups. Other sites for electronic administration included distribution to all BMH employees, to Well at Work employers, classes of Beaufort High School health sciences students, AccessHealth Lowcountry Advisory Council members, KidFest Planning Committee, University of SC at Beaufort nursing students, Marine Corps Community Services staff, PASOS community health workers, BMH mobile wellness van clients in Sun City, the Collaborative Organization of Services for Youth board members, and to readers of *La Isla Magazine*.

Paper copies were administered to the following: Ridgeland Hardeeville High School Medical Careers students, BMH Labor and Delivery staff, BMH General Cancer Support Group members, AccessHealth Lowcountry clients, clients of the BMH mobile wellness van, Faith Memorial Baptist Church members on St. Helena Island, Second Mount Carmel Baptist Church members in Burton, BMH Breast Health Center patients, BMH Infusion Center patients, BMH Patient and Family Advisory Council members, Beaufort County Detention Center inmates/staff, Good Neighbor Free Medical Clinic of Beaufort patients/staff, and the BMH Paula Williams Memorial Breast Cancer Support Group members.

Sixteen hundred forty-three (n=1,643) individuals completed the survey in English and forty (n=40) completed the survey in Spanish. Fourteen hundred four (1404) were completed online in English and 40 forty (40) online in

Spanish. The remaining 199 surveys were submitted on paper and entered into the online survey data base. In all, 1643 surveys in English and 40 in Spanish were received from 26 zip codes, with the majority of respondents residing in BMH's primary and secondary service areas. Of the 1643 respondents in English, 1630 respondents chose to enter a zip code. Table 17 displays the survey results by zip code.

The 1,630 shown below in Table 17 are English speaking residents of the direct marketing area of Beaufort Memorial Hospital. The remainder of the surveys were completed by persons who lived in tertiary areas and beyond, including other locations in Hampton County, South Carolina, Georgia and from as distant as Virginia and New York.

Of the 1,643 respondents to the survey in English, most were predominantly female (67.51%) and over age 40 (82.44%). Racial make-up included 79.70 % white, 16.18% black, 1.50% Hispanic American, and 1.12% Hispanic or Latino. A significant number had a college degree (30.40%) or graduate degree (24.86%). Income wise, 1,614 of those completing this question on the survey provided information on household income: 24.54% had household income under \$50,000, 30.92% were between \$50,000-\$99,999, and 22.24% over \$100,000. In terms of paying for health care, 3.39% indicated that they are unable to pay for healthcare, 52.03% had Medicare or Medicaid, 7.76% pay with cash, 1.97% apply for financial assistance, and the remainder were insured.

In the Spanish survey, which had a much smaller response total of 40 persons, 70% of the respondents were female with 42.50% of age 26-39 and 42.50% age 40-54. Racial makeup included 93.50% Hispanic or Latino and 7.50% Hispanic American. For education 27.50% had less than a high school degree, 27.50% had a high school degree or equivalent (GED), 20.00 % had some college but no degree, 2.50% had an associate's degree, 2.50 % had a trade or business school certification, 15.00% had a college degree and 5.00% had a graduate degree. For income, 80 % had household income under \$50,000, 10% had income of \$50,000-\$99,000, 2.50% had income over \$100,000 and 7.50% preferred not to answer the question. In terms of paying for health care, 66.67% pay with cash, 15.38 % had health insurance their employer provided, 5.12% had either health insurance bought for themselves or were covered by a family member's insurance, and 20.51% were unable to pay for health care.

The survey also inquired about the 5 most significant "health problems" in their community. As seen in Graph 2 on page 27, the ability to pay for health care was the most frequently cited problem among the respondents on the English survey, with 63.65% of those completing the survey indicating this as a significant health problem. Due to the multiple check off nature of the question, the cost of health care also ranked highly with 61.24% responses. Prescription medication too expensive (46.06%), lack of health insurance (45.21%), obesity in adults (42.48%), cancer (36.87%), drug abuse-illegal substances (33.88%) drug abuse-prescription medications (31.99%) and mental health (25.58%) are the other top health problems identified by the survey responses.

Among the 35 Spanish responses to the question regarding health problems in their community, as in the English responses, the ability to pay for health care was the most frequently cited problem with 71.43% or 25 responses. The other responses were lack of health insurance (62.86% or 22 responses), lack of dental care and obesity in adults (both 45.71% or 16 responses), prescription medication too expensive (40% or 14 responses), cancer (34.29% or 12 responses), obesity in children and teenagers (28.57% or 10 responses), alcohol abuse and domestic violence (both at 25.71% or 9 responses), and cost of health care (22.86% or 8 responses).

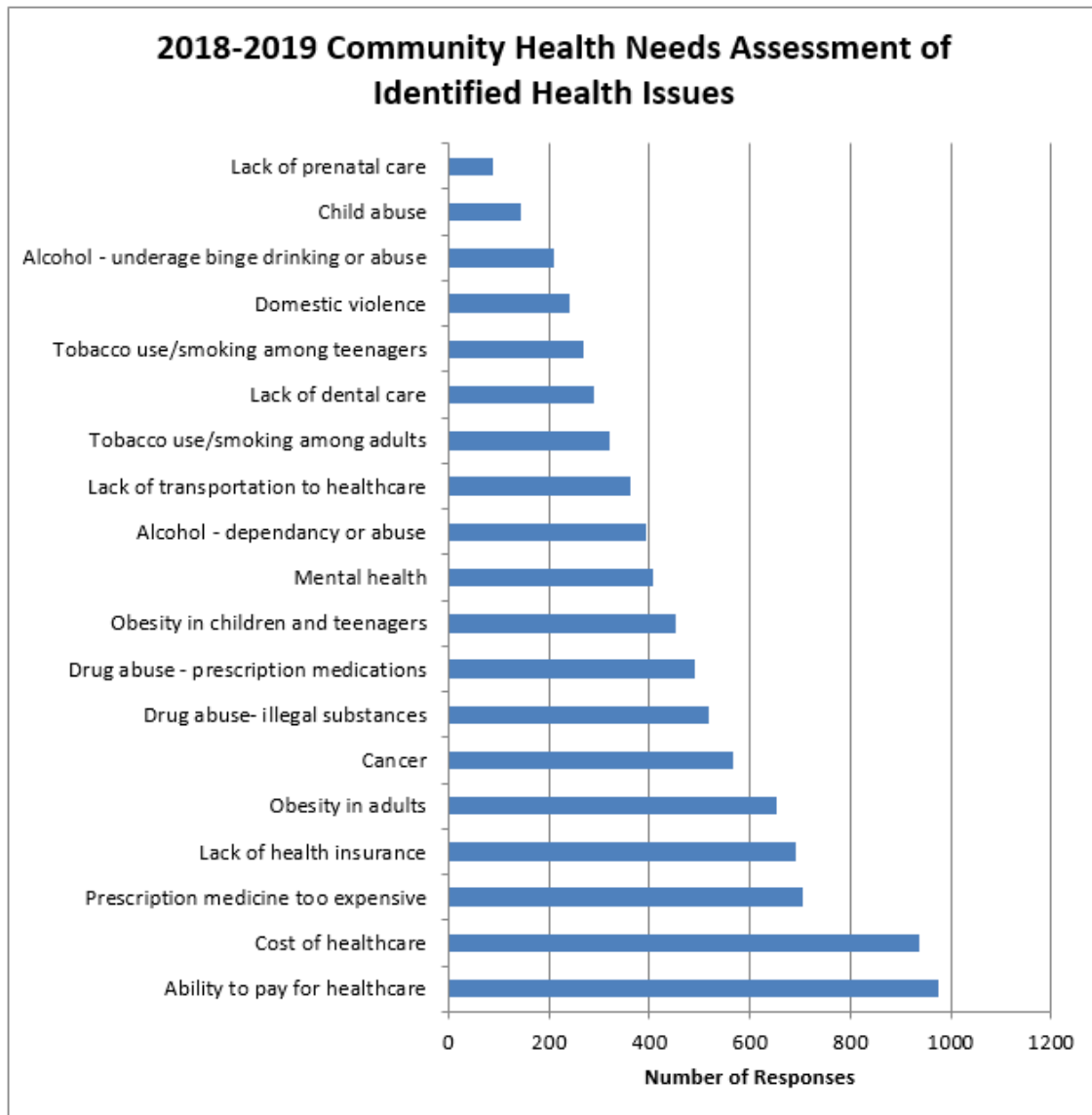
**Table 17: Community Health Needs English Survey Respondents by Zip Code**

Zip Code	Geographic Location	Sample Size	Vulnerable Population
29907	Lady's Island	267	Yes
29909	Bluffton/Hardeeville/Okatie	267	Yes
29902/29901/29903	Beaufort/Parris Island/Port Royal	247	Yes
29906	Beaufort/Laurel Bay/Port Royal/Shell Point	188	Yes
29920	Saint Helena Island	173	Yes
29910	Bluffton	154	Yes
29935	Port Royal	67	Yes
29924/29944/29916/29918/29911/29932	Hampton County including Varnville, Almeda, Brunson, Early Branch and Luray	46	Yes
29926/29915	Hilton Head Island/Daufuskie Island	34	Yes
29936	Hardeeville, Ridgeland, Switzerland	33	Yes
29940/29941	Seabrook, Lobeco, Sheldon, Dale, Coosa	31	Yes
29927/29934	Hardeeville, Purrysburg, Limehouse, Levi, Pineland	27	Yes
29810/29827	Allendale, Fairfax	19	Yes
29945	Yemassee, Salkahatchie, Gardens Corner	15	Yes
Outside Beaufort County and/or South Carolina		62	
<b>Total</b>		<b>1630</b>	

Source: Beaufort Memorial Hospital Community Health Needs Survey 2019

Note: All survey respondents did not enter a zip code.

**Graph 2**



*Source: Beaufort Memorial Hospital Community Health Needs English Survey responses 2019*

## Focus Group

In addition to the survey, qualitative data was gathered through a focus group conducted by Cindy Coburn-Smith, Manager, Beaufort Memorial Community Health Improvement Program, and Brenda Hughes, Lowcountry Region Community Health Coordinator, SC Department of Health and Environmental Control. Sixteen (n=16) women, all members of the Paula Williams Memorial Breast Cancer Support Group sponsored by BMH, participated in a focus group that inquired about their understanding of the local public health system and more pointed questions about the needs of the group and whether they are being met. This hospital sponsored support group has been meeting since 1999. The themes identified from the group included concern that the term “public” is stigmatized as in public health, public housing because it implies negative connotations. The

term may give the stigma that people are disadvantaged. The members expressed a lack of knowledge about resources and information relative to diagnosis and alternative treatments/methodologies. They expressed an interest in cancer patients receiving patient navigation. They encouraged political engagement so that lawmakers and stakeholders understand about chronic disease and its impact. They also expressed the need for trust and transparency in the public health system.

Overall, the participants viewed the public health system as responsive to their needs. They defined the public health system as the following: transportation, medical providers, support groups, pharmaceutical companies, Federally Qualified Health Centers, mental health resources, herbal remedies/holistic medicine, communication (to those who may be illiterate), vans that offer screening, health literacy, churches, schools and insurance companies.

When asked how effective the public health system is in preventing chronic disease, the responses included: 1.) not effective because insurance companies do not provide enough coverage, 2.) people do not know about resources and are therefore unable to take advantage of resources, 3.) many people don't read the pamphlets about services provided unless they have been told they are at risk, 4.) people are given a main diagnosis and are not given information on co-morbidities but are referred, 5.) not enough information is being shared or not shared in a timely manner, 6.) communication with primary care providers is not happening, 7.) people do not know what they should monitor with their health and 8.) there is not enough information about nutritional intervention/holistic or alternative treatments.

As far as suggestions to make the public health system more effective, the responses included: 1.) health education should start earlier, 2.) insurance should not limit coverage for screenings, 3.) physicians should be more proactive with doing certain screenings, 4.) communicate with the public about resources and promote them, 5.) use radio and local television channels to promote community resources and events, 6.) provide health care navigators, 7.) consistently send out information about resources, 8.) improve the transportation infrastructure, 9.) establish trust between patients and providers, 10.) know who the local politicians are and notify them of how health in the (geographic) area is affected by various factors and 11.) provide inclusion in support groups for spouses, children and caregivers.

This support group has participated in this focus group activity as part of the hospital's Community Health Needs Assessment process in 2012/2013, 2016 and in 2019 with a variety of new and long-standing members in each session. The same questions were discussed each time.

Focus group similarities 2012-2019: Issues expressed include transportation needs, prescription assistance, health care insurance, not enough emphasis on preventive screenings to promote healthy lifestyles and behaviors, need for patient advocacy (individually and institutionally) and social supports and need for information on resources.

Focus group differences 2012-2019: Increased awareness energy and action around patients' advocacy and political engagement, information needed specific to co-morbidities related to diagnosis, knowledge/access to alternative treatments, transparency and trust of providers and the word "public" has negative connotations.

## **Survey Collection Methods**

Data was collected, analyzed and disseminated from a variety of sources. Data was scored, based on an evidence-based prioritization. Data from the Community Health Survey 2019 was the primary "driver" of the items being scored to ensure the voice of the community was captured. The most significant measure included health problems (access to medical care, cost of health care, chronic disease, obesity, drug abuse, mental health

issues, etc.) and health behaviors (diet, exercise, etc.). Respondents were instructed to check-off what they considered to be the five most important health problems in their community. Measures used in the survey were grouped into categories, or constructs (i.e. chronic disease, obesity, access). The categories were ranked based on the percentages of responses received for each measure. Additionally, qualitative data was captured in the Community Health Survey in order to give respondents another outlet to express their opinions. A total of 1,643 residents were surveyed in English and 40 in Spanish, spanning in age from high school students to senior citizens. Surveying opportunities were strategically chosen to ensure inclusion of vulnerable populations. Surveys were distributed through the hospital’s website, through the patient portal to patients with an e-mail address, through the Beaufort County Human Services Alliance weekly newsletter and to community groups. Other class sites for electronic administration of the survey included all hospital employees, classes of Beaufort High School health sciences students, the AccessHealth Lowcountry Advisory Council, the KidFest planning committee, University of SC Beaufort nursing students, Marine Corps Community Services staff, PASOS community health workers, clients of the hospital’s mobile wellness van, the Collaborative Organization of Services for Youth board, and to readers of *La Isla Magazine*.

Hard copies of the survey were administered in the following areas: Faith Memorial Baptist Church on St. Helena Island, Second Mount Carmel Baptist Church in Burton, to members of the hospital’s Collins Birthing Center staff, the BMH General Cancer Support Group, the BMH Breast Health Center and Infusion Center, the hospital’s Patient and Family Advisory Council, to clients of the hospital’s CHiP mobile wellness van, the Beaufort County Detention Center staff and inmates, the Good Neighbor Free Medical Clinic of Beaufort, health science classes at Beaufort High School (Beaufort County) and Ridgeland Hardeeville High School (Jasper County) and to members of the Paula Williams Memorial Breast Cancer Support Group.

Scoring was based on three criteria: 1.) ability to evaluate outcomes of implemented strategies, 2.) size, and 3.) seriousness of the health problem. Within each criterion, numerical ratings were assigned. For example, to evaluate outcomes, scores are based on what data is available (anecdotal, baseline, trend). The size of the health problem is based on the percentage of the population affected by a particular problem. To evaluate the seriousness of a health problem, scores are based on the impact of a health problem (i.e. the nature of the problem, does it cause long term illness, death rates, hospitalizations, economic and community impact, etc.).

**Results**

The top three health problems identified through the ranking process of the 1,532 English survey responses to the question “What do you think are the most pressing problems in our community?” in descending order and combined due to like subject area were: 1.) ability to pay for health care/cost of health care/prescription medication too expensive, and lack of health insurance 2.) drug abuse-prescription medications/illegal substance/, alcohol dependency or abuse, mental health issues and 3.) obesity and cancer. The 40 Spanish survey respondents also cited ability to pay for health care as the most significant health problem. Qualitative analysis further supports the results of the survey with the top three health problems being cost of health care, behavioral health issues and chronic disease relating to obesity/cancer. Although obesity is not, in and of itself, excessive compared to Beaufort County data, South Carolina and national benchmarks, it is a precursor to other chronic diseases. Table 18 displays the prioritization of the needs.

**Table 18: Beaufort Memorial Hospital Survey Prioritization of Health Needs 2019**

Category*	Description	Number of Responses**	Percentage	Ranking
Cost of health care	Ability to pay for health care, cost of	3,677	63.64%	1

	health care, lack of health insurance, prescription medication too expensive, lack of transportation to health care services			
Behavioral health***	Alcohol dependency or abuse, alcohol underage binge drinking or abuse, drug abuse-prescription medications, drug abuse-illegal substances, mental health, tobacco use/smoking among adults, tobacco use/smoking among teenagers, domestic violence and child abuse	3,000	Combined multiple data sets	2
	Drug abuse-illegal substances	520	33.94%	
	Drug abuse-prescription medications	491	32.05%	
	Mental Health	408	26.63%	
	Alcohol-dependency or abuse	395	25.78%	
	Tobacco use/smoking among adults	322	21.02%	
	Tobacco use/smoking among teenagers	268	17.49%	
	Domestic violence	240	15.67%	
	Alcohol-underage drinking or abuse	211	13.77%	
	Child Abuse	145	9.46%	
Chronic Disease	Obesity in adults	652	42.56%	3
	Cancer	566	36.95%	

	Obesity in children and teenagers	452	29.50%	
Other health concerns	Lack of dental care	290	18.93%	
	Lack of prenatal care	90	5.87%	

*\*A total of 1,532 responses to the survey question “What do you think are the most pressing problems in our community” were received from the 1,643 English surveys completed. The categories reflect the top 3 consolidated issues and percentages based on survey responses.*

*\*\* The number of responses is greater than the sample size due to the “check-off” nature of the surveys, in which participants could respond to multiple questions.*

*\*\*\*Beaufort Memorial Hospital currently does not have a service line to address chemical dependency/addiction in an inpatient setting. The strategies for the 2019 CHNA will cover substance abuse in outpatient areas only.*

## 2016 Community Health Needs Assessment Update of Implementation Strategies

The 2016 Community Health Needs Assessment (CHNA) was adopted by the Beaufort Memorial Hospital (BMH) Board of Trustees in September 2016 and was subsequently posted on the BMH website for public availability. Community health needs were identified through both qualitative and quantitative data collection and prioritized utilizing a criterion weighting methodology. Three strategies were chosen to address the prioritized needs. What follows is a review of the implementation activities that have transpired between September 2016 and August 2019.

### Strategy 1:

**BMH will continue to build capacity to prevent and address obesity.**

#### Implementation Activities:

*Provide physical activity and other lifestyle change programs for the community, including employees, through the hospital’s LifeFit Wellness Center.*

Free memberships to the LifeFit Wellness Center were promoted to all employees. This benefit is provided through the orientation process for new employees and by Employee Health. Programs offered for the community and employees include spin classes, yoga, Pilates, tai chi, barre, Body Pump classes, a 12-week program called Body Makeover, circuit training and Wellness Wednesdays (specialized health education topics with screenings offered for hospital employees).

**FY 2017:** The total membership of the LifeFit Wellness Center was 2,522 which included employee membership of 1,296.



**FY 2018-** The total membership of the LifeFit Wellness Center was 2,782 which included employee memberships of 1,301.

**FY 2019-** The total membership of the LifeFit Wellness Center (October 2018-June 2019) is 2,877 which includes employee memberships of 1,313. A second work out facility on the hospital campus was opened in March 2019 for employees only providing 24-hour member access which has been utilized more than 1,468 times.

*Provide financial assistance for the LifeFit Wellness Center membership (consistent with the BMH financial assistance guidelines.)*

**FY 2017-** Provided financial assistance to 75 persons compared to 55 in the previous year. Financial assistance for membership allows the recipients to participate in all group fitness classes as well as access to the LifeFit Wellness Center for individual physical activity.

**FY 2018-** Provided financial assistance to 44 persons for membership which allowed the recipients to participate in all group fitness classes as well as access the LifeFit Wellness Center for individual physical activity.

**FY 2019** (October 2018-June 2019)- To date 38 persons have received financial assistance for membership which allows the recipients to participate in all group fitness classes as well as access to the LifeFit Wellness Center for individual physical activity.

*Continue to provide broad range of physical activity opportunities through group fitness classes, personal training, yoga, spinning and other types of offerings.*

**FY 2017** -Through the hospital's LifeFit Wellness Center group fitness classes such as spin, yoga, Pilates, tai chi, barre as well as personal training were offered with the addition this year of 1.) Body Pump classes which focus on weight lifting, 2.) strength and conditioning classes, 3.) the twelve-week Body Make-over series which includes nutrition education, personal motivation assessment, nutritional consultations, healthy cooking demonstrations and small group fitness classes and 4.) circuit training classes. In addition, a series called Wellness Wednesdays was initiated for employees to offer health education information on a variety of health topics in addition to a one-day Wellness and Benefits Fair.

**FY 2018-**The same offerings were available for the community and employees. The hospital initiated a Well at Work program for local employers which provides occupational health services, pre-employment screenings, and access to other health screenings and programs. The enrolled companies are offered a corporate discount for their employees to become members of the hospital's LifeFit Wellness Center.

**FY 2019-** (October 2018-June 2019)-The same physical activity offerings were available with the addition of a second workout facility for hospital employees which opened in March 2019. The Well at Work initiative has enrolled 75 companies representing 12,911 covered lives.

*Enhance BMH childhood obesity Healthy Kids campaign in partnership with pediatric providers.*

Develop physical activity opportunities for children in a group setting

**FY 2017**-Due to space constraints in the LifeFit Wellness Center, transportation challenges and staffing issues, it has not been possible to provide set aside physical activities for children in a group setting.

In addition, the decision was made to return to regular pediatric medical nutrition therapy to address childhood obesity as a billable service after the first year of the Healthy Kids Campaign (October 1, 2015-September 30, 2016) when the dietary consultations were offered at no cost in a 12-month pilot project. More than 375 referrals were received, and 300 children were seen for an initial dietary consultation with physical activity recommendations in a joint effort of the Beaufort Memorial Hospital LifeFit dietitians with the dietitians at Beaufort Jasper Hampton Comprehensive Health Services (the area's Federally Qualified Health Center).

**FY 2018-2019**- The Beaufort Memorial LifeFit dietitians continued to provide medical nutrition therapy and physical activity recommendations for children in two locations-the LifeFit Wellness Center on the Beaufort campus of Beaufort Memorial Hospital and at Bluffton Medical Services in Bluffton which is located 26 miles to the south in Beaufort County. In FY 2018 45 children were served by the dietitians at Beaufort Memorial Hospital along with 54 (to date) in FY 2019.

### **Enhance the Healthy Kids Campaign program in southern Beaufort County via LifeFit dietitians at Bluffton Medical Services.**

**FY 2017**-The LifeFit dietitians provided consultations for medical nutrition therapy for 33 children in Bluffton compared to 21 children in the previous year of 2016. Dietary consultations were offered in Bluffton two days a week at the hospital's facility. The dietitians also continued to consult with Bluffton pediatric providers to promote the medical nutrition therapy consultations regarding obesity.

**FY 2018** – The dietitians provided consultations for 18 children and have seen 20 children to date in FY 2019.

### ***Continue and increase participation in the South Carolina Medical Association (SCMA) Childhood Obesity Task Force.***

LifeFit Community Health participated in the quarterly meetings and shared data on the hospital's Healthy Kids Campaign until winter 2018 when documentation of the SCMA Task Force's efforts was rolled into the South Carolina Scale Down Project 2014-2019 or ScaleDown.org. The SCMA Childhood Obesity Task Force meetings were then discontinued. Another South Carolina Obesity Project will be initiated in 2020.

### ***Implement use of toolkit in Spanish when available for pediatric providers from SCMA Childhood Obesity Task Force.***

The South Carolina Medical Association Childhood Obesity Taskforce developed a toolkit for pediatric providers with materials consisting of the Let's Go 5-2-1-0 brochures and questionnaires for ages 2-9 and 10-18. These materials were printed with funding provided by the Beaufort Memorial Hospital Foundation and were distributed to pediatric providers affiliated with the hospital. The Spanish translation of the toolkit materials became available in December 2016. In FY 2017 the pediatric practices requested 1,075 sets of Spanish brochures and 1,725 Spanish questionnaires for pediatric patients as well as 800 sets of brochures in English and

1,800 English questionnaires which were provided by LifeFit Community Health. The pediatric providers affiliated with the hospital serve Beaufort, Jasper and Hampton Counties.

**FY 2018**-Pediatric providers requested 50 sets of Spanish brochures and 300 Spanish questionnaires for pediatric patients as well as 250 sets of brochures in English and 1,310 questionnaires which were provided by LifeFit Community Health.

**FY 2019**- (October 2018-June 2019)-To date the pediatric providers have requested 200 Spanish questionnaires and 100 English questionnaires to be used with the brochures previously distributed. The program has been taken over by the pediatric medical providers after a successful support launch by the hospital.

*Provide updates on BMH Healthy Kids Campaign efforts to the South Carolina Medical Association (SCMA) Obesity Task Force.*

Beaufort Memorial's Community Health staff has participated in the quarterly SCMA Childhood Obesity Task Force meetings in Columbia, South Carolina and has presented updates on the childhood obesity efforts at Beaufort Memorial Hospital. The chairman of the task force, a pediatrician from the Medical University of South Carolina, visited the LifeFit Wellness Center to learn more about the hospital's efforts. In the winter of 2018, the SC Medical Association Childhood Obesity Task Force was rolled into the ongoing SScale Down Initiative 2014-2019 ([scaledown.org](http://scaledown.org)) of the South Carolina Obesity Action Plan. This is a collaboration of more than 100 partners across the state coordinated by the South Carolina Institute of Medicine and Public Health and the South Carolina Department of Health and Environmental Control. The quarterly SCMA Obesity Task Force meetings were then discontinued.

*Participate in community efforts to promote healthy eating and active living.*

**FY 2017**-Through the hospital's Speakers Bureau, health fairs and hospital tours for school groups coordinated by LifeFit Community Health, there were 64 community events involving 132 employees who impacted 3,608 attendees in Beaufort and Jasper Counties. These events included the promotion of healthy eating and active living. Three community presentations promoted lactation and served 39 expectant women. In this time period, one of the hospital's Baby University classes, Breastfeeding, which was offered monthly served 95 expectant parents to promote breastfeeding for their newborns.

**FY 2018**- There were 42 speaking engagements by 35 employees with 2,864 community residents in attendance. These included targeted presentations such as one at Sun City Hilton Head on supplements with 50 in attendance. The monthly Breastfeeding classes for expectant parents served 128 people. Four special presentations to military expectant families, to promote healthy pregnancies (including nutrition and breastfeeding), served 70.

**FY 2019-** (October 2018-June 2019) Efforts to promote healthy eating and physical activity include 20 speaking engagements by 10 employees with 1,107 community residents in attendance. The monthly Breastfeeding classes for expectant parents has served 91. Three hospital employees gave four presentations to expectant military families to promote healthy pregnancies, healthy nutrition and breastfeeding which served 132.

*Provide education to school district personnel on childhood obesity concerns in Beaufort and Jasper Counties.*

**FY 2017-**An update on the number of children who have been served by the Healthy Kids Campaign by the hospital's LifeFit Wellness dietitians and the partner dietitians at Beaufort Jasper Hampton Comprehensive Health Services was provided to school district personnel. More than 140 children had received dietary consultations and physical activity information during this period.

**FY 2018-2019** Although the Healthy Kids Campaign is no longer active the childhood obesity efforts are communicated to Beaufort and Jasper County School district personnel.

*Engage in community activities to promote physical activity and healthy eating through the CHiP Mobile Wellness Van, community partners, and other LifeFit Wellness Services.*

The CHiP mobile wellness van distributed health education to include physical activity and nutrition information to clients in both Beaufort and Jasper Counties.

**FY 2017-** 1,055 new clients received screenings and health education among the total of 2,678 clients who received services in 126 various events.

**FY 2018-** 1,073 new clients received screening and health education among the total 2,738 clients served in 144 events.

**FY 2019-** (October 2018-June 2019) 631 new clients have received screenings and health education among the 1,870 served in 79 events.

The hospital's efforts through social and print media and community outreach promoted physical activity and healthy eating through the following:

**FY 2017-**The LifeFit Wellness Services wellness coaches, dietitians and health educators along with other hospital personnel, participated in 39 presentations and/or health fairs to promote physical activity and healthy eating which served 2,153 people in the Beaufort and Jasper County communities.

The hospital's LifeFit Wellness Center, which promotes physical activity through the workout facility served 2,522 members, and the dietitians who promote healthy eating served 2,800. The LifeFit Wellness Services programs and services were promoted through the hospital's website, the *Living Well Magazine* (30,000 issues distributed), the *You First* employee newsletter, new employee orientation, and the LifeFit Wellness Services Facebook page as well as being highlighted in the hospital's televised anthem ad.

**FY 2018-** There were 41 speaking engagements by 34 employees to promote physical activity and healthy eating with 2,814 community residents in attendance. FY 2019-(October 2018-June 2019) In this time period, 20 speaking engagements/health fairs with 10 hospital employees to promote physical activity and healthy eating have been conducted with 1,107 in attendance.

Promotions for physical activity and healthy eating were provided in the hospital social media, the LifeFit Wellness Services Facebook page, special promotions in community newspapers, the LifeFit Wellness Services rack cards (5,000) in providers' offices, emails to employees, new employee orientation, articles in the *You First* hospital newsletter, and television news segments about services. In 16 healthy living blogs on physical activity, nutrition topics and lifestyle management topics, there were 9,854 site entrances and 11,404-page views.

**FY 2019-** Promotions for physical activity and health eating in the community were available through the hospital's social media, in print news about special services and event, through rack cards distributed in the providers' offices, through television news segments about LifeFit Wellness Services, in articles in the *You First* employee newsletter, the hospital's Food and Nutrition Services *FAN* newsletters, new employee orientation and in a monthly e-newsletter to 75 Well at Work employers with more than 11,000 employees. To date 15 healthy living blogs on physical activity, nutrition topics and lifestyle management have had 10,827 site entrances and 12, 630-page views. A special publication, *How We Heal- Report to the Community*, including articles on LifeFit Wellness Services, the Well at Work program, the CHiP mobile wellness van and community partners was distributed to 26,000 households.

## Strategy 2:

### **BMH will continue to address chronic disease management.**

#### **Implementation activities:**

#### *Increase community awareness of chronic disease prevention.*

Promote CHiP mobile wellness van and screening services.

**FY 2017-2018-**The CHiP mobile wellness van was promoted through the hospital's website, the "on hold" telephone messages of the hospital, on the LifeFit Wellness Services Facebook page, through the community screening events where the van is present including special partnership screening events, and through the BMH patient handbook with more than 10,000 copies distributed annually in English and 400 in Spanish. Until the final issue in Summer 2018 it was also promoted regularly through the Hospital's *Living Well* magazine (30,000 distributed annually) and was featured in the hospital's television anthem ad.

**FY 2019-** In addition to the hospital's website, the LifeFit Wellness Services Facebook page, through distribution of the patient handbook (10,000 annually), through the community screening events and partnership special screening events, the mobile wellness van program was also promoted in the *How We Heal- Report to the Community* which was distributed to 26,000 households.

### *Provide low cost vascular screenings.*

**FY 2017**-There were 230 vascular screenings (ankle brachial index, aortic abdominal ultrasound, and carotid artery ultrasound) provided in this time period to community members and hospital employees at a reduced rate. The screenings were promoted through the hospital's marketing efforts, through LifeFit Wellness Services and through the Employee Health department.

**FY 2018**- There were 259 vascular screenings (ankle brachial index, aortic abdominal ultrasound, and carotid artery ultrasound) performed and offered at a reduced rate for the community.

**FY 2019** (through third quarter) - To-date, 223 people have received the vascular screenings (ankle brachial index, aortic abdominal ultrasound, and carotid artery ultrasound) at a reduced rate.

### *Increase promotion of the Diabetes Care Center.*

**FY 2017**- Articles regarding the services of the LifeFit Diabetes Care Center dietitians and related services were published in *The Island Packet* newspaper (circulation 22, 225), the Sun City Hilton Head newspaper *Sun City Today* (circulation 7,900), *Pink Magazine* of Beaufort County (circulation 20,000) and the hospital's *Living Well* magazine (distribution of 30,000 until summer 2018.) A Diabetes Care Center diabetic educator gave presentations to several Bluffton primary care physicians as well as to Beaufort Memorial Hospital physicians at the Lowcountry Medical Group clinic. In addition to providing medical nutrition therapy for patients, the Diabetes Care Center dietitians gave eight presentations to the community with a total of 186 in attendance.

**FY 2018** In addition to promotion in the hospital's social media, online blogs, and the LifeFit Wellness Services Facebook page, a small container garden class was offered to the community. The Clinical Nutrition Manager gave a presentation on supplements to 50 community members, and two dietitians presented nutrition information to 25 community members.

**FY 2019**-Promotion of the Diabetes Care Center continues through the hospital's social media efforts and in community publications. A blog post was offered on Diabetes Do's and Don'ts, which received 152-page views. Two hospital dietitians gave presentations on healthy eating which served 71.

### *Expand efforts regarding tobacco cessation program.*

**FY 2017-FY 2019**-The hospital offers the American Lung Association's *Freedom from Smoking* eight class series which is taught by prevention specialists from the Beaufort County Alcohol and Drug Abuse department. Participants in this program also receive a two-month free membership to the LifeFit Wellness Center. The *Freedom from Smoking* series is promoted through the hospital's website, the Employee Health department, the LifeFit Wellness Center, the hospital newsletter *You First*, the *Living Well* Magazine and on the LifeFit Wellness Services Facebook page. At least one series is offered annually. In addition, materials on the telephone-based counseling program *Quitline* of the South Carolina Department of Health and Environmental Control are distributed to inpatients who declare that they are tobacco users. All mental health inpatients receive tobacco cessation resource information upon discharge. The *Freedom from Smoking* program is also promoted in the 10,000 patient handbooks in English and 400 in Spanish that are printed annually for inpatients and flyers are distributed through the hospital's primary care practices.

*Engage “MY BMH” patient portal for specific disease prevention and education efforts to specific populations.*

The original software adopted for the patient portal was changed to provide more robust capabilities. The software purchased in 2017 has the capability of providing specific disease prevention health education, but this aspect of the software has not yet been implemented. For the first time, in 2019, the patient portal was used to distribute the Community Health Needs Assessment survey to the hospital’s patients.

*Support AccessHealth Lowcountry, a program for the uninsured, in chronic disease prevention opportunities.*

Engage AccessHealth Lowcountry nurse in health education as well as screening of clients.

**FY 2017**-The AccessHealth Lowcountry nurse navigated clients who had a positive Fecal Immunoassay Test or FIT test result which resulted in 25 colonoscopies, and she provided colorectal cancer education for each client. This initiative was part of a grant funded program to offer free colonoscopies to identified clients of the AccessHealth Lowcountry program and for patients of the Beaufort and Jasper Counties area free clinics.

**FY 2018**- The Access Health Lowcountry nurse navigated 14 patients and provided colorectal education. In addition, the program began airing colorectal cancer educational messages on Praise Radio 94.5 targeting the African American community in November 2017 which are ongoing through October 2019.

**FY 2019**- To date the AccessHealth Lowcountry nurse has navigated 26 patients and provided colorectal education. The program provided colorectal cancer screening messaging in *La Isla Magazine* for the Latino community from February 2018-March 2019.

*Identify disease prevention/intervention efforts with AccessHealth Lowcountry nurse.*

**FY 2017**-The AccessHealth Lowcountry nurse provided health education sessions for 436 clients which included chronic disease prevention and counseling on medications. She participated in numerous community events where health education and resource information were offered.

**FY 2018**- The AccessHealth Lowcountry nurse enrolled 284 clients, provided health education to the clients, made hospital visits, completed screenings through a partnership with the Bluffton Jasper Volunteers in Medicine in the Town of Ridgeland, and participated in 3 community events.

**FY 2019**-In this period an additional nurse case manager was added to the program. To date the two nurses have provided chronic disease management and medication counseling to 260 clients and participated in three community events.

*Partner with other healthcare providers for screenings related to chronic disease prevention.*

**FY 2017-** Partnership with South Carolina Department of Health and Environmental Control (SC DHEC) - The Community Health Improvement program of the hospital partnered with SC DHEC to offer free screenings for uninsured and underinsured residents of Beaufort and Jasper Counties through a pharmaceutical assistance program called Med-I-Assist which provided free services in the Lowcountry. Clients of Med-I Assist were encouraged to attend free screenings offered in Beaufort and Jasper Counties. SC DHEC grant funding allowed the hospital's CHiP mobile wellness van to offer glucose, blood pressure, cholesterol and Prostate Specific Antigen (PSA) screenings, and the Community Health nurse practitioner offered cancer screenings (skin cancer checks, clinical breast exams and prostate exams) at the six Med-I-Assist special events which served 127 community members.

**FY 2018-** The CHiP mobile wellness van partnered with the SC DHEC Med-I Assist program to offer glucose, blood pressure, cholesterol, and PSA screenings along with other cancer screenings at 12 community events which screened 385 Beaufort and Jasper County residents.

**FY 2019-**October 2018-June 2019- The CHiP Mobile Wellness Van has partnered with the Med-I-Assist program to offer glucose, blood pressure, cholesterol, and PSA screenings, along with other cancer screenings offered by the nurse practitioner, at 5 community events which served 200 community members.

Partnership-with Neighborhood Outreach Connection (NOC), a non-profit empowerment program that provides education, health screenings, healthcare and workforce development for residents of several low-income housing apartments complexes in Beaufort, Bluffton and Hilton Head. The hospital's CHiP mobile wellness van works collaboratively with the Volunteers in Medicine Clinic on Hilton Head Island and the Beaufort health department of SC DHEC to provide screenings for hypertension, diabetes, breast and prostate cancer and HIV.

**FY 2017-** the CHiP van provided screenings for 159 residents at 5 Neighborhood Outreach Connection events. In FY 2018 there were 7 events with 142 screenings provided by the van, and to date in FY 2019 there have been 5 screening events serving 106 residents.

Partnership- The Beaufort County Marine Corps Community Services partners with LifeFit Community Health so that representatives of various hospital departments may participate in health fairs at the Marine Corps Air Station and Marine Corps Recruit Depot and also at events for military families held to promote physical activity, healthy eating, healthy pregnancy/parenting, heart health and cancer prevention.

**FY 2017-** More than 600 military active duty and family members were served by hospital representatives at 5 events.

**FY 2018-**At 7 military events, 7 employees of the hospital shared health education for 286 active duty military and family members.



**FY 2019-**(October 2018-June 2019) In 4 military events, 3 hospital employees participated to promote healthy eating and active living for expectant military families, and 132 military or dependents were served. The CHiP mobile wellness van participated in two military screening events and served 34.

### *Capture employee health efforts addressing chronic disease pathways and expand employee wellness participation via employee health.*

Hospital employees are assessed during the mandatory annual health assessment in their birthday month.

**FY 2017-** basic and advanced wellness screenings were offered by Employee Health. Those who selected the gold level for their healthcare plan underwent additional assessment for risk of chronic diseases. Nine hundred thirty-six employees out of 1410 participated in the wellness screenings. All who did not have a primary care provider were referred and a Primary Care Provider appointment was established.

**FY 2017-**Employee Health saw 1431 employees; 918 participated in advanced wellness screenings. All staff at risk for chronic conditions were followed by their primary care physicians or referred to a primary care provider if they didn't have one.

**FY 2018-**In October 2018 the Employee Health office became part of a new Express Care and Occupational Health clinic. Some of the advanced employee screenings were discontinued although the annual health assessments continue for all employees.

Telehealth was also implemented in December 2017 and titled *BMH Care Anywhere*. There were a total of 512 telehealth visits which included 112 employees. Employees received a discounted office visit at their initial telehealth visit.

**FY 2019-** There have been 3,177 visits by employees to the Express Care Clinic. Hospital employees can now access a provider seven days a week through the Express Care Clinic or through the hospital's telehealth program *BMH Care Anywhere*. The *BMH Care Anywhere* is promoted through the hospital's website, social media, print media, and throughout the hospitals' clinics.

Through third quarter, there have been 241 telehealth visits, which include 9 employee visits.

### *Promote the CHiP mobile wellness van and screening capabilities.*

The CHiP mobile wellness van is promoted through the hospital website, the "on hold" telephone messages, through the LifeFit Wellness Services Facebook page, at community events in Beaufort and Jasper Counties when the van is present, in the hospital's patient handbook (10,000 copies annually in English, 400 in Spanish), in communication with faith-based organizations and businesses, and in the *Living Well* magazine (distribution of 30,000) published until Fall 2018. The mobile wellness van was featured in the 2019 *How We Heal -Report to the Community* which was distributed to 26,000 households.

### *Continue support of BMH colorectal screening outreach efforts.*

**FY 2017-**The AccessHealth Lowcountry program for the uninsured continues to lead these outreach efforts for the hospital. A grant to the Beaufort County Human Services Alliance was received for the

expansion of colorectal cancer screenings with the use of Fecal Immunoassay Tests (FIT) tests for uninsured patients within the Beaufort Memorial Physician Partners primary care practices. The FIT tests are used to detect human blood in fecal samples, which may indicate a need for a follow up colonoscopy. Other area health care providers, to include Beaufort Jasper Hampton Comprehensive Health Services clinics, Bluffton Jasper Volunteers in Medicine, the Good Neighbor Free Clinic of Beaufort and Volunteers in Medicine Hilton Head Island have all previously received grant funds to provide free FIT Tests. Currently, through a cooperative agreement with these health care providers and Beaufort Memorial Physician Partners, the follow-up colonoscopies are provided by BMH and a BMH gastroenterologist. Lowcountry Anesthesia and Pathology Services of Beaufort also participate in this initiative and provide services relating to the FIT Tests and follow-up colonoscopies. In FY 2017, there were 16 colonoscopies provided. In addition, the hospital's AccessHealth Lowcountry director was invited by Beaufort Jasper Hampton Comprehensive Health Services to be a presenter at the American Cancer Society Links to Care Pilot Evaluation meeting in Washington, DC where an update was presented on other grant funded programs to provide colorectal screenings.

**FY 2018** –The AccessHealth Lowcountry program continued to coordinate these efforts and as a result the hospital provided and processed FIT tests for 7 patients, the Bluffton Jasper Volunteers in Medicine clinic processed 20, the Good Neighbor Free Medical Clinic of Beaufort processed 28 and the Volunteers in Medicine free clinic on Hilton Head Island processed 123. The hospital also provided 14 colonoscopies for patients who had a positive FIT test.

**FY 2019-** To date the hospital's physician partners have provided and processed 3 FIT Tests, the Bluffton Jasper Volunteers in Medicine have processed 12, the Good Neighbor Free Medical Clinic of Beaufort has processed 30, and the Volunteers in Medicine Clinic on Hilton Head Island has processed 165. In addition, the hospital has provided 26 colonoscopies for the hospital and partner organizations' patients who had positive results on the FIT Test.

### *Continue involvement of Together for Beaufort County and other community partners.*

Since 2006 Beaufort County Administration has coordinated a community indicators project called "Together for Beaufort County." It is a community-wide collaborative effort to identify and address specific issues confronting the citizens of Beaufort County. The group is sponsored by the Beaufort County Human Services Alliance, an initiative that allows all Beaufort County residents to work together in various work groups/coalitions to improve the county's quality of life in the areas of environment, health, social wellbeing, economy and education. Currently there are four hospital employees who participate in one or more of the following Together for Beaufort County coalitions: The AccessHealth Lowcountry Advisory Council, the Adequacy of Prenatal Care Pathways to Parenthood Coalition, and the Collaborative Organization of Services for Youth (COSY)/Collaborative Organization of Services for Adults (COSA) Coalition in addition to participating in quarterly Beaufort County Human Services Alliance meetings.

### *Continue support of Bridge to Home Transitional Care program and AccessHealth Lowcountry program.*

The Bridge to Home Transitional Care program or BTH to prevent avoidable hospital readmissions was funded for the first five years (2012-2017) through The Duke Endowment. Effective June 2017, the program, now

implementing a home visitation program called Care Transitions Initiative or CTI, is staffed by two nurses and an administrative assistant and is funded by the hospital. The hospital also provides support services to include a pharmacist and pharmacy technicians who provide medication reconciliation for Bridge to Home patients and others as well as conduct research on pharmaceutical assistance programs so patients may obtain free or low-cost medications to assist them in dealing with chronic diseases. The Bridge to Home program is supported by the hospital's LifeFit Community Health program which assures its representation at community events such as health fairs and community forums.

**FY 2017**-The Bridge to Home Transitional Care Program served patients in the hospital to prepare them for discharge and assess their needs. The nurses made 47 home visits to assess patients' health and review medication and social needs.

**FY 2018** -The lead transitional care program nurse attended the Care Transitions Intervention (CTI) program training offered through the South Carolina Hospital Association and began seeing patients for home visits in January 2018.

**FY 2019**- Approximately 1000-1400 patients were assessed or educated in the hospital for a Bridge to Home CTI home visit. To date the two BTH nurses have conducted more than 235 home visits. Community Health provided an in-service on food and housing insecurity resources for the staff of Bridge to Home Transitional Care.

The Access Health Lowcountry (AHL) Program serves uninsured residents of Beaufort and Jasper Counties ages 19-64 and is housed on the campus of the hospital. The hospital provides in-kind support with office space, technology and overhead expenses. Additional financial support continues to be provided by The Duke Endowment. The AHL clients may qualify for financial assistance for hospital services. Access Health Lowcountry clients receive a primary care medical home as well as specialty care services and pharmaceutical assistance coordinated by the program. The program's efforts are also made to prevent avoidable emergency department health care visits.

The number of AccessHealth Lowcountry clients has risen each year as more uninsured residents are identified. In fiscal year 2017, 582 clients were served. In Fiscal year 2018, 684 clients were served. In fiscal year 2019 (October 2018-August 2019) 817 clients were served.

### **Strategy 3:**

#### **BMH will support programs addressing social determinants of health.**

##### **Implementation Activities:**

*Increase support of AccessHealth Lowcountry, a program for the uninsured of Beaufort and Jasper Counties.*

As stated under Strategy 2 the hospital provides in-kind support of office space, technology and provides access to reduced cost for primary and specialty care for AccessHealth Lowcountry clients. The hospital also provides labs and basic imaging at no cost to the clients.

**FY 2017**- To address a need for dental care for uninsured patients, a charitable dental initiative with the Sea Island Rotary Club of Beaufort, Beaufort Jasper Hampton Comprehensive Health Services (BJHCHS,

the area's Federally Qualified Health Center) and the free clinic Bluffton Jasper Volunteers in Medicine was established, called the Smile Mobile. A mobile health van owned by BJHCHS obtained necessary retrofitting of a second dental operatory area with funds provided by the Sea Island Rotary Club of Beaufort, AccessHealth Lowcountry grant funds and the free clinic, Bluffton Jasper Volunteers in Medicine. The Smile Mobile now serves uninsured patients one day a month in rotating sites of the Sheldon Township, St. Helena Island and the town of Ridgeland in Jasper County. Referrals for the free dental care come from the Good Neighbor Free Clinic of Beaufort, Bluffton Jasper Volunteers in Medicine clinic, AccessHealth Lowcountry and from the hospital's emergency department.

Client utilization of the Smile Mobile since inception in 2017: FY 2017- 60+ uninsured clients, FY 2018- 108 uninsured clients, and to-date for FY 2019-88 clients have received dental care.

### *Support United Way and other agencies' participation in partnerships regarding health care transportation.*

FY 2017- The Executive Director of the Transportation Association of America attended special meetings arranged by the hospital's AccessHealth Lowcountry program with participation of the United Way of the Lowcountry. Discussions continued to develop transportation alternatives within our region. A pilot program, funded by grant funds for patients of the Volunteers in Medicine Hilton Head Clinic with transportation provided by Palmetto Breeze, Beaufort County's Lowcountry Region mass transportation provider, demonstrated a need for marketing of special routes if such routes were to be established for health care visits. Transportation challenges in the county continue to be researched by the United Way with Beaufort Memorial as a partner in this process. Due to the rural nature of many geographic areas of Beaufort and Jasper Counties, it is not yet possible for the Lowcountry Regional Transit Authority, Palmetto Breeze, to establish fixed routes for residents so they may access health care appointments.

### *Improve support of the Good Neighbor Free Medical Clinic of Beaufort through collaborative programmatic efforts.*

In addition to the hospital's provision of laboratory, imaging, mammography, lab and other services for the clinic's patients, the Good Neighbor Free Medical Clinic of Beaufort (GNFMC) now has access to Fecal Immunoassay Tests (FIT) for colorectal screenings in the aforementioned program coordinated by the hospital's AccessHealth Lowcountry (AHL) program. AHL also provides specialty care navigation for the GNFMC's patients which may be arranged with health care providers in Beaufort County or in Charleston, South Carolina.

**FY 2017-** The hospital provided support for clinic procedures totally \$539,410.27 and a \$50,000 donation with approximately 500 patients served.

**FY 2018** – The hospital provided support for clinic procedures totally \$512,041.99 and a \$50,000 donation with 577 patients served.

**FY 2019** (October 2018 – June 30, 2019)-The hospital has provided support for the clinic's procedures totally \$443,679.79 with a donation of \$25,000 to date. Currently 611 patients are served.

# Community Health Resource Inventory

In accordance with the IRS proposed regulations governing the submission of a Community Health Needs Assessment (CHNA), an inventory of existing community resources available to address the needs identified in the CHNA Survey was developed and is displayed in Table 19. Table 20, which follows on page 61, delineates the identified needs, whether it is being addressed by Beaufort Memorial Hospital or other community resources.

**Table 19: Community Health Resource Inventory**

	Name of Resource	Description	Population Served
1.	ABLE – The Disabilities Foundation of Beaufort County	A non-profit organization that supports special services for individuals with developmental disabilities. ABLE grants fund a summer programs for disabled children and a mentoring program for adults. <a href="http://ablefoundationbc.org">http://ablefoundationbc.org</a>	Beaufort County
2.	Access Network	Care management for persons affected by HIV-AIDS, their families, friends, care-partners, emergency assistance for medication, housing, utilities, nutrition, and transportation. Free counseling and testing. <a href="http://www.theaccess-network.org">http://www.theaccess-network.org</a>	Beaufort, Colleton, Hampton and Jasper Counties
3.	AccessHealth Lowcountry of Together for Beaufort County	AccessHealth Lowcountry is a program to help citizens ages 19 to 64 to find medical care with providers who offer free or sliding fee scale services. They work with low income, uninsured adults, ages 19-64, in Beaufort and Jasper counties. In addition to helping citizens find a primary care provider, they assist with prescription drugs and transportation. <a href="http://www.accesshealthlowcountry.org">http://www.accesshealthlowcountry.org</a>	Beaufort and Jasper Counties
4.	Adequacy of Prenatal Care Coalition of Together for Beaufort County, now called Pathways to Parenthood	The Adequacy of Prenatal Care Coalition works to increase the percentage of births reported as having received adequate prenatal care throughout Beaufort County. Women who see a health care provider regularly during pregnancy have healthier babies, are less likely to deliver prematurely and are less likely to have other serious problems related to pregnancy. Beaufort Memorial Hospital is a founding member of the coalition which formed in 2006. <a href="http://www.BeaufortBaby.com">http://www.BeaufortBaby.com</a>	Beaufort and Jasper Counties
5.	AGAPE Family Life Center	Provides a food bank, clothing, GED classes, life skills, after school programs, summer camp, exercise classes, facility rentals.  <a href="https://www.agapeflc.org">https://www.agapeflc.org</a>	Jasper County; any county for GED classes
6.	Al-Anon Family Group	The Al-Anon Family Groups are a fellowship of relatives and friends of alcoholics who share their experience, strength, and hope in order to solve their common problems. <a href="http://al-anon-sc.org">http://al-anon-sc.org</a>	Beaufort County
7.	Alcoholics Anonymous	Alcoholics Anonymous® is an international fellowship of men and women who share their experience, strength and hope with each other that they	Beaufort County

		<p>may solve their common problem and help others to recover from alcoholism.</p> <p><a href="http://www.area62.org/lookup.php">http://www.area62.org/lookup.php</a></p>	
8.	American Cancer Society	<p>Services for all cancer diagnoses. Provides access to referrals for financial assistance, temporary housing, wigs, transportation and prescription assistance.</p> <p><a href="http://www.beaufortsc.org/services/non-profits/american-cancer-society/">http://www.beaufortsc.org/services/non-profits/american-cancer-society/</a></p>	Nationwide non-profit available to all cancer patients and their caregivers
9.	American Red Cross – Palmetto Chapter	<p>Disaster Services – 24/7 single family and large disasters provides emergency food, shelter, and emotion support; Disaster Preparedness and Education; Service to the Armed Forces – 24/7 emergency communications, counseling, financial assistance, and other services to members of the Armed Forces, veterans and military families; Lifesaving Blood; CPR, First Aid and AED certifications; Babysitting and Caregiving training; Swim and Water Safety; and International Service, which includes family tracing during disasters and conflicts.</p> <p><a href="http://www.redcross.org/sc/north-charleston">http://www.redcross.org/sc/north-charleston</a></p>	Disaster – Colleton, Hampton, Jasper, and Beaufort Counties Armed Forces – All counties in South Carolina
10.	AMIKids Beaufort	<p>A national non-profit organization that provides troubled youth the support they need to become great people.</p> <p><a href="http://www.amikids.org/programs-and-services/programs/amikids-beaufort/story/about">http://www.amikids.org/programs-and-services/programs/amikids-beaufort/story/about</a></p>	Beaufort County
11.	BabyNet – South Carolina’s Early Intervention System	<p>Provides evaluation and assessment for infants and toddlers with developmental delays.</p> <p><a href="https://www.scdhhs.gov/resource/babynet">https://www.scdhhs.gov/resource/babynet</a></p>	Beaufort, Jasper, Hampton and Colleton Counties
12.	Beaufort and Jasper Counties Sheriffs’ Offices	<p>Partners with the South Carolina Department of Public Safety and law enforcement agencies across the Palmetto State for the annual seatbelt campaign observed during the Memorial Day weekend. The effort and enforcement focus on the importance of using a seatbelt while driving or riding in a vehicle. Beaufort County Sheriff's Office Crime Prevention Specialist is responsible for all community and business crime prevention initiatives within the jurisdiction of the Sheriff's Office.</p> <p><a href="http://www.bcs0.net/home.php">http://www.bcs0.net/home.php</a></p>	Beaufort and Jasper Counties
13.	Beaufort County Alcohol and Drug Abuse Department	<p>A component of Beaufort County Government established under South Carolina law to help individuals and families troubled by alcohol, tobacco or other drug related problems with outpatient and prevention programs.</p> <p><a href="http://www.bcgov.net/departments/Community-Services/alcohol-and-drug-abuse/index.php">http://www.bcgov.net/departments/Community-Services/alcohol-and-drug-abuse/index.php</a></p>	Beaufort County
14.	Beaufort County Department of Social Services	<p>Provides adult protective services, child protective services, family independence, food stamps, foster care services, foster home and group home licensing, referrals for child support, emergency financial services (utilities and medicine).</p> <p><a href="https://dss.sc.gov/contact/beaufort/">https://dss.sc.gov/contact/beaufort/</a></p>	Beaufort County

15.	Beaufort County Disabilities and Special Needs	Provides family support services, residential, employment services, day programs, early intervention. <a href="http://www.bcgov.net/departments/Community-Services/disabilities-and-special-needs/index.php">http://www.bcgov.net/departments/Community-Services/disabilities-and-special-needs/index.php</a>	Beaufort County
16.	Beaufort County Early Childhood Coalition & School Readiness Workgroup	This coalition and workgroup build collaborative efforts to assist Beaufort County children to be healthy and ready for success upon entering school. <a href="https://www.beaufortcountysc.gov/human-services/how-to-get-involved.html">https://www.beaufortcountysc.gov/human-services/how-to-get-involved.html</a>	Beaufort County
17.	Beaufort County First Steps	South Carolina First Steps is the state's early childhood education initiative. The program's efforts ensure Beaufort County's children are ready for school success. Includes home visitation strategies, child care quality enhancement strategies and early identification and referral strategies. <a href="https://beaufortfirststeps.com/">https://beaufortfirststeps.com/</a>	Beaufort County
18.	Beaufort County Health Department, SC DHEC Lowcountry Region	Family planning, immunizations, STD testing, TB testing and WIC prenatal resources, and community health promotion. <a href="https://scdhec.gov/health/public-health-departments-clinics">https://scdhec.gov/health/public-health-departments-clinics</a>	Beaufort County
19.	Beaufort County Sheriff's Office	Special Operations Branch offers School Resource Officer's Program, Diversion Programs, Domestic Abuse Prevention Program, Gang Resistance Education and Training, Educational programs for parents, educators and community organizations, and drug awareness training for school-age children. <a href="http://www.bcsso.net/home.php">http://www.bcsso.net/home.php</a>	Beaufort County
20.	Beaufort County Youth Conference	The annual <i>Youth Conference</i> is a one-day educational event planned by teens for their peers. It was developed and delivered by a partnership of Carae's Lowcountry Modeling, the Beaufort County Alcohol and Drug Abuse Department, Department of Social Services, Technical College of the Lowcountry, Beaufort Memorial Hospital, the Boys & Girls Clubs of the Lowcountry, several faith-based organizations and area teenagers. <a href="https://caraesbeaufort.org/beaufort-youth-conference.html">https://caraesbeaufort.org/beaufort-youth-conference.html</a>	Beaufort County
21.	Beaufort Housing Authority	Beaufort Housing Authority – Housing provided to those in need who meet eligibility guidelines. <a href="http://www.beaufortha.com">www.beaufortha.com</a>	Beaufort County
22.	Beaufort Jasper Economic Opportunity Commission	Direct assistance with utilities, emergency heating/cooling, housing rehabilitation, prescription medication assistance, rental assistance, emergency assistance with food, Youth Leadership Program, child and adult care food program, Head Start and Early Head Start. Includes assistance for cancer. <a href="http://www.beaufortjaspereoc.org">www.beaufortjaspereoc.org</a>	Services available to Beaufort and Jasper Counties (Poverty income guidelines)
23.	Beaufort Jasper Hampton Comprehensive Health Services, Inc.	Federally Qualified Health Centers that offer primary care, gynecology, obstetrics, pediatrics, pharmacies, WIC, nutritional consultations, mammography, migrant health programs and Ryan White (HIV/AIDS) medical services. <a href="http://www.bjhchs.org">http://www.bjhchs.org</a>	Eight health centers serve children and adults on a sliding fee scale in Beaufort, Jasper, and

			Hampton Counties
24.	Beaufort Soil and Water Conservation District	Partner with USDA Natural Resources Conservation Service (NRCS), SC Department of Natural Resources, and Beaufort County to conserve, maintain and improve our environment by promoting wise land use practices, technical assistance, providing environmental education programs, and promoting hiking and paddling trails in Beaufort County. Key programs include the Together for Beaufort County Water Quality Committee, storm water education, school and festival outreach programs, and Eco Camp. <a href="http://www.beaufortconservationdistrict.org">http://www.beaufortconservationdistrict.org</a>	Beaufort County
25.	Best Chance Network	The Best Chance Network (BCN) program provides free breast and cervical cancer screenings for South Carolina women who meet program eligibility requirements. The BCN is primarily funded by the Centers for Disease Control and Prevention (CDC), the Prevention and Public Health Funds and state funds allocated by the South Carolina Legislature. Screening services include mammograms, clinical breast exams, pap tests, pelvic exams, human papillomavirus tests, diagnostic testing for women with abnormal screening results, support services including patient navigation and referral for treatment, and community education on breast and cervical cancer. <a href="https://scdhec.gov/health/diseases-conditions/cancer/best-chance-network-women-may-qualify-free-cancer-screenings">https://scdhec.gov/health/diseases-conditions/cancer/best-chance-network-women-may-qualify-free-cancer-screenings</a>	State of South Carolina
26.	Better Choices Better Health	Workshop for adults with ongoing health conditions such as arthritis, chronic lung disease, depression, diabetes, heart disease, high blood pressure. Workshops are 2-1/2 hours and held each week for six weeks. They support practical ways to deal with pain and fatigue; information on nutrition and exercise; help understanding how to live with difficult emotions; learning ways to talk with your doctor and family about your health. <a href="https://uwlowncountry.org/community-directory/name/better-choices-better-health/">https://uwlowncountry.org/community-directory/name/better-choices-better-health/</a>	Beaufort, Jasper, Colleton, and Hampton Counties
27.	Bluffton Self Help	Bluffton Self Help is a South Carolina non-profit charity committed to providing free food, clothing and short-term financial assistance for Bluffton area adults, while supporting them to become more self-reliant. <a href="http://www.blufftonselfhelp.org">http://www.blufftonselfhelp.org</a>	Greater Bluffton area of Beaufort County
28.	BMH Care Anywhere	This Beaufort Memorial Hospital program provides 24/7 online doctor visits with no appointment necessary. The virtual doctor visit is private and secure and offers board-certified providers. <i>BMH Care Anywhere</i> providers can consult, diagnose and prescribe for cold/flu, sore throat, allergies, infection and more for adults and children. A smart phone, tablet or computer are necessary for the virtual visits. <a href="https://bmhcareanywhere.org/landing.htm">https://bmhcareanywhere.org/landing.htm</a>	
29.	Born To Read	Registered 501(C) 3 non-profit charitable organization promoting early literacy in the Lowcountry. New parents are given a gift bag with a book and advice on the importance of reading to their child starting in infancy. If requested by parents, referrals are provided for obtaining a GED, attending English classes for non-English speaking parents, and help in seeking a pediatrician for their family. <a href="http://borntoread.org">http://borntoread.org</a>	Beaufort and Jasper Counties



30.	Bridge to Home Program – Beaufort Memorial Hospital, a Care Transitions Initiative	Provides coordination to ensure continuity of care for patients with defined chronic diseases when discharged from the hospital. Goals are to assist in the transition from hospital to home, provide patient education, medication, and appropriate follow-up care.  <a href="https://www.bmhsc.org/health-and-wellness/education-support/bridge-to-home-program">https://www.bmhsc.org/health-and-wellness/education-support/bridge-to-home-program</a>	Beaufort Memorial Hospital patients with chronic diseases who reside in Beaufort, Jasper or Hampton Counties
31.	Cancer Awareness Foundation / Off Island Thrift Store	Provides financial assistance to cancer patients.  <a href="http://www.offislandthrift.com/">http://www.offislandthrift.com/</a>	Southern Beaufort County including Hilton Head, Bluffton, and Okatie
32.	CancerCare	All cancer diagnoses – Limited financial grants for transportation, homecare, childcare, and pain medications. Also, Linking Arms Program can provide grant for breast cancer patients to help with oral medications and lymphedema supply costs. Assistance is also available for men.  <a href="https://www.cancercare.org/">https://www.cancercare.org/</a>	Nationwide non-profit providing services to all qualifying cancer patients
33.	CancerCare Co-Payment Assistance Foundation	Provides co-payment assistance for pharmaceutical products to insured individuals who are covered by private insurance, employer-sponsored health plan, or have Medicare Part D or Medicare Advantage. Household income must be at or within 400% US Federal Poverty guidelines for people residing and receiving treatment in the United States or its territories. Financial assistance for all types of cancer.  <a href="https://www.cancercare.org/copayfoundation">https://www.cancercare.org/copayfoundation</a>	
34.	Cancer Thrift Store of Beaufort	The Cancer Thrift Store of Beaufort is a non-profit organization that supports those affected by cancer. They provide financial help for medical costs, support, and resources.  <a href="https://www.cancerthriftstore.com/">https://www.cancerthriftstore.com/</a>	Beaufort County cancer patients
35.	Child Abuse Prevention Association (CAPA)	CAPA Parenting classes, parent support group, adolescent pregnancy prevention and school-based education are offered in Beaufort County. Safe Sleep Education and mandated reporter serve Beaufort and Jasper Counties. The Open Arms Children’s Home for abused and neglected children serves Beaufort, Jasper, Colleton, Allendale, and Hampton Counties.  <a href="http://capabeaufort.org">http://capabeaufort.org</a>	Beaufort, Jasper, Hampton, Colleton, and Allendale Counties
36.	Children’s Rehabilitative Services – South Carolina DHEC	Medical evaluation and treatment of children from birth to 17 years for conditions such as bone and joint diseases, hearing loss, cleft lip and palate, seizures, congenital heart conditions, spina bifida, cystic fibrosis, endocrine disorders, hemophilia, sickle cell disorder, developmental delays, kidney disease. This is statewide; must be a SC resident and US citizen.  <a href="https://scdhec.gov/health/child-teen-health/services-children-special-health-care-needs/childrens-rehabilitative">https://scdhec.gov/health/child-teen-health/services-children-special-health-care-needs/childrens-rehabilitative</a>	Beaufort and Jasper Counties
37.	Chronic Disease Fund or Good Days	Co-payment assistance for pharmaceutical products for patients with private insurance or Medicare Part D. Patients who utilize a participating pharmacy can have their out of pocket expenses remitted by the fund directly to the pharmacy. Patients using non-participating pharmacies	Nationwide non-profit providing services to all qualifying patients

		can submit receipts for reimbursement. Breast cancer is covered. <a href="https://www.mygooddays.org/">https://www.mygooddays.org/</a>	
38.	Citizens Opposed to Domestic Abuse (CODA) now called Hopeful Horizons	Provides professional supportive services to victims of intimate partner abuse and their children. Conducts community education programs to confront the societal norms that condone abusive behavior. <a href="https://www.hopefulhorizons.org/our-story">https://www.hopefulhorizons.org/our-story</a>	Beaufort, Colleton, Hampton, and Jasper Counties
39.	Coalition for Aging in Place of Together for Beaufort County	The Coalition for Aging in Place strives to provide mature adults living in Beaufort County with a network of support that offers the practical means and confidence to enjoy life to its fullest in the homes and communities they value. <a href="http://seniorsresourcedirectory.com/community-services/">http://seniorsresourcedirectory.com/community-services/</a>	Beaufort County
40.	Coastal Empire Community Mental Health Center	Provides outpatient mental health assessment, counseling, crisis intervention, psychiatric treatment/therapy, and support services to adults, children, and their families who are affected by serious mental illnesses and significant emotional disorders. <a href="https://scdmh.net/cecmhc/">https://scdmh.net/cecmhc/</a>	Beaufort, Allendale, Colleton, Hampton, and Jasper Counties
41.	Collaborative Organization of Services For Youth	Therapeutic treatment plan coordination for youth service agencies serving Beaufort County. <a href="https://www.bcgov.net/departments/community-services/human-services-alliance/COSY-homepage.php">https://www.bcgov.net/departments/community-services/human-services-alliance/COSY-homepage.php</a>	Beaufort County
42.	Deep Well Project	Emergency assistance with food, rent, water and utility bills, household furnishings for families who suffer catastrophic loss, transportation, home repairs, medicine, clothing, childcare, and school supplies. <a href="http://www.deepwellproject.org">http://www.deepwellproject.org</a>	Anyone in need on Hilton Head Island, Beaufort County
43.	Disabilities Coalition	The mission of the Disabilities Coalition is to enhance the lives of persons with disabilities in Beaufort County by working together to provide, improve or expand needed services and opportunities for them and their families. <a href="http://www.disabilitiescoalition.org/">http://www.disabilitiescoalition.org/</a>	Beaufort County
44.	DragonBoat Beaufort	DragonBoat Beaufort was created by cancer survivors and is available to assist those in Beaufort County who are affected or have been affected by the disease. DragonBoat helps with meal preparation and delivery, transportation to and from clinic appointments, daycare services during appointments, and cleaning services. Financial assistance is available in some cases. <a href="https://www.dragonboat-raceday.com">https://www.dragonboat-raceday.com</a>	Beaufort County
45.	Emergency Shelter after Dark	Call to gain assistance for shelter after dark for individuals who are homeless. <a href="https://211lifeline.org/detail.php?id=15570257">https://211lifeline.org/detail.php?id=15570257</a>	Beaufort County
46.	Family Promise of Beaufort County	Transitional housing for families in a crisis such as job loss, unexpected illness, death in family, house fire, eviction, divorce, relocation, or other challenges. <a href="https://familypromisebeaufortcounty.org/">https://familypromisebeaufortcounty.org/</a>	Beaufort County
47.	Family Services, Inc.	Provides financial management/protection of assets; manages day-to-day financial obligations for individuals who are on a fixed income; promotes home ownership for low and moderate income housing which includes first time homebuyers' workshops, credit analysis, reverse mortgage	State of South Carolina

		counseling, and default counseling; behavioral health services and Employee Assistance Programs. <a href="https://originsc.org/">https://originsc.org/</a> <a href="https://www.guidestar.org/profile/57-0324920">https://www.guidestar.org/profile/57-0324920</a>	
48.	Farmers' Markets	Locally grown produce is offered to residents, to encourage selecting healthy and nutritional foods. Many markets participate in the SNAP and WIC Farmers Market Nutrition program.	Beaufort and Jasper Counties
49.	Farm Worker Health Program	Beaufort Jasper Hampton Comprehensive Health Services Leroy E. Browne Medical Center on St. Helena Island is a federally funded program that provides medical, dental and social services. <a href="https://www.bjhchs.org/farm-worker-program/">https://www.bjhchs.org/farm-worker-program/</a>	Migrant and seasonal farm worker population in the Beaufort, Jasper and Hampton Counties
50.	Florence Crittenton Programs of SC	Residential program for single pregnant women and teens provides medical, educational, and counseling services. <a href="http://florencecrittentonsc.org">http://florencecrittentonsc.org</a>	All single pregnant women and teens from across South Carolina
51.	Franciscan Center (St. Francis Center)	The Franciscan Center is a Diocese of Charleston outreach program to serve the poor and underserved residents. <a href="https://www.facebook.com/pages/category/Nonprofit-Organization/St-Francis-Center-on-St-Helena-Island-SC-174598323252010/">https://www.facebook.com/pages/category/Nonprofit-Organization/St-Francis-Center-on-St-Helena-Island-SC-174598323252010/</a>	Beaufort County
52.	Fresh Start Healing Heart	An organization providing safe housing, immediate needs, case management and support to victims of commercial sexual exploitation and labor trafficking. Works to educate the community on human trafficking through materials, education sessions and fund raising. <a href="http://www.freshstarthealingheart.org">http://www.freshstarthealingheart.org</a>	State of South Carolina
53.	Friends with Wheels	Provides transportation for medical appointments by appointment. <a href="https://uwlowcountry.org/community-directory/name/friends-with-wheels/">https://uwlowcountry.org/community-directory/name/friends-with-wheels/</a>	Hilton Head, Bluffton, occasionally Beaufort, Hardeeville, Okatie, Savannah, Charleston
54.	Good Neighbor Free Medical Clinic of Beaufort	Faith-based organization serving very low-income, uninsured adults to provide medical treatment and visits for health education, prescription assistance and pastoral care. Diagnostic tests, laboratory services and medications prescribed by the Clinic's health care providers are made available through Beaufort Memorial Hospital and pharmaceutical company patient assistance programs. <a href="http://gnfmcbeaufort.org/">http://gnfmcbeaufort.org/</a>	Serves uninsured Beaufort County residents

55.	Greater Bluffton Jasper County Volunteers in Medicine	Medical clinic that provides medical care in a compassionate and professional manner to the uninsured of greater Bluffton and Jasper County. Volunteers in Medicine emphasize the use of retired medical professionals to provide quality healthcare services in two free clinics.	Bluffton in Beaufort County and Jasper County
56.	Gullah Church Nurses Association	Provides basic life support certification, conducts workshops in health education on diabetes, nutrition, HIV/AIDS, hypertension, breast cancer and other health related subjects. <a href="https://uwlowcountry.org/community-directory/name/gullah-church-nurses-association/">https://uwlowcountry.org/community-directory/name/gullah-church-nurses-association/</a>	Beaufort and Jasper Counties (predominately African American churches)
57.	Healing Waters Mission and Wellness Center	Provides spiritual growth and development and life skills on health and safety. Assess and provide for social and health needs of the community with a food and clothes pantry. Provides free HIV counseling and testing. Assists with the free school out lunch program throughout the state. <a href="http://Healingwatersmission.com">http://Healingwatersmission.com</a>	Beaufort County
58.	HealthWell Foundation	The HealthWell Foundation reduces financial barriers to care for underinsured patients with chronic or life-threatening diseases. Offers assistance for the specific condition of breast cancer. <a href="https://www.healthwellfoundation.org/">https://www.healthwellfoundation.org/</a>	Nationwide non-profit providing services to all qualifying patients
59.	Help of Beaufort	Provides emergency assistance, food, clothing and sometimes financial assistance. <a href="http://www.helpofbeaufort.org">http://www.helpofbeaufort.org</a>	Beaufort, Jasper, and Hampton Counties
60.	Hilton Head Regional Habitat for Humanity	Non-profit housing ministry for low to very low income families. Provides a 30-year mortgage at 0% interest for the cost of construction. <a href="http://habitatthi.org">http://habitatthi.org</a>	Hilton Head, Bluffton, Ridgeland, Hardeeville
61.	Hopeful Horizons	24/7 rape crisis hotline, hospital/medical accompaniment, court accompaniment, counseling, forensic interview for alleged cases of child sexual and severe physical abuse. <a href="https://www.hopefulhorizons.org/our-story">https://www.hopefulhorizons.org/our-story</a>	Beaufort, Jasper, Hampton, Colleton, and Allendale Counties
62.	Jasper County Department of Social Services	Provides adult protective services, child protective services, family independence, food stamps, foster care services, foster home and group home licensing, referrals for child support, emergency financial services (utilities and medicine). <a href="https://dss.sc.gov/contact/jasper/">https://dss.sc.gov/contact/jasper/</a>	Jasper County
63.	KidFest	KidFest is a large one-day event held each spring to celebrate Child Abuse Prevention Month and Month of the Military Child. KidFest involves 60+ different community agencies and businesses and provides an opportunity for community families to learn about various services available in the Beaufort area. <a href="https://www.facebook.com/KidFest-Beaufort-588703834537417/">https://www.facebook.com/KidFest-Beaufort-588703834537417/</a> <a href="http://mykidfest.com/">http://mykidfest.com/</a>	Beaufort County
64.	Komen Lowcountry	Komen Lowcountry provides funding programs that support those in the fight to save lives and educate individuals about breast cancer risk factors, the importance of early detection and the resources that are available to help them. <a href="http://komenlowcountry.org/">http://komenlowcountry.org/</a>	Beaufort, Jasper, Hampton, and Colleton Counties

65.	LifeFit Wellness Center – Beaufort Memorial Hospital	Community fitness facility, LifeFit Wellness Center that focuses on disease management and prevention through a case management philosophy. Offers lab screenings and evaluation of risk factors, customized exercise program, group classes, access to a registered dietician and discounted prices for massage therapy and personal training. <a href="https://www.bmhsc.org/health-and-wellness/lifefit-wellness-center/">https://www.bmhsc.org/health-and-wellness/lifefit-wellness-center/</a>	Residents of Beaufort County; scholarships are available
66.	Lions Club – Beaufort	A charitable organization that focuses on the visual needs of community residents. Provides financial assistance for eye glasses for low income local residents. Also provides eye screenings in local private and public schools from nursery through high school as well as at local health fairs. <a href="http://www.beaufortlionsclub.org">http://www.beaufortlionsclub.org</a>	Beaufort
67.	Lowcountry Affordable Housing Coalition	The Lowcountry Affordable Housing Coalition is a group of governmental, non-profit, and private organizations working together to make housing more affordable for Lowcountry residents. <a href="https://www.bcgov.net/departments/Community-Services/human-services-alliance/how-to-get-involved.php">https://www.bcgov.net/departments/Community-Services/human-services-alliance/how-to-get-involved.php</a>	Beaufort, Colleton, Hampton, and Jasper Counties
68.	Lowcountry Area Coalition VITA	Formed with the assistance of the Internal Revenue Service to expand the single largest anti-poverty program offered by the federal government – VITA, the Volunteer Income Tax Assistance program. <a href="https://uwlowcountry.org/lowcountry-area-vita-coalition-helps-with-taxes/">https://uwlowcountry.org/lowcountry-area-vita-coalition-helps-with-taxes/</a>	Beaufort County
69.	Lowcountry Community Action Agency	Provides financial assistance for utility bills, medications, rent, mortgage, food, shelter. <a href="http://www.lowcountrycaa.org">http://www.lowcountrycaa.org</a>	Colleton and Hampton Counties
70.	Lowcountry Council of Governments	Provides caregiver support, information, education and services, offers information and referral assistance to seniors and caregivers, provides insurance counseling assistance and referral for elders. A service coordinator conducts new client intake and assessments for group dining meals, home delivered means, and home care as well as coordination of services for eligible persons. <a href="http://www.lowcountrycog.org/">http://www.lowcountrycog.org/</a>	Beaufort, Jasper, Hampton, Colleton Counties
71.	Lowcountry Habitat for Humanity	Non-profit housing ministry for low to very low income families. Provides a 30-year mortgage at 0% interest for the cost of construction. <a href="https://lowcountryhabitat.org/">https://lowcountryhabitat.org/</a>	Beaufort, Jasper, Hampton, and Colleton Counties
72.	Lowcountry Regional Transportation Authority D.B.A. Palmetto Breeze	The Palmetto Breeze provides a wide variety of public transportation and contract services. The organization was formerly known as the Lowcountry Regional Transit Authority. <a href="https://palmettobreezetransit.com/wp/">https://palmettobreezetransit.com/wp/</a>	Beaufort, Colleton, Hampton, and Jasper Counties
73.	Marine Corps Community Services	Information and referral, substance abuse programs, family counseling, child and spouse abuse reporting and case management. <a href="http://www.mccs-sc.com/index.shtml">http://www.mccs-sc.com/index.shtml</a>	Marine Corp services available to enlisted,

			veterans, and dependents
74.	Meals-on-Wheels	Provides a hot, mid-day meal 5 days per week. <a href="https://lowmow.net/">https://lowmow.net/</a>	Beaufort County
75.	Med-I-Assist Program	A Patient Prescription Assistance Program designed to assist patients who have no prescription insurance coverage and are unable to afford their prescription medication. <a href="http://www.accesshealthlowcountry.org/med-i-assist.html">http://www.accesshealthlowcountry.org/med-i-assist.html</a>	Beaufort and Jasper Counties
76.	Medical University of South Carolina College of Dental Medicine	Offers dental care at adjustable fees based on services provided by Dental Student Clinics, graduate Residency Clinics, and Dental Faculty Practices. <a href="https://muschealth.org/medical-services/dental">https://muschealth.org/medical-services/dental</a>	General Public
77.	Mental Health Access Coalition of Together for Beaufort County	In an effort to increase the availability and accessibility of mental health resources in our community, this group has defined two priorities: transportation and education. <a href="https://www.beaufortcountysc.gov/human-services/how-to-get-involved.html">https://www.beaufortcountysc.gov/human-services/how-to-get-involved.html</a>	Beaufort and Jasper Counties
78.	Mental Health America Beaufort/Jasper – Island House	Operates a psychiatric rehabilitation program which helps adults with severe and persistent illness work on the recovery goals of their choice. Program members work towards enhancing their psychological, social and living skills and moving towards a future of their choice. This is a Medicaid funded program that also provides limited scholarship slots and a private pay option. <a href="https://mhaislandhouse.com/">https://mhaislandhouse.com/</a>	Beaufort and Jasper Counties
79.	Mobile Wellness Unit – Beaufort Memorial Hospital	The Community Health Improvement Program (CHiP) van is a 40-foot healthcare mobile unit that provides free and low cost screenings and some immunizations to neighborhoods, businesses, schools, churches, senior citizen centers, and other organizations. Also provides free skin cancer screenings, free clinical breast exams, and low cost prostate cancer screenings. <a href="https://www.bmhsc.org/health-and-wellness/for-the-community/mobile-wellness-unit">https://www.bmhsc.org/health-and-wellness/for-the-community/mobile-wellness-unit</a>	Beaufort and Jasper Counties
80.	Morris Village Alcohol and Drug Addiction Treatment Center	A state-run facility that provides inpatient substance abuse treatment services to chemically dependent adults struggling with addiction and co-occurring mental health disorders. <a href="https://www.rehabs.com/listings/morris-village-alcohol-and-drug-addiction-treatment-center-3563155374/">https://www.rehabs.com/listings/morris-village-alcohol-and-drug-addiction-treatment-center-3563155374/</a>  <a href="http://www.state.sc.us/dmh/morrisvillage/">http://www.state.sc.us/dmh/morrisvillage/</a>	State of South Carolina
81.	National Alliance on Mental Illness (NAMI)	Free education courses and support groups for individuals with mental illness, and for their families and caregivers. Community outreach programs include free Crisis Intervention Training for law enforcement; free mental health education programs including Parents and Teachers as	Beaufort County

		Allies (for public and private schools); and in Our Own Voice presentations by people who have experienced mental illness. <a href="https://namilowcountry.org/">https://namilowcountry.org/</a>	
82.	Neighborhood Outreach Connection	Focuses on low income families from all major ethnic groups. Identifies distressed neighborhoods and offers assistance and encouragement to struggling individuals and families in low income neighborhoods with education, healthcare, and workforce development. <a href="http://www.noc-sc.org/">http://www.noc-sc.org/</a>	Beaufort County
83.	New Life Center Commission on Alcohol & Other Drug Abuse	Outpatient treatment for addictions, prevention programs, adolescent counseling, red ribbon campaign, employee assistance programs. <a href="https://uwlowcountry.org/community-directory/name/new-life-center-commission-on-alcohol-other-drug-abuse/">https://uwlowcountry.org/community-directory/name/new-life-center-commission-on-alcohol-other-drug-abuse/</a>	Jasper and Hampton Counties, South Carolina and active duty military
84.	Office of Early Childhood, Parenting & Family Literacy	Provides parent education, early childhood services and Parents as Teachers home visitation programs. Parent Information and Resource Centers provide adult literacy, child assessments, interagency collaboration, and case management for parents of young children. <a href="https://uwlowcountry.org/community-directory/name/office-of-early-childhood-parenting-family-literacy/">https://uwlowcountry.org/community-directory/name/office-of-early-childhood-parenting-family-literacy/</a>	Beaufort County
85.	Office of Ocean and Coastal Resource Management – SC DHEC	Environmental engineer handles storm water, waste water and water supply permits. Regulates development in eight coastal counties, dock permits, erosion control devices, and all Atlantic Ocean development. <a href="https://www.scdhec.gov/environment/your-water-coast/ocean-coastal-management-ocrm">https://www.scdhec.gov/environment/your-water-coast/ocean-coastal-management-ocrm</a>	Beaufort, Jasper and Colleton Counties
86.	Partnership for Adult Literacy	Work group focused on increasing enrollment in adult education and literacy programs. <a href="https://www.beaufortcountysc.gov/human-services/how-to-get-involved.html">https://www.beaufortcountysc.gov/human-services/how-to-get-involved.html</a>	Beaufort County
87.	Partnership for Prescription Assistance (PPA)	Partnership for Prescription Assistance offers a single point of access to more than 475 public and private patient assistance programs, including more than 150 programs offered by pharmaceutical companies. <a href="https://www.aafp.org/about/initiatives/prescription-assistance.html">https://www.aafp.org/about/initiatives/prescription-assistance.html</a>	Nationwide non-profit providing services to all qualifying patients
88.	PASOs Family and Community Health Programs	Helps the Latino community and service providers work together for strong and healthy families. This is done through education, support, and grassroots leadership development. <a href="http://www.scpasos.org/low-country/">http://www.scpasos.org/low-country/</a>	Beaufort and Jasper Counties
89.	Patient Access Network (PAN) Foundation	Assists patients who cannot access the treatments they need due to out-of-pocket health care costs including deductibles, co-payments, and co-insurance. Offers assistance for breast cancer. <a href="https://panfoundation.org/index.php/en/">https://panfoundation.org/index.php/en/</a>	Nationwide non-profit providing services to all qualifying patients
90.	Patient Advocate Foundation's Co-Pay Relief Program	Provides direct co-payment assistance for pharmaceutical products to insured patients (including Medicare Part D beneficiaries) who financially and medically qualify. Includes assistance for breast cancer. <a href="https://www.copays.org/">https://www.copays.org/</a>	Nationwide non-profit providing services to all qualifying patients

91.	Penn Center – Program for Academic and Cultural Enrichment (PACE)	The PACE program fosters youth development programs for Sea Island children ages 14 months – 17 years. Instruction focuses on education, social, environmental and cultural development and enrichment. Also provides tutoring for 4 <sup>th</sup> through 8 <sup>th</sup> grade students. <a href="http://www.penncenter.com/community-members">http://www.penncenter.com/community-members</a>	Beaufort County
92.	Physical Activity Resources	Locally owned organizations that offer fitness equipment and programs include Anytime Fitness, City Fit, Earth Fit, the LifeFit Wellness Center, Planet Fitness, the Omni, and the YMCA of Beaufort County. The YMCA also serves families. Walking trails are available at several locations in Beaufort County, including the Spanish Moss Trail, and one on the BMH campus. Recently, a pedestrian area was included on the new McTeer Memorial Bridge that crosses the Intercoastal waterway.	Residents of northern Beaufort County (service area of Beaufort Memorial Hospital)
93.	Pink Fund	The Pink Fund is a public charity that distributes short-term financial aid for basic living expenses on behalf of breast cancer patients who have lost all or a part of their income during active treatment. Payments are made directly to the patient’s creditors. <a href="https://www.pinkfund.org/">https://www.pinkfund.org/</a>	Nationwide non-profit providing services to breast cancer qualifying patients
94.	Pregnancy Center and Clinic of the Low Country	Free and low cost services for prenatal care up to 16 weeks, testing for pregnancy and sexually transmitted diseases, guidance, education, support and parenting classes, infant equipment. <a href="http://www.pregnancycenterhhi.org">http://www.pregnancycenterhhi.org</a>	Beaufort and Jasper Counties
95.	Radiance Women’s Center	The Radiance Women’s Center is a non-profit pregnancy care center offering free pregnancy testing, options counseling, limited ultrasounds, STI testing, referrals, abortion recovery, and pregnancy and parenting classes. <a href="https://radiancewomenscenter.com/">https://radiancewomenscenter.com/</a>	Women of Beaufort and Jasper Counties
96.	St. Francis Center	Assistance with utilities, medicine, emergency home repair, migrant outreach, food assistance. <a href="https://www.facebook.com/pages/category/Nonprofit-Organization/St-Francis-Center-on-St-Helena-Island-SC-174598323252010/">https://www.facebook.com/pages/category/Nonprofit-Organization/St-Francis-Center-on-St-Helena-Island-SC-174598323252010/</a>	Beaufort County
97.	Salvation Army – Emergency Financial Assistance Program	Assists residents with rent/mortgage, lodging, utilities, food and those who have experienced a house fire. <a href="https://uwlowlowcountry.org/community-directory/name/the-salvation-army-the-emergency-financial-assistance-program/">https://uwlowlowcountry.org/community-directory/name/the-salvation-army-the-emergency-financial-assistance-program/</a>	Beaufort, Jasper, Hampton Counties
98.	Second Helpings	Non-profit agency that collects surplus food from grocery and other stores and distributes it the same day to agencies who serve the needy. The Food Network serves Hilton Head, Bluffton and Beaufort. <a href="http://secondhelpingslc.org/">http://secondhelpingslc.org/</a>	Helps agencies serve the Lowcountry of South Carolina
99.	Senior Services of Beaufort County	Home delivered meals, transportation, group dining, homemaker services, and health wellness programs. <a href="http://www.seniorservicesofbeaufort.org">http://www.seniorservicesofbeaufort.org</a>	Beaufort County
100.	Share Our Suzy	Provides a bridge for the financial gap from diagnosis to remission of breast cancer. Funds are available to provide assistance with wigs,	South Carolina



		prosthetics, childcare, gas cards, utility bill assistance, medication assistance and more. <a href="http://www.soslowcountry.org/">http://www.soslowcountry.org/</a>	
101.	Sheldon Township Community Support Partnership	Grassroots coalition formed in 1998 by BMH and SC DHEC Lowcountry region to address educational and economic diversities in the Sheldon Township of northern Beaufort County. This group has received numerous grants which have funded educational resources, leadership development, and health promotion in local area churches. The group was instrumental in facilitating a bond issue leading to a new high school with access to free technical college courses, healthcare for local students, the establishment of a local library branch, and an expansion of a Head Start facility.	Residents of Sheldon Township, northern Beaufort County (Census Tract #1)
102.	Sisters Network Inc.	A national African American breast cancer survivorship organization that provides financial assistance to breast cancer survivors while undergoing radiation or chemotherapy treatment. Assistance includes utility bills, medical bills, rent, and mortgage. <a href="https://www.sistersnetworkinc.org/">https://www.sistersnetworkinc.org/</a>	Nationwide non-profit providing services to all qualifying breast cancer patients
103.	South Carolina 2-1-1	Resource for finding assistance in local communities. 2-1-1 keeps a database of a wide variety of service providers including support groups, community clinics, counselors, shelters, food pantries, programs for seniors, and many more agencies in South Carolina. 2-1-1 can be called anytime, 24 hours a day, 365 days a year to link to vital services in the community. They can also be reached toll free at 1-866-892-9211. The service is free and available in multiple languages. <a href="https://sc211.org/">https://sc211.org/</a> (and) <a href="http://www.211.org/">http://www.211.org/</a>	State of South Carolina
104.	South Carolina Department of Natural Resources	Hunter education program provides training on the responsibility and ethics in the field, as well as firearms safety. Oversees the conservation efforts of the South Carolina state government. <a href="http://www.dnr.sc.gov/">http://www.dnr.sc.gov/</a>	State of South Carolina
105.	South Carolina Office of Victim Assistance	Helps with filing for compensation fund, advocacy and support, referrals, training and technical assistance. Benefits can be paid up to \$15,000 for medical costs, counseling costs, lost wages or loss of support, burial/funeral costs. Crime must have cause physical injury or emotional trauma; victim must not have been engaged in illegal activity <a href="http://sova.sc.gov/">http://sova.sc.gov/</a> <a href="https://scaccess.communityos.org/zf/profile/program/id/79792">https://scaccess.communityos.org/zf/profile/program/id/79792</a>	State of South Carolina
106.	South Carolina Vocational Rehabilitation Department	Vocational assessment and counseling. Helps those with disabilities prepare for, achieve, and maintain employment. <a href="https://scvrd.net/">https://scvrd.net/</a>	State of South Carolina
107.	Spanish Moss Trail	The Spanish Moss Trail is a rails-to-trail greenway project owned by Beaufort County, SC and located in the heart of northern Beaufort County. Beaufort Memorial has partnered with the City of Beaufort to provide the trail for walking, biking, and jogging. The BMH Board dedicated a portion of hospital property to the City as the path provides a health-related community benefit, especially as it will eventually connect the existing wellness trail on the Hospital's main campus to the Spanish Moss Trail. <a href="http://www.spanishmosstrail.com/home">http://www.spanishmosstrail.com/home</a>	General Public

108.	SC Seat Belt Law	<p>“Buckle Up South Carolina.” Under the law, a law enforcement officer has the authority to stop a driver if the officer has a clear and unobstructed view of a driver or occupant of a motor vehicle not wearing a safety belt or not secured in a child restraint system.</p> <p><a href="https://scdps.sc.gov/buckleupsc">https://scdps.sc.gov/buckleupsc</a></p>	State of South Carolina
109.	Stork’s Nest Program	<p>A collaborative project of Zeta Phi Beta Sorority, March of Dimes, and Beaufort Memorial Hospital to improve the health of babies by preventing birth defects and infant mortality through research, community service, education, and advocacy. This incentive program encourages pregnant women to participate in prenatal education and receive regular prenatal care to earn points that can be spent on baby items.</p> <p><a href="https://www.facebook.com/storksnest.beaufort/">https://www.facebook.com/storksnest.beaufort/</a> and <a href="https://mupizeta.com/storks-nest">https://mupizeta.com/storks-nest</a></p>	Beaufort County
110.	United Way of Lowcountry (UWL) Directory & Helpline	<p>An online directory of community resources, including assistance for healthcare and transportation. Works to be the leading force for social change to improve basic needs, education, health and financial stability outcomes. UWL maintains a Helpline to connect citizens with a network of resources and services in the Lowcountry.</p> <p><a href="https://uwlowcountry.org/community-directory/name/united-way-of-the-lowcountry-helpline/">https://uwlowcountry.org/community-directory/name/united-way-of-the-lowcountry-helpline/</a></p>	Beaufort and Jasper Counties
111.	Urgent Care Centers	<p>Private, franchised care centers that offer immediate care services for minor illnesses and injuries and some lab/imaging services. Many operate seven days a week.</p> <p>Beaufort Memorial Hospital operates two Express Care clinics-one in Beaufort and another in Bluffton. These clinics are open daily and provide immediate care for individuals who can’t visit their regular healthcare provider or who may not have a healthcare provider.</p> <p><a href="https://www.bmhsc.org/services/immediate-care-options/express-care/">https://www.bmhsc.org/services/immediate-care-options/express-care/</a></p>	Beaufort and Jasper Counties
112.	Volunteers in Medicine- Hilton Head Island	<p>Free medical clinic that provides free and low cost medical, dental and mental health services to families and individuals who otherwise have no access to quality-driven healthcare. Services include immunizations, physical exams, general medicine, dental care and a wide variety of specialized services.</p> <p><a href="https://vimclinic.org/">https://vimclinic.org/</a></p>	Men, women and children who live or work on Hilton Head Island and Daufuskie Island in Beaufort County. (Also known as VIM Hilton Head)
113.	Water Quality Coalition	<p>This local work group, pulled together by the Beaufort Soil and Water Conservation District, involves numerous stakeholders in water quality issues both governmental and non-governmental who collaborate on problems and solutions. The collaboration has led to developing the Intergovernmental Agreement Plan, the Storm-water Implementation Committee, and the County and Municipality Water Quality Monitoring Committee.</p>	Beaufort County

<https://www.beaufortcountysc.gov/human-services/how-to-get-involved.html>

Source: United Way of the Lowcountry, Beaufort Memorial Hospital, Beaufort County Government, 2019.

BMH’s commitment to being an authentic community-based hospital is reflected through the leadership and support it provides to community initiatives which foster the health and wellness of its service area and the larger community. This commitment includes supporting the local government and local wellness coalitions in their efforts to impact the health and wellness of the community, particularly with respect to social issues which the hospital is not in a position to directly impact. Table 20 lists the needs that were identified through the quantitative and qualitative sections of the CHNA. As required, indication is provided as to whether a need is being “addressed” or “not addressed” by BMH. The third, and last column, inventories the resources currently addressing the need. The numbers in parentheses correspond to the resource inventory provided in Table 19.

**Table 20: Identification of Needs, BMH Involvement, & Resources Addressing Need**

Identified Need	Addressed/Not Addressed by Hospital	Explanation of Addressed/Unaddressed Need (Item Number in Resource Inventory)
Chronic Diseases	Addressing	Beaufort Memorial Hospital CHiP Wellness Van (79) Beaufort Memorial Hospital LifeFit Wellness Services (65) Beaufort Memorial Hospital Bridge to Home Transitional Care Program (30) Better Choices, Better Health (26) BMH Care Anywhere (28) Greater Bluffton & Jasper County Volunteers in Medicine (55) Gullah Church Nurses Association (56) Physical Activity Resources (92) Sheldon Township Community Support Partnership (101)
Obesity	Addressing	Beaufort Memorial Hospital LifeFit Wellness Center (65) Beaufort Memorial Hospital Bridge to Home Transitional Care Program (30) Farmers’ Markets (48) Physical Activity Resources (92)
Access to Medical Care	Addressing	AccessHealth Lowcountry (3) Beaufort County Health Department, SC DHEC Lowcountry Region (18) Note: Provide similar services in Jasper & Hampton Counties Beaufort Jasper Hampton Comprehensive Health Services (23) Beaufort Memorial Hospital CHiP Mobile Wellness Van (79) Beaufort Memorial Hospital Express Care Centers (111) Beaufort Memorial Hospital Transitional Care Program (30) BMH Care Anywhere (28) Good Neighbor Free Medical Clinic of Beaufort (54) Greater Bluffton & Jasper County Volunteers in Medicine Clinics (55) Med-I-Assist Program (75) Palmetto Breeze (72) The Farm Worker Health Program (49) United Way of the Lowcountry Helpline (110) Urgent Care Centers/Express Care Clinics (111) Volunteers in Medicine Hilton Head (112)
Prenatal Care	Addressing	Adequacy of Prenatal Care Coalition (4)

(infant death, teen pregnancy, all pregnancy areas)		<p>Beaufort County Health Department, SC DHEC Lowcountry Region (18)</p> <p>Beaufort Jasper Hampton Comprehensive Health Services, Inc. (23)</p> <p>Beaufort Jasper Economic Opportunity Commission (22)</p> <p>Radiance Women’s Center (95)</p> <p>Child Abuse Prevention Association (35)</p> <p>Florence Crittenton Programs of SC (50)</p> <p>PASOs Family &amp; Community Health Programs (88)</p> <p>Pregnancy Center &amp; Clinic of the Low Country (94)</p> <p>Stork’s Nest Program (109)</p>
Substance Abuse and Mental Health (tobacco, alcohol, drugs)	Addressing (on outpatient basis)	<p>Al-Anon Family Group (6)</p> <p>Alcoholics Anonymous (7)</p> <p>Beaufort County Alcohol and Drug Abuse Department (13)</p> <p>Beaufort County Youth Conference (20)</p> <p>Beaufort Memorial Hospital LifeFit Wellness Services (65)</p> <p>Coastal Empire Community Mental Health Center (40)</p> <p>Collaborative Organization of Services for Youth (41)</p> <p>Morris Village Alcohol and Drug Addiction Treatment Center (80)</p> <p>Mental Health Access Coalition (77)</p> <p>New Life Center Commission on Alcohol &amp; Other Drug Abuse (83)</p> <p>Behavioral Health Branch, Marine Corp Community Services (73)</p>
Violence (child abuse, domestic violence, rape, youth violence, violent behavior)	Not Addressing	<p>Beaufort County Department of Social Services (14)</p> <p>Beaufort County Early Childhood Coalition (16)</p> <p>AMIKids (10)</p> <p>Child Abuse Prevention Association (35)</p> <p>Citizens Opposed to Domestic Abuse now DBA Hopeful Horizons (38)</p> <p>Hope Haven of the Lowcountry now DBA Hopeful Horizons (61)</p> <p>Jasper County Department of Social Services (62)</p> <p>KidFest (63)</p> <p>Marine Corps Community Services, Behavioral Health Branch (73)</p> <p>Penn Center – Early Intervention Program (91)</p>
Injury (firearm, suicide, distracted driving, seat belts, car accidents)	Not Addressing	<p>Beaufort and Jasper Counties Sheriffs’ Offices (12)</p> <p>South Carolina Department of Natural Resources (104)</p> <p>South Carolina Office of Victim Assistance (105)</p> <p>State Seat Belt Law (108)</p>
Poverty (homelessness, unemployment, dropping out of school)	Not Addressing	<p>Beaufort County Early Childhood Coalition (16)</p> <p>Beaufort Housing Authority (21)</p> <p>Beaufort Jasper Economic Opportunity Commission (22)</p> <p>AMIKids (10)</p> <p>Bluffton Self Help Inc. (27)</p> <p>Deep Well Project (42)</p> <p>Emergency Shelter after Dark (45)</p> <p>Family Promise (46)</p> <p>Help of Beaufort (59)</p> <p>Lowcountry Area Coalition –VITA (68)</p> <p>Neighborhood Outreach Connection (82)</p> <p>Partnership for Adult Literacy (86)</p> <p>Second Helpings (98)</p> <p>The Coalition for Aging in Place (39)</p>

Infectious Disease (STDs, HIV/AIDs, Immunizations)	Addressing	Access Network (2) Beaufort County Health Department, SC DHEC Lowcountry Region (18) Beaufort Jasper Hampton Comprehensive Health Services (23) Beaufort Memorial Hospital CHiP Mobile Wellness Van (79) Greater Bluffton Jasper County Volunteers in Medicine Clinics () Gullah Church Nurses Association (56) Med-I-Assist (75) Volunteers In Medicine Hilton Head (114)
Dental (access, not going to the dentist)	Addressing	AccessHealth Lowcountry (3) Beaufort Jasper Hampton Comprehensive Health Services (23) Good Neighbor Free Medical Clinic of Beaufort (54) Greater Bluffton & Jasper County Volunteers in Medicine Clinic (55) Medical University of South Carolina College of Dental Medicine (76) The Farm Worker Health Program (49) Volunteers In Medicine Hilton Head Island (112)

## Sources

Beaufort County, Beaufort County Human Services Alliance, *Together for Beaufort 2006-2009 Beaufort County, South Carolina*

Beaufort Memorial Hospital, June 2019 Physician Staff List

Coastal Carolina Hospital website July 2019

Hilton Head Regional Healthcare, Directory of Physicians and Services.

Lowcountry Council of Governments, Planning Department June 2019

National KIDS COUNT Program, Children’s Trust of South Carolina 2017

Robert Wood Johnson Foundation, State of Obesity. Retrieved from <http://www.stateofobesity.org>.

S.C. Department of Health and Environmental Control, S.C. Public Health Statistics 2010-2017

S.C. Department of Health and Environmental Control, Office of Chronic Disease Epidemiology, June 2019

S.C. Office of Revenue and Fiscal Affairs, Health & Demographics Section 2016-2018

United Health Foundation *America’s Health Rankings 2018*

United Way of the Lowcountry. Retrieved from <https://uwlowcountry.org>.

University of Wisconsin Population Health Institute with support by Robert Wood Johnson Foundation, County Health Rankings and Roadmaps. Retrieved from <http://www.countyhealthrankings.org>.

U.S. Department of Commerce, United States Census Bureau, Population Division 2010-2017

U.S. Department of Commerce, United States Census Bureau, State & County QuickFacts, retrieved from: <http://quickfacts.census.gov>

U.S. Department of Commerce, United States Census Bureau 2008-2017 American Community Survey 5- Year Estimates and 2010-2017 American Community Survey 5-Year Estimates

## CHNA Work Group

Cynthia Coburn-Smith, MS, Manager, Community Health Improvement Program, LifeFit Wellness Services, Beaufort Memorial Hospital

Brenda Hughes, MPH, Lowcountry Public Health Region Community Health Coordinator, South Carolina Department of Health and Environmental Control

Roxanne Davis-Cote, MPH, RD, LD, CNSC, Clinical Nutrition Manager, Food and Nutrition Services, Beaufort Memorial Hospital

Janell Berks, Clerical Specialist, AccessHealth Lowcountry, Beaufort Memorial Hospital

Kimberly Yawn, MS, Director, LifeFit Wellness Services, Beaufort Memorial Hospital

## Contributors

Valerie Benn, RN, MSN, OCVN, Care Transitions Lead Nurse Navigator, Beaufort Memorial Hospital

Yajaira Benet-Uzcategui, CHW, PASOS -Beaufort Jasper Hampton Comprehensive Health Services, Inc.

Ben Boswell, Administrative Manager, Beaufort County Human Services Department, Beaufort County Government

Jackie Brown, BSRN, M.Ed., CBCN, Clinical Nurse Manager, Breast Health Center, Beaufort Memorial Hospital

Kathy Cooper BSN, RN, CNOR, Board of Trustees, Beaufort Memorial Hospital

Dusti Camp, MSHI, Transitional Care Administrative Assistant, Bridge to Home Transitional Care Program, Quality Assurance, Beaufort Memorial Hospital

Jenny Craft, RD, LD, CDE, Clinical Dietitian and Quality Coordinator, Diabetes Care Center, Beaufort Memorial Hospital

Marcia Damude, Imaging Services Coordinator, Breast Health Center, Beaufort Memorial Hospital

Steve Donaldson, LAC, MAC, CACII, Director, Beaufort County Alcohol and Drug Abuse Department

Susan Draves, APRN, Community Health and Primary Care Nurse Practitioner, Community Health Improvement Program, Beaufort Memorial Hospital

Cindy Gibson, Director of Finance, Beaufort Memorial Hospital

Judy Gough, BA, RN, Clinical Director and CEO, Good Neighbor Free Medical Clinic of Beaufort

Col. Quandara Grant, Director, Beaufort County Detention Center

Joyce Hartshorn, RN, MSN, OCN, Clinical Nurse Manager, Oncology, Beaufort Memorial Hospital

Betty Haskins, RN, Gullah Church Nurse, Second Mount Carmel Baptist Church

Ashley Hildreth, MSN, RN, CEN, SANE, Corporate Director of Quality, Beaufort Memorial Hospital

Joanna Hoenshell, BHSA, M.Ed., Clinical Systems Analyst, Information Systems, Beaufort Memorial Hospital

Wanda Jeffcoat, Medication Navigation Specialist, Pharmacy Services, Beaufort Memorial Hospital

Christopher M. Ketchie, MHA, Vice-President of Physician Services, Beaufort Physician Partners, Beaufort Memorial Hospital

Jessica R. Krow, LPN, Clinical Nurse Manager for Beaufort Memorial Physician Partners, Beaufort Memorial Hospital

Ginnie Kozak, MS, MBA, Planning and Transportation Director, Lowcountry Council of Governments

Fred Leyda, Director, Beaufort County Human Services Department, Beaufort County Government

Jonathan Lohr, CSM, Technical Analyst, Digital Health innovations, Beaufort Memorial Hospital

Amanda Martin, LPN, Practice Manager, Express Care/Occupation and Employee Health Clinic, Beaufort Memorial Hospital

Laurie Martin, OTR/L, MSHS, Associate Vice President of Operations, Beaufort Memorial Hospital

Jennifer Massey, MSW, LMSW, ACHP-SW, OSW-C, Manager, Patient Continuum of Care Services, Beaufort Memorial Hospital

Courtney McDermott, Department Director Marketing and Communications, Beaufort Memorial Hospital

Amy Mese, BS, MPH, BHS, RRT-ACCS, NPS, AE-C, CHES, former Clinical Educator, Education Department, Beaufort Memorial Hospital

Mario A. Melendez, Processing Analyst, Health Information Services, Beaufort Memorial Hospital

Jason Meyer, Senior Mobile Wellness Specialist, Community Health Improvement Program, Beaufort Memorial Hospital

LaShandra N. Morgan, MPH, Health Educator, South Carolina Department of Health and Environmental Control, Lowcountry Public Health Region

Hyacinthi Mwangi, MPH, Health Educator, South Carolina Department of Health and Environmental Control, Lowcountry Public Health Region

Shannon Nagel CRCA, CRCR, Senior Programmer/Financial System Analyst, Information Systems, Beaufort Memorial Hospital

Madie Orage-Green, BSW, Program Coordinator, South Carolina Department of Health and Environmental Control, Lowcountry Public Health District

Faith Polkey, MD MPH, FAAP, Chief Clinical Officer, Beaufort Jasper Hampton Comprehensive Health Services, Inc., Regional Director of Medical Education, A. T. Still University School of Osteopathic Medicine in Arizona, Board of Trustees, Beaufort Memorial Hospital

Rhonda Rivers, Registrar/Office Clerk, Infusion Center, Beaufort Memorial Hospital

Deidre Robinson, Digital Marketing Manager, Marketing and Communications, Beaufort Memorial Hospital

Cynthia B. Robino, MBA, GCDF, Work based Learning Coordinator, Jasper County School District

Joshua E. Sellner, MSPH, PhD (c), Lead Chronic Disease and Injury Epidemiologist, SC Department of Health and Environmental Control

Gardenia Simmons-White, RN, Gullah Church Nurse, Faith Memorial Baptist Church

Mary Stutts, RTRM, Mammography Supervisor, Breast Health Center, Beaufort Memorial Hospital

Trimmell S. Simmons, Medical Staff Coordinator, Beaufort Memorial Hospital

Deborah E. Slazyk, MHA, Director, AccessHealth Lowcountry, Beaufort Memorial Hospital

Bradley A. Smith, MPH, CHES, Biomedical Science Teacher, Beaufort High School

Sallie C. Stone, Marketing Content Manager, Marketing and Communications, Beaufort Memorial Hospital

Lisa Taylor, MBA, Manager, Telehealth Services, Beaufort Memorial Hospital

Becky Tibbals, Marketing and Communications Coordinator, Beaufort Memorial Hospital



Chrystie Turner, Vice-President Community Impact, United Way of the Lowcountry, Inc.

Patti Valentini, RNC, Department Director Birthing Center, Beaufort Memorial Hospital

Victoria Viventi, Corporate Health Consultant Well at Work program, Beaufort Memorial Hospital